

Getting the Most Out of the Windows Operating System

A Workshop for San Diego State University Students



© 2002. San Diego State University. All Rights Reserved
Sponsored by Academic Affairs

Where to Find Help When You Need It

Student Computer Help Web Site

The computer help web site for students provides information about the type of help you can get and locations where help is available. To find this information, look to: <http://rohan.sdsu.edu/~students>

Help from the BATS Web Page

BATS (Baseline Access, Training and Support) is a California State University initiative to provide all students, faculty, and staff with "baseline" access to information resources via networks, training in the uses of baseline hardware and software systems, and ongoing professional and technical support for utilization of computer resources at San Diego State University. You can access the BATS Web Page by pointing your browser to:

<http://rohan.sdsu.edu/~bats/>

Help in the Love Library Student Computing Lab

The Student Computing Lab's purpose is to facilitate students in completing assigned class work, as well as provide assistance to students having computer problems relating to the Internet, Netscape, SPSS, File Transfers, PC Operating Systems, Microsoft Office Software and Business Databases.

Location: 2nd floor of the Love Library building in LL-224

Hours: 10:00am – midnight Sunday
7:00am – midnight Monday - Thursday
7:00am - 6:00pm Friday
10:00am - 6:00pm Saturday

Help from the Student Computing Help Desk

Phone: 594-3189

Location: Love Library 220

Hours: 8:00am – 4:30pm Monday
8:00am – 4:30pm Tuesday
8:00am – 7:30pm Wednesday
8:00am – 7:30pm Thursday
8:00am – 4:30pm Friday

E-mail: problems@rohan.sdsu.edu

Table of Contents

What Is WINDOWS?	1
Windows XP vs. Older Versions	1
How Do I Start Windows?	1
The Start Button	1
The Start Menu	2
The Shut Down Option	2
The Help Option	2
The Settings Option	2
The Documents Option	5
The Programs Option	5
Folders	6
Creating Folders	7
Copying and Moving Files/Folders	7
Types of Windows	7
Exploring A Typical Window	8
Shrinking A Window To The Taskbar	8
Working With Multiple Programs At The Same Time	9
Switching From Window To Window	9
Commands	9
Commands Followed By An Ellipse (3 dots)	9
Commands Followed By An Arrowhead	9
Commands With a Check Mark	9
Dimmed Commands	9
WINDOWS EXPLORER VS MY COMPUTER	10
Looking At The Contents Of A Folder	10
Moving Files/Folders	10
Cut and Paste Method	10
Copying Files/Folders	10
Drag and Drop Method	10
Renaming Files/Folders	10
Opening A File	11
Formatting Diskettes	11
SHORTCUTS	11
On the Desktop	11
In the Startup Menu	12
Using The Recycle Bin	12
Recovering Deleted Items	13
Windows XP Keyboard Shortcuts	14

WHAT IS WINDOWS?

When you use your computer, you sit facing some of your computer hardware. Basic hardware consists of the keyboard and mouse, the screen you use to view your work (the monitor), and the Central Processing Unit (CPU), which is the box that houses all the inner workings of the computer.

You use computer applications when you create your spreadsheets, word processing documents and graphics. Some popular applications are Microsoft Excel, Word and PowerPoint.

You cannot directly use computer applications with computer hardware. Instead, you need a translation system between the hardware and the applications. Windows is operating systems that work “behind-the-scenes” to run your computer. The operating system tells the computer what to do when it starts up, and it keeps track of your documents, files, and other software. It also provides the standard user interface component (like menus and the desktop) that you see when you look at your computer screen.

The Windows operating system uses a graphical interface (pictures or icons instead of text) and it allows you to immerse yourself in multitasking (accessing multiple applications and files simultaneously).

Windows XP vs. Older Versions

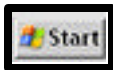
Windows XP has evolved from older versions of Windows (3.0, 3.1, 3.11, 95, 98 Me, NT, 2000). It is much more reliable, it takes advantage of improvements in the CPU, and it supports long file names. It is an excellent choice for most home and office needs.

Windows XP significantly improves the performance and reliability seen with earlier versions of Windows, and it is designed to work with the most powerful hardware and software.

HOW DO I START WINDOWS?

On most systems, Windows will automatically run once the computer is turned on.

THE START BUTTON



One of the ways to get to programs/applications and files is to use the **Start** button. It is located at the lower left corner of the Task Bar.

THE START MENU

The Start menu is one way to access your programs, documents and a variety of other applications. You access the Start Menu by clicking on the **Start** button.

The Shut Down Option

Whenever you need to restart or shut down the computer, you **MUST** do so correctly. Failure to do so will result in an “improper” shut down, and damage to the system may result. Click on **Start**, then click on **Shut Down...** and select the desired option.



The Help Option

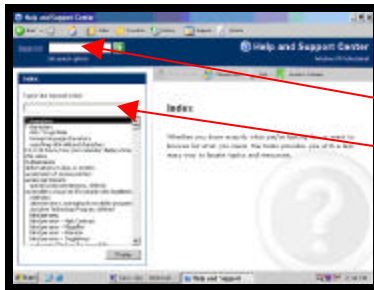
Clicking the **Help** button on the Start menu brings you to the Help screens.

To get started, click on the Index button on the toolbar at the top of the screen. This will open a window that will enable you to enter a search term or to scroll for a search term.



Once the Index window is open:

- Type your keyword in the window, and press **Enter**, or
- Scroll down in the searchable window and press **Enter** when the desired term has been found

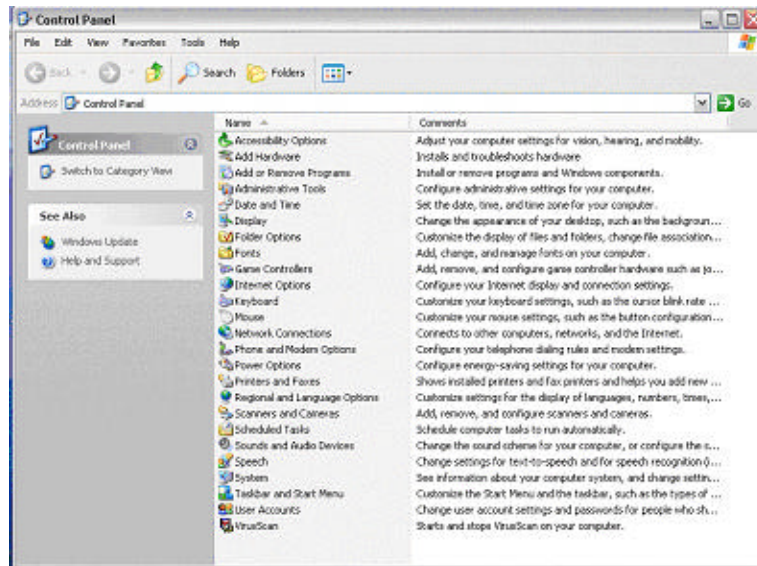


The Help page specific to your search will open in the right pane of the window.



The Settings Option Control Panel

Clicking the **Settings** button on the Start menu allows you access to the Control Panel.



Use the Control Panel when you want to customize your computer's settings.

The System Folder

The system folder is where you look to find out information about your computer. The "General" tab gives you information about the system you are running and information about the computer you are using. The "Hardware Tab - Device Manager" tells you what hardware is connected to your computer.

Customizing The Display

A variety of display related items can be changed by using the Control Panel. Two of the most common items that are customized are the screen saver and the appearance of the Desktop. To customize the screen saver, double click on the settings icon, and then click on the **Screen Saver** tab.

Select the desired screen saver, click **Settings** to customize the screen saver, enter the desired amount of time for the computer to be idle before the screen saver kicks in, click on **Apply**, then click on **OK**. The selected screen saver will now default after the allotted amount of time.

Setting The Time and Date

Once the Date & Time tab is open, all you need to do to change the information is

- Select the month box and select the current month.
- Use the up/down arrows to select the current year.

Highlight the hour/minute/seconds information and use the up/down arrows to select the desired hour/minute/second.

- Use the up/down arrows to select either AM or PM.

Once the information is correct, click on **A**pply then click on **O**K to close the box.

Adding/Removing Programs

To install a new program, put the installation disk or CD-ROM disk in the appropriate drive and select **Add New Programs**. Select the **CD or Floppy** button and Windows will walk you through the process using a wizard.

To uninstall a program, select the desired program from the list, click on the **Change or Remove Programs** button, select the program to be removed and then click on the **Remove** button.

Start-Up Disk

If you don't do anything else, you should take the time to create an emergency Startup Disk. If your computer fails to start normally when you turn it on, you will be able to use this disk to get a basic version of Windows XP loaded on your machine.

Customize the operation of your Taskbar by setting the following options:

Keep the Taskbar On Top Of The Window

Task Bar Settings

You can use the menu to ensure that the taskbar is always visible even when you elect to run a program in the "full screen" mode.

Auto Hide The Taskbar

If you like to see your entire screen while working in an application, you can cause the task bar to hide while you are working on the document, and you

can make it reappear by moving your mouse pointer to the bottom of your screen when you want to use the Taskbar.

Show The Clock

You can show or hide a digital clock display on the far right side of the Taskbar by selecting or de-selecting this option.

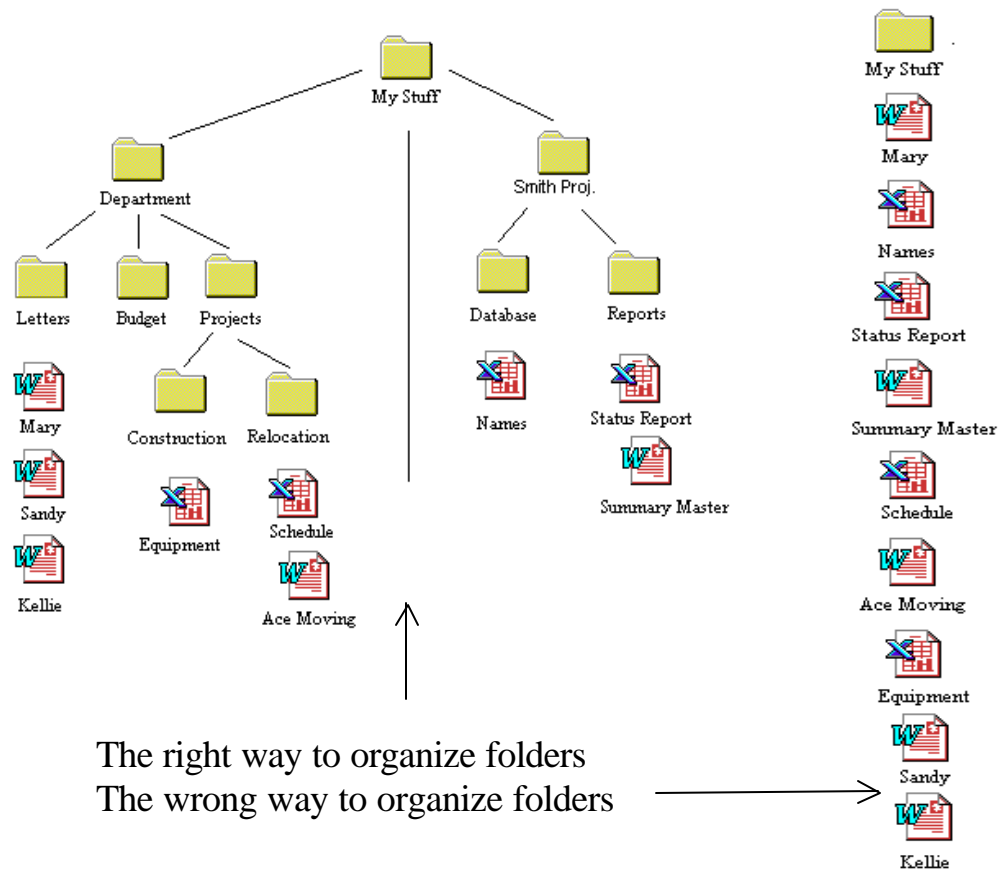
The Documents Option You can find a quick listing of the last 15 documents you have worked on by selecting this option. If you double click the document you want to work with, Windows will automatically open the application and the document for you.

The Programs Option You will probably use this option more often than any of the others. When you select this option, Windows displays a listing of all the available applications and folders on your computer. To launch an application all you need to do is double click the application and Windows will automatically start the application for you.

FOLDERS

If you have worked with DOS or earlier versions of Windows, you are probably familiar with directories and subdirectories. Windows replaced the concepts of directories and subdirectories with the concept of folders. A folder is like a directory in that it holds programs and files. You can also put folders within folders just as you used to put directories within directories (subdirectories).

You will want to use folders to organize your computer and the work you do on the computer.



Creating Folders From the Desktop

Creating a folder is easy. If you are on the Desktop, click the right mouse button and select **New**. Choose **Folder** from the pop up menu and a new folder will be displayed on the Desktop.

The current name of the folder “New Folder” will be highlighted so all you have to do is type in the folder name you prefer. You can use any characters in the name except the following:

: / \ * | < > ? “

From Windows Explorer

Click on the right side of the window using the right mouse button and select **New**. Choose **Folder** from the pop up menu and a new folder will be displayed on the right side of the window.

The current name of the folder “New Folder” will be highlighted so all you have to do is type in the folder name you prefer. You can use any characters in the name except the following:

: / \ * | < > ? “

Copying and Moving Files/Folders

You will probably create folders frequently as you organize your work, and you will need to copy files/folders and move files/folders between folders. When you move or copy a folder you will be moving or copying all of its contents, files and folders, within the moved or copied folder at the same time.

To move or copy an item, click on the item with the right mouse button and hold it down. Drag the item to the new location. To move an item, select the **Move Here** option. To make a copy of the item, select the **Copy Here** option.

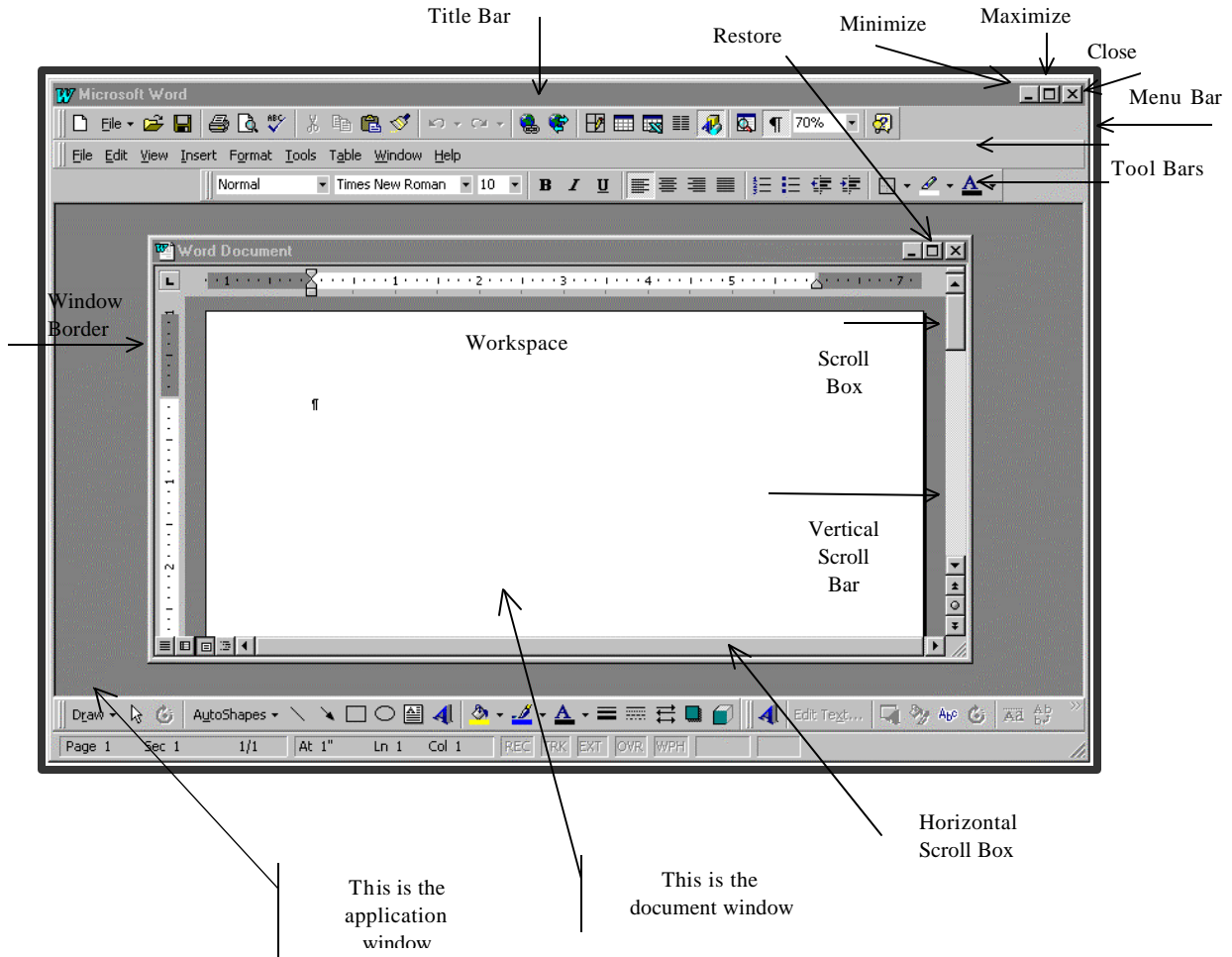
This technique works when you are working on the Desktop, in Windows Explorer and in My Computer.

TYPES OF WINDOWS

There are two types of windows that can appear on your Desktop: the application window and the document window. An application window contains a running program. Application windows have menu bars. A document window may appear inside an application window and may contain documents, files, groups or Document windows do not have menu bars.

Exploring A Typical Window

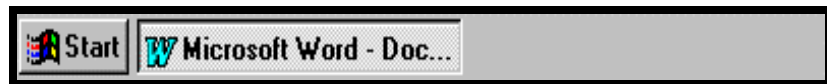
The window has a variety of components. The following diagram illustrates these components:



Shrinking A Window To The Taskbar

To hide your window without closing it, click on the minimize button. The file stays open and running in the background. When you are ready to use it again, you can restore it to the Desktop by clicking on the named item on the taskbar.

The taskbar describes the application and gives the document's name.



Working With Multiple Programs At The Same Time

Windows allows you to have multiple programs open at the same time. It's easy to open the programs, and Windows provides a means for manipulating the programs while they are open.

Once you have one program open, click on the minimize button on the document's window, then open another program. Both (or all) programs will be represented on the taskbar.

Switching From Window To Window

Once you have multiple programs open, you can change from program to program by clicking on the desired program's icon on the Task Bar. As you click on the desired program, that program is launched onto the Desktop.



COMMANDS

When working in an application, you can execute commands by selecting them from the drop down menu that appears when you select an item from the Menu Bar.

Commands Followed By An Ellipse (3 dots)

When you click on the command a dialog box will appear requesting more information before the command is carried out.

Commands Followed By An Arrowhead

This indicates that additional options will follow when the command is selected.

Commands With a Check Mark

The check mark indicates that this command is in effect. This command is controlled by a toggle so that selecting this command again will turn off the function invoked.

Dimmed Commands

Dimmed commands (commands with a lighter intensity) are not currently available. Depending on the type of application you are using, some commands may not be accessible.

WINDOWS EXPLORER VS MY COMPUTER

Windows Explorer can be used in the double pane mode or in the single pane mode, which is called My Computer. You can accomplish the same tasks in either mode. You may find it easier to work in the double pane mode working with visual representations instead of text.

Looking At The Contents Of A Folder

To see what resides in the folder, double click on the folder. If the folder resides on the left pane, you will see the icon change to an open folder, and you will find the contents of the folder in the right pane. If you click on a subfolder in either the right or the left pane, the icon will change to an open folder and the contents of the folder will be displayed in the right pane. The contents of the right pane are always the contents of the folder in the left pane with the open folder icon.

Moving Files/Folders

Drag and Drop Method

Select the item you want to move, click on it with the left mouse button and drag it to the folder (on the same drive) that will be its new location. The item will now reside in the new folder.

Cut and Paste Method

Use the left mouse button to select the item to be moved. Select **Cut** from the context menu. Use the right mouse button to select the folder where the item is to be moved. Select **Paste** from the context menu. The item has now been moved from its old location to the new location. If the item is a folder, all the contents of the folder, including all subfolders and their contents, will be moved to the new location.

Copying Files/Folders

Drag and Drop Method

Select the item you want to move, click on it with the right mouse button and drag it to the folder that will be its new location. Click on **Copy Here** and a copy of the item will reside in the new folder.

Copy and Paste Method

Use the left mouse button to select the item to be copied. Select **Copy** from the context menu. Use the right mouse button to select the folder where the item is to be moved. Select **Paste** from the context menu. The item has now been copied to the new location. If the item is a folder, all the contents of the folder, including all subfolders and their contents, will be copied in the new location.

Renaming

Using the right mouse button, click on the item to be renamed. Click on

Files/Folders **rename** and enter the new name of the item.

Opening A File

To open a file so you can view it or work on it, double click the file's icon. The appropriate application will launch and the file will open for you.

Formatting Diskettes

To format a floppy disk, double click on the **My Computer** icon, insert the disk in the Drive **A**, and click on the **3 1/2 Floppy (A:)** icon. Select **F**ile from the Menu Bar, and then select **F**ormat.

SHORTCUTS

You have the ability to create shortcuts for files, programs, folders, printers and disk drives. You can place the shortcuts anywhere you want them, including on the Desktop.

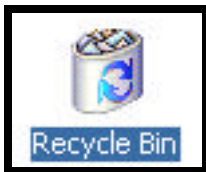
While a shortcut icon may look like an exact copy of a file, program, folder, printer or disk drive, it really is not the same. When you click the original icon, the task is launched. When you click on the shortcut icon, the system looks to the original icon and launches the task from the original icon.

On the Desktop Shortcuts are often placed on the Desktop for easy access. To create a shortcut, double click on **My Computer**, and locate the file, folder, program, printer or disk drive that you want on the desktop. Once the item is found, use the right mouse key and click on the item. Click on the **C**reate **S**hortcut option from the menu that is displayed, and a new shortcut icon will be displayed. At this point, all you need to do is to drag the shortcut icon to the Desktop. You can rename the icon if desired.

In the Startup Menu To add a shortcut to the Startup Menu so that the desired program starts or file is opened at when the computer is first started, click on the **Start** button then click **Settings**. Click on the **Taskbar** option and then select the **Start Menu Programs** tab. Click on the **Add** button, and then click on the **Browse** selection.

Locate the program that you want to add and double click it. Click the **Next** button then double-click the menu where you want the program to appear. Next you will enter the name that will appear on the menu, and when done click **Finish**. Your program is now on the Start Menu and it will automatically run when the computer is turned on.

USING THE RECYCLE BIN



Sometimes you will create documents or folders and later you will find that you no longer need them. It's a good idea to keep your computer free of files and folders that are no longer needed. You can get rid of unneeded files and folders three ways:

Keyboard

The easiest way to delete a file, folder or program is to highlight the item by clicking on it with the right mouse button. Once the item is highlighted, press the **Delete** key on the keyboard. You will be shown a confirmation message. If you are sure that you want to send the item and its contents to the Recycle Bin, click on **Yes** and the item will be deleted.

Right Mouse Button

You can delete a file or folder by clicking on the unwanted item with the right mouse button. Choose **Delete** from the pop up menu. You will be shown the same confirmation message. To send the item and its contents to the Recycle Bin, click on **Yes** and the item will be deleted.

Drag and Drop

You can drag the unwanted item directly to the Recycle Bin. Point at the file or folder with the mouse, click the left mouse button and hold it down, and drag the file or folder to the Recycle Bin on the Desktop.

Recovering Deleted Items Your computer is set to allow a certain amount of your hard drive space to hold “deleted” items. Items will generally remain in the Recycle Bin until you tell the computer to permanently delete the items in the bin. However, if the bin reaches the maximum storage amount, as new items are added to the bin, the oldest items are permanently deleted.

To recover an item from the bin, double click on its icon to see a listing of the files in the bin. Find the file you want to recover and drag it to the Desktop. Once the item is on the Desktop, it is officially undeleted. You can now move it to the desired location.

WINDOWS XP KEYBOARD SHORTCUTS

Use shortcut keys as an alternative to the mouse when working in Windows. You can open, close, and navigate the Start menu, desktop, menus, dialog boxes, and Web pages using keyboard shortcuts. Keyboard shortcuts may also make it easier for you to interact with your computer.

General keyboard shortcuts:

CTRL+C	Copy.
CTRL+X	Cut.
CTRL+V	Paste.
CTRL+Z	Undo.
DELETE	Delete.
SHIFT+DELETE	Delete selected item permanently without placing the item in the Recycle Bin.
CTRL while dragging an item	Copy selected item.
CTRL+SHIFT while dragging an item	Create shortcut to selected item.
F2	Rename selected item.
CTRL+RIGHT ARROW	Move the insertion point to the beginning of the next word.
CTRL+LEFT ARROW	Move the insertion point to the beginning of the previous word.
CTRL+DOWN ARROW	Move the insertion point to the beginning of the next paragraph.
CTRL+UP ARROW	Move the insertion point to the beginning of the previous paragraph.
CTRL+SHIFT with any of the arrow keys	Highlight a block of text.
SHIFT with any of the arrow keys	Select more than one item in a window or on the desktop, or select text within a document.
CTRL+A	Select all.
F3	Search for a file or folder.
ALT+ENTER	View properties for the selected item.
ALT+F4	Close the active item, or quit the active program.
ALT+Enter	Displays the properties of the selected object.
ALT+SPACEBAR	Opens the shortcut menu for the active window.
CTRL+F4	Close the active document in programs that allow you to have multiple documents open simultaneously.

ALT+TAB	Switch between open items.
ALT+ESC	Cycle through items in the order they were opened.
F6	Cycle through screen elements in a window or on the desktop.
F4	Display the Address bar list in My Computer or Windows Explorer.
SHIFT+F10	Display the shortcut menu for the selected item.
ALT+SPACEBAR	Display the System menu for the active window.
CTRL+ESC	Display the Start menu.
ALT+Underlined letter in a menu name	Display the corresponding menu.
Underlined letter in a command name on an open menu	Carry out the corresponding command.
F10	Activate the menu bar in the active program.
RIGHT ARROW	Open the next menu to the right, or open a submenu.
LEFT ARROW	Open the next menu to the left, or close a submenu.
F5	Refresh the active window.
BACKSPACE	View the folder one level up in My Computer or Windows Explorer.
ESC	Cancel the current task.
SHIFT when you insert a CD into the CD-ROM drive	Prevent the CD from automatically playing.

Dialog box keyboard shortcuts:

Press	To
CTRL+TAB	Move forward through tabs.
CTRL+SHIFT+TAB	Move backward through tabs.
TAB	Move forward through options.
SHIFT+TAB	Move backward through options.
ALT+Underlined letter	Carry out the corresponding command or select the corresponding option.
ENTER	Carry out the command for the active option or button.
SPACEBAR	Select or clear the check box if the active option is a check box.
Arrow keys	Select a button if the active option is a group of option buttons.

F1

Display Help.

F4

Display the items in the active list.

BACKSPACE

Open a folder one level up if a folder is selected in the **Save As** or **Open** dialog box.