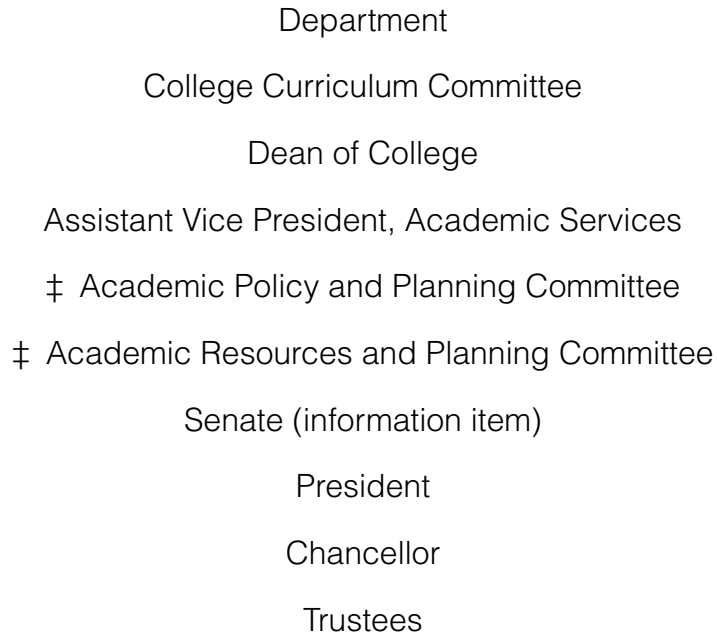


## Flow Chart for Academic Master Plan Proposals New Degrees

(Procedure approved by Academic Policy and Planning Committee, April 24, 1981)



### **NOTE:**

Procedure applies only to request for inclusion of a new degree in the Academic Master Plan. Request for implementation of degree must be submitted separately and follow established university procedures for review of new programs

---

‡Review concurrently.