

# SAN DIEGO ELECTS FIRST NEGRO TO PUBLIC OFFICE

## Inside The Independent

# Independent

Your Hometown Newspaper—Established 1974  
348 W. MARKET, SAN DIEGO 1, CALIF.—232-3841

Thursday, Friday, Sunday—50¢ a month—10¢ a copy  
THURSDAY, NOVEMBER 7, 1963

Count Stars A8  
Ann Landers A12  
Food and Family B-2  
Every Arts B6

## Integration Shown in The Voting

### First Time For Oriental And Negro

By **SHERMAN S. SKETE**

San Diego elected a Negro and an Oriental to hold public office—solid proof that the city stands four-square to becoming an integrated community.

The Rev. George Walker Smith, a moderate and a Negro, was elected by a city-wide vote to the Board of Education. Tom Horn, also a moderate of Oriental ancestry, was elected to the city council.

Smith fought a nip and tuck battle with his opponent, winning by 681 votes.

Tom Horn earned his seat in city council in spectacular fashion.

He was confronted by Joe Stacey who was involved with the Rev. Grantham M. Phelps in a recent hassle over disputed votes in the primary. Although Phelps endorsed Stacey, four days before the elections, it appeared that his help was too little and too late to offset Horn's marshall lead earlier in the month.



**GEORGE SMITH**  
First Negro



**TOM HORN**  
First Oriental

## THE MEN YOU ELECTED

The Rev. George W. Smith, 33, is pastor of the Golden Hill Presbyterian Church.

He is educationally well prepared for his new job, being the holder of two degrees and was at one time a teacher himself. He is married and the father of three children. Active in civic pursuits, he has served on various commissions.

Tom Horn, 36, is vice president of the David Produce Company.

He is a self-made man and filled the breach in supporting his family when his father died in his early teens. Both he and his wife are active in communal affairs. They have four children. Horn is termed progressive in outlook.



DISPLAYING A TRIUMPHANT "V" for Victory sign, Mayor-Elect Frank Cannon is almost smothered by the press of admirers who accompanied him to the Registrar's Office.

Special reports on SHERMAN S. SKETE

At the time the picture was taken, a hand had been set which forecast a favorable landslide vote. Cannon has long represented the Southeast San Diego area on the city council.

He has twice served as vice mayor, therefore will not have to spend much time "breaking in" to do the top civic job of the city.—Staff Photo by Sherman S. Skeete

# CORE Dickers for Gas Company Jobs

## Present Proposals To Utility Brown Seeks 7 Per Cent Across Board

After emerging from CORE's third meeting with the San Diego Gas and Electric Company, San Diego CORE chairman Harold Brown said that a fiercer match deliberation and thought the following proposals would be presented were very reasonable for any company professing to be an equal opportunity employer. The company is now considering the demands that:

- A total number of Negro employees on any level above janitor shall be 210 out of a total work force of 3,000. (A minimum of 3 per cent of the total work force based on the 2 per cent Negro population of San Diego.)

- In order to enhance the reputation of Negro applicants a listing of job openings shall be given to San Diego CORE.

- In order to make upgrading possible, provisions for in-company training on all levels of employment for

(Continued on Page 2)

## Ramblings of a Scribe

By **RUTH GREEN**

A tumultuous wind is rising in the southeast community and within its whirlpool are leaves of discontent. . . . All kinds of rumors are afloat but the ones that are most disturbing to us are the accusations that one of our up-and-coming leaders, and, as a result, left his followers standing at the gate, high, dry and wondering, while he floundered to that lofty perch of a politically glorified martyr.

That a few self-appointed leaders or spokesmen for the race have impaired the political and economic future of the community by their backdoor manipulations. . . . That a real plum was dangled when they bit.

What that who they agreed was that they were agreed should have this juicy little tid-bit was not who the community wanted. So go the rumors. . . . The time has come when this kind of behavior will no longer

(Continued on Page 2)

## Socialist Speaks Here on Nov. 19

Cifton D. Berry, Socialist Workers Party candidate for Councilman-at-Large for the 13th borough of New York City, will speak in San Diego on Thursday, Nov. 19, 8 p.m., at the Elba Hall, 6 Easley Street.

Daberry, the only Negro candidate in that election, will speak on: "The Negro Revolution—Which Way to Freedom Now, Integration or Separation?" and the prospects for the Freedom Now Party in 1964.

Daberry is 33 years old, a veteran trade unionist, a member of the Negro-American Labor Council and long active in political affairs. He was a participant in the March on Washington.

The meeting is being held under the auspices of the San Diego Labor Forum.

The Socialist Workers Party is a splinter group of socialists, a political code set down by Leon Trotsky, Trotsky was assassinated in Mexico by Communists in 1940. He was driven from Russia where he was once a high Communist.

Trotsky never disavowed Communism but attracted a following more radical than the Communists that held sway.

CIRCUATION of this issue is over **200,000**

## Schooling Hot Issue To Collins

### Negro Dentist Faces Problems Of State Board

Problems of students not going on to college are one of the primary concerns of Dr. Daniel A. Collins, 47, newly appointed member of the State Board of Education, according to Leonard Kreidl.

The San Francisco Negro dentist hasn't much to say at this time about specific problems facing the Board, but out of 19 years of part-time full-time teaching for the University of California he has education ideas of his own on.

However, Dr. Collins feels this experience has done less to prepare him for his new responsibilities than being the parent of four boys and bringing them along through public and private schools. Two of them, 21 and 20 years old, are in the College of Marin, a 16-year-old is a junior in high school, and the youngest, 12, is (Continued on Page 2)



Mrs. Jose Torres, wife of our popular Mexican musician of Logan Heights, lost her mother last Tuesday. Mrs. Maria Amara, who was sixty one years old, passed away at the dykebreak of her birthday in Los Angeles.

On Halloween night, one ingenious political campaigner put Tom Horn's and Rev. George Smith's cards in each of eighty five bags of all kinds, apples or raisins and handed them to the little doorbell ringers. A good political trick on the trick-octoberers.

Hundreds of new laws are passed by our state legislature each year, but hardly any of the real estate tax payers of the real estate tax payers over \$50,000 in damage to homes, apartments, and schools is caused by vandals.

Once in a blue moon some "congress" are caught and it winds up with the state-ment, they were released to the custody of their parents. On the other hand, shoplifting, however minor, can be made a felony. If it's the second offense, property owners should lobby for stiffer penalties for vandalism.

Hundreds of San Diego Mexican-Americans who met Congressman Henry Gonzalez (D-Texas) during his visit here last year, must have thrillingly smiled when they read about his having eulogized another Congressman for publicly using the old Communistism smear against Hank Gonzalez in a 1960 campaign for the United States House of Representatives.

(Continued on Page 2)

# 'EQUAL RIGHTS' TALK TOPIC

"You don't legislate people's attitudes. You only control their behavior," remarked Mrs. Jonas Salk during a recent talk at the Sabbath Service of Temple Seled.

She was speaking on the subject of "My Experience on the Fair Employment Practices Commission."

Mrs. Salk is the chairman of the sub-committee on Housing for the Citizens' Inter-Racial Commission of San Diego.

Her experience is said to be profound. Summa Cum Laude with a major in psychology and of the New York School of Social Work (1933). Her experience includes being a member and then chairman of the Pittsburgh Mayor's commission on Human Relations from 1955 to 1964. She has served on the

(Continued on Page 2)



**CIFTON DABERRY**

The meeting is being held under the auspices of the San Diego Labor Forum.

The Socialist Workers Party is a splinter group of socialists, a political code set down by Leon Trotsky, Trotsky was assassinated in Mexico by Communists in 1940. He was driven from Russia where he was once a high Communist.

Trotsky never disavowed Communism but attracted a following more radical than the Communists that held sway.

CIRCUATION of this issue is over **200,000**

CIRCUATION of this issue is over **200,000**



A DISTINGUISHED GROUP of local realtors met with Floyd Covington (at left seated), representative of the Federal Housing Administration who acts as inter-group relations advisor of the West Coast Area, during a luncheon at the Captain Kidd Club on Point Loma. Problems were aired and

valuable suggestions resulted from the meeting in which the following participated. Seated: Covington, John Reppin, James McCann, Clarence Rucker, T. A. Logan and Dr. Malcolm Williams. —Staff Photo by Sherman S. Skeele.



MISS BEVERLY CARTWRIGHT takes a loyalty competitive examination and will work at each from State Assemblyman James R. the office located at 1350 Front street Mills and thereby becomes the first Negro stenographer hired by the San Diego Branch of F.P.C. She successfully passed a

**S.D. Elects Negro**

...ending a mandate to serve is...  
...must get additional funds to...  
...SMITH TOLD the Inde-...  
...today:

HOA WAS unavailable for...  
...to my fellow San Diegans for...  
...placed in me. As I have al-...  
...ways thought that our ob-...  
...national system is second to...  
...none. My happiness on re-...  
...Their election is said to ex-...  
...empirly democracy at work.

**EQUAL RIGHTS**

(Continued from Page 1)  
"These laws, unlike what many mistakenly be-  
lieve, do not intend to force integration. They are not  
intended to be punitive. They point to fair and equal  
treatment in employment, education and housing.  
Public accommodation laws are all intended primarily  
to utilize education, persuasion, mediation and concili-  
ation before any enforcement machinery is ever  
brought into play. These laws do not, in any way,  
interfere with business standards. The law (what-  
ever it is) is not intended to bring about integration.  
It is intended only to provide equal opportunity. If  
people want to integrate that is their business."  
Mrs. Salik's talk was well received. It was spon-  
sored by the Religious Action Committee of Temple  
Sole.

**Ramblings**

(Continued from Page 1)  
go unchallenged by a people  
who have for too long suffered  
because of it. We on the side-  
lines can safely quote the Rev.  
Martin Luther King, when he  
cries out, "How long, how long  
will my people be in darkness?"  
We ask you, in the southeast  
section of our city, how long  
will we allow ourselves to be  
exploited?  
We had hopes that we were  
entering out of political dark-  
ness, with some degree of pur-  
pose and respectability. Sadly  
these hopes have been dimmed  
this past week. We still go  
a-begging for a leader...one  
with pride, courage and integ-  
rity...we still believe that gov-  
ernment for the people and by  
the people should not perish  
from the earth.

**School Issue**

(Continued from Page 1)  
in elementary school.  
Dr. Collins is especially in-  
terested in the student who  
does not go on to college.  
"Since most youngsters do  
not go on to higher education,"  
he said, "I think the public  
schools' efforts to prepare stu-  
dents for life should be pretty  
complete at the elementary and  
secondary levels. I don't believe  
we can leave any major part  
of such preparation to the  
colleges."  
Accomplishing this end, ac-  
cording to the new Board mem-  
ber, requires a broad scope of  
instruction at the lower levels  
and high-quality teaching.  
"That means elementary and  
secondary schools can't be  
geared to turn out college stu-  
dents exclusively," he ex-  
plained. "Provisions have to be  
made for the youngsters who  
will have to begin making their  
own way right after high school  
graduation."  
Dr. Collins feels that the  
quality of teaching is vital  
Out of the many problems  
facing public education today,  
Dr. Collins shows the most in-  
terest and intense interest in  
the education of culturally dis-  
advantaged children. "This fol-  
lows naturally from his back-  
ground of a CIVILITY for the  
Negro minority, including being  
the founder and a current offi-  
cer of the San Francisco Urban  
League.  
He sees the existence of cul-  
turally deprived children as  
"everybody's problem." He be-  
lieves the United States can  
in effect to have 20 million  
Negroes and lesser numbers of  
Oriental, Mexican-American  
and other minorities as poorly-  
educated, indifferently-produc-  
ive, second-class citizens when  
its ideals and landeship are  
under attack throughout the  
world.  
Pointing out that Negroes  
are not superhuman, Dr. Col-  
lins urged the necessity of giv-  
ing them help in erasing the  
deficit.  
"I, while Americans deny  
the minorities this help, they  
deny the ideals upon which our  
democracy is based. I think  
they must either scrap those  
ideals or apply them equally to  
all Americans."



PARIS — France is one of  
several countries that is ex-  
pected to pledge funds for the  
support of India.  
Derivative of any firm of sales-  
men, showing the name of the Bel-  
gian firm, Belgium, and the ad-  
dress of the customer, or promote  
sales. The BBB does not en-  
dorse any firm, product or serv-  
ice.  
Slaney O. Wells

Est. 1929  
**QUALITY  
UPHOLSTERY &  
DRAPERY CO.**  
For Free Consultation, Phone  
**AT 1-6671**  
3501 Adams Ave.  
Conty-Vide Service  
Inc. (Incl. in  
Bank of America  
Financing)

**School Issue**

(Continued from Page 1)  
Dr. Collins is especially in-  
terested in the student who  
does not go on to college.  
"Since most youngsters do  
not go on to higher education,"  
he said, "I think the public  
schools' efforts to prepare stu-  
dents for life should be pretty  
complete at the elementary and  
secondary levels. I don't believe  
we can leave any major part  
of such preparation to the  
colleges."  
Accomplishing this end, ac-  
cording to the new Board mem-  
ber, requires a broad scope of  
instruction at the lower levels  
and high-quality teaching.  
"That means elementary and  
secondary schools can't be  
geared to turn out college stu-  
dents exclusively," he ex-  
plained. "Provisions have to be  
made for the youngsters who  
will have to begin making their  
own way right after high school  
graduation."  
Dr. Collins feels that the  
quality of teaching is vital  
Out of the many problems  
facing public education today,  
Dr. Collins shows the most in-  
terest and intense interest in  
the education of culturally dis-  
advantaged children. "This fol-  
lows naturally from his back-  
ground of a CIVILITY for the  
Negro minority, including being  
the founder and a current offi-  
cer of the San Francisco Urban  
League.  
He sees the existence of cul-  
turally deprived children as  
"everybody's problem." He be-  
lieves the United States can  
in effect to have 20 million  
Negroes and lesser numbers of  
Oriental, Mexican-American  
and other minorities as poorly-  
educated, indifferently-produc-  
ive, second-class citizens when  
its ideals and landeship are  
under attack throughout the  
world.  
Pointing out that Negroes  
are not superhuman, Dr. Col-  
lins urged the necessity of giv-  
ing them help in erasing the  
deficit.  
"I, while Americans deny  
the minorities this help, they  
deny the ideals upon which our  
democracy is based. I think  
they must either scrap those  
ideals or apply them equally to  
all Americans."

**Homecoming Set Friday**

The 77th Anniversary and  
Homecoming 1963 will be held  
tomorrow at San Diego HI when  
alumni will commemorate and  
be entertained by a series of  
events.  
Classes for the years 1916,  
1923, 1928 and 1963 will be spe-  
cially honored.  
On the day's agenda are the  
following features:  
Assembly — Russ Auditorium  
1:00 to 2:30 p.m.  
Reception — School Library  
3:00 to 5:00 p.m.  
Dinner and Banquet  
6:00 to 7:30 p.m.  
Dance — Caribbean Room  
Cortez  
8:30 to 1:30 a.m.  
Husbands and wives of alu-  
mi are invited to attend as ex-  
tra guests. All graduates of San Diego High  
School.

**Big Count**

A grand total of 707,600,999  
vehicles had passed over the  
San Francisco-Oakland Bay  
Bridge as of March 31, 1963,  
reports the National Auto-  
mobile Club.

**Attention  
RETIRED**

Offering the Latest  
in Retirement Living  
**MARYLAND  
HOTEL**  
6th Ave. & F St., Downtown  
SAN DIEGO  
Set Our Remarkable  
Hotel Newly Restored  
• 100 furnished rooms  
• Full breakfast  
• Breakfast & Dinner served  
• Complete lounge, recreation  
area with shuffleboard, Min-  
i-ature, pool, billiard, TV  
• Gaily active, planned by  
music, drama, literary groups,  
social hours, movies, dances,  
flats, get-togethers, recep-  
tions, card parties and much  
more.  
• Convenient location—just two  
blocks from main downtown  
dial center, church and library.  
• A full, complete restaurant  
with year 'round bar.  
ALL FOR ONE LOW  
MONTHLY RATE. NO  
ENTRY FEES OR LEASES.  
MONTHLY RATES FROM  
\$111 TO \$186

**Did You Hear**  
(Continued from Page 1)  
Billie table. In Harvard cer-  
tain Mexican mushroom de-  
rivatives, or their synthetic,  
are called "hallucinogens" and  
stead of plain old dope and  
their use is a 11ed "inner  
mind experimentation" or scien-  
tific experimentation. They  
must have been loaded with  
mushrooms; both meanings.  
What with three or four  
in 11-millionaires, planning  
massive "low-cost" rental  
projects here with money 80  
per cent to 100 per cent gur-  
anteed by F.H.A. which, in  
turn, is an instrument of the  
Federal Government backed  
by us, the taxpayers. It is  
evident that ruin is in store  
for thousands of 1 c o m e -  
property owners who are al-  
ready confronted with veeah-  
cle of from 12 to 37 per cent.

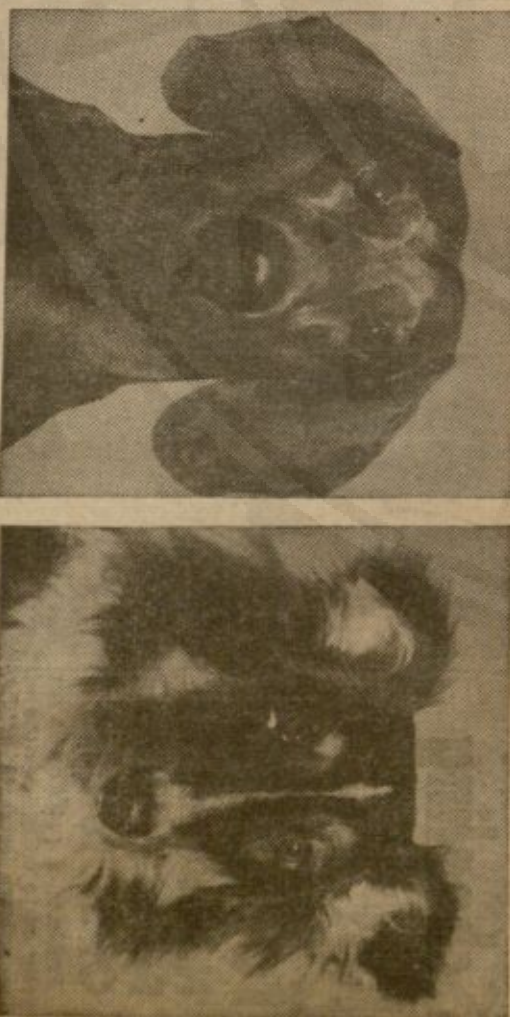
**TOP SIRLOIN STEAK 1.69**  
N.Y. Cut Steak ..... 1.59  
Home Steaks ..... 1.49  
Pork Chops ..... 1.39  
Hamburger Steak ..... 1.29  
Filet of Sea Bass ..... 1.19  
Served with relish, salt, and  
bread, with relish, salt, and  
bread.

**TRAVOLATOR**  
Coffee Shop 6th & Ash  
6:30 a.m. to 6:45 p.m.  
Mon. thru Fri.

**What is it...**



is always dependable...



keeps you lots of company...



and costs so little to keep?

stays alert while you sleep...



Mail's second-best friend, of course!  
Pacific Telephone  
MAIL IS THE MIDDLE MAN WITH SERVICE

**GET IN ON THE FUN! EVERYONE'S  
RIDING TRANSIT BUSES AND PLAYING  
\$2500.00  
"MYSTERY HOUSE" CONTEST**

**It's on now, runs through Friday, Dec. 13  
IT'S FUN! IT'S A CHALLENGE NO  
PURCHASE NECESSARY TO ENTER!  
WHAT IS THE "MYSTERY HOUSE" CONTEST?**

Somewhere on a regularly scheduled San Diego Transit route a house has been secretly picked to be the "Mystery House". All you have to do is figure out its location by the clues posted daily, Monday-Friday each week inside all Transit buses. Mail your guesses on postcard to KCBO Radio, San Diego.

**HERE ARE THE SIMPLE RULES... READ THEM CAREFULLY**

1. It's easy to enter. San Diego Transit's \$2,500 Mystery House Contest. Simply send in a postcard containing the house number and street name of the house you believe to be the \$2,500 Mystery House. Be sure to print your name and address in the upper left hand corner of the card so that we may contact you in the event you are the winner.
2. ONLY ONE ENTRY TO THE CONTEST PER PERSON. You may enter with but only **MUST BE ON A POSTCARD AND P.O. Box 1271, San Diego, California.**
3. Mail your entry to Mystery House Contest, KCBO Radio, San Diego or to San Diego Transit, P.O. Box 1271, San Diego, California.
4. At the end of six weeks, the entries will be judged. The postcard bearing the correct house number and street address of the Mystery House and the secret postcard will be the winner.
5. All entries must be postmarked not later than midnight, December 13, 1963.
6. If no one correctly identifies the house number and street address of the Mystery House, the contestants submitting an entry combining the nearest house number and street address to be final.
7. In the event of a tie, the cash award will be equally divided. All decisions of the judges will be final.
8. The winner will be notified as soon as the judging of the entries is completed. All entries become the property of San Diego Transit.
9. A 3 p.m. radio station KCBO (1170) will give out all the clues to date.
10. Anyone, with the exception of employees of San Diego Transit, San Diego and Coronado Ferry Company, KCBO Radio, Station, Showman's, Mystery House Contest, and immediate families, can enter San Diego's Transit's \$2,500 "MYSTERY HOUSE CONTEST".

**AND WONDERFUL WEEKLY PRIZES FROM KCBO RADIO**

Mail your entries to KCBO Radio, San Diego. Every week for six weeks five wonderful prizes will be given to five entries drawn from those mailed to KCBO each week. You may win a \$75 Helber watch, a \$40 transistor radio, a Gold KCBO Sweater, a record album, dinner for two or a pen and pencil set. Listen to KCBO for complete details of the contest every day. Every Sunday afternoon from 1:30 p.m. to 3 p.m. KCBO (1170) will read all the clues to date.

**REMEMBER... THE CLUES TO THE \$2500.00 "MYSTERY HOUSE" CONTEST ARE INSIDE EVERY SAN DIEGO TRANSIT BUS!**

**Wendy Ward of Ward**

make the "dream you" come true... join  
**WENDY WARD CHARM CENTER**  
Enroll at your Ward's store today.  
The job? A trifle! Just a thrifty \$7.50

**TOTAL YOU:** Attitudes of beauty and charm  
**YOUR VOICE:** Its beauty tone, conversation  
**GIRL TALK:** Art of being feminine, dating  
**MAKEUP:** Glamour look, good taste

**Classes Begin Soon!**

**MISSION VALLEY**  
Sat., Nov. 9 &  
Sun., Nov. 12

**NATIONAL CITY**  
Wednesday, Nov. 13

**GROSSMONT**  
Saturday, Nov. 9

Register now for these or **MISS PAT CARVILLE**  
future classes. Come in or **Wendy Ward**  
phone for details. **Tem Consistent**

**SHOP MONDAY THRU FRIDAY  
EVENINGS TIL 9PM.**

# Walker Scotty values

DOWNTOWN



COLLEGE GROVE

KEARNY MESA

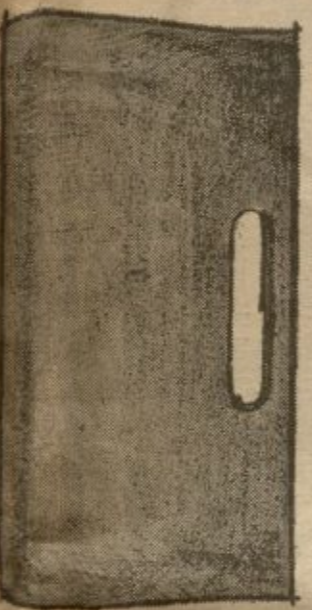
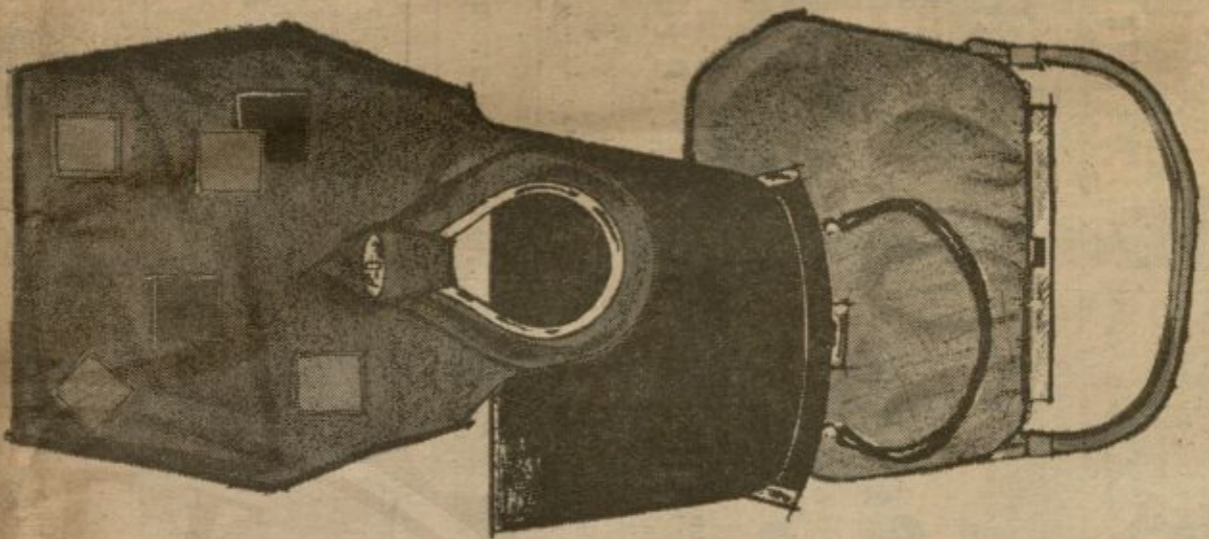
## HANDBAG HARVEST

values for fashion conscious women

# \$3\*

Complete your fashion picture with this assortment of bags . . . and at such a low, low price! In this group there are clutches, totes, dressy styles and casuals. All are in top fashion colors . . . Fawn, Espresso, Black, Brown and combinations . . . plastic calfs and patents, and novelty fabrics . . . some with inside zippers . . . hurry for the best selection!

\*plus 10% Fed. exc. tax  
handbags . . . downtown, college grove and kearny mesa only



## PRIZED PANTTIES

3 fabrics . . . all especially priced

HIGH QUALITY,  
NON-RUN,  
QUICK-DRYING  
NYLON TRICOT  
BRIEF

**6 F \$4**  
**0 R**

COOL NON-RUN  
ACETATE  
BRIEF

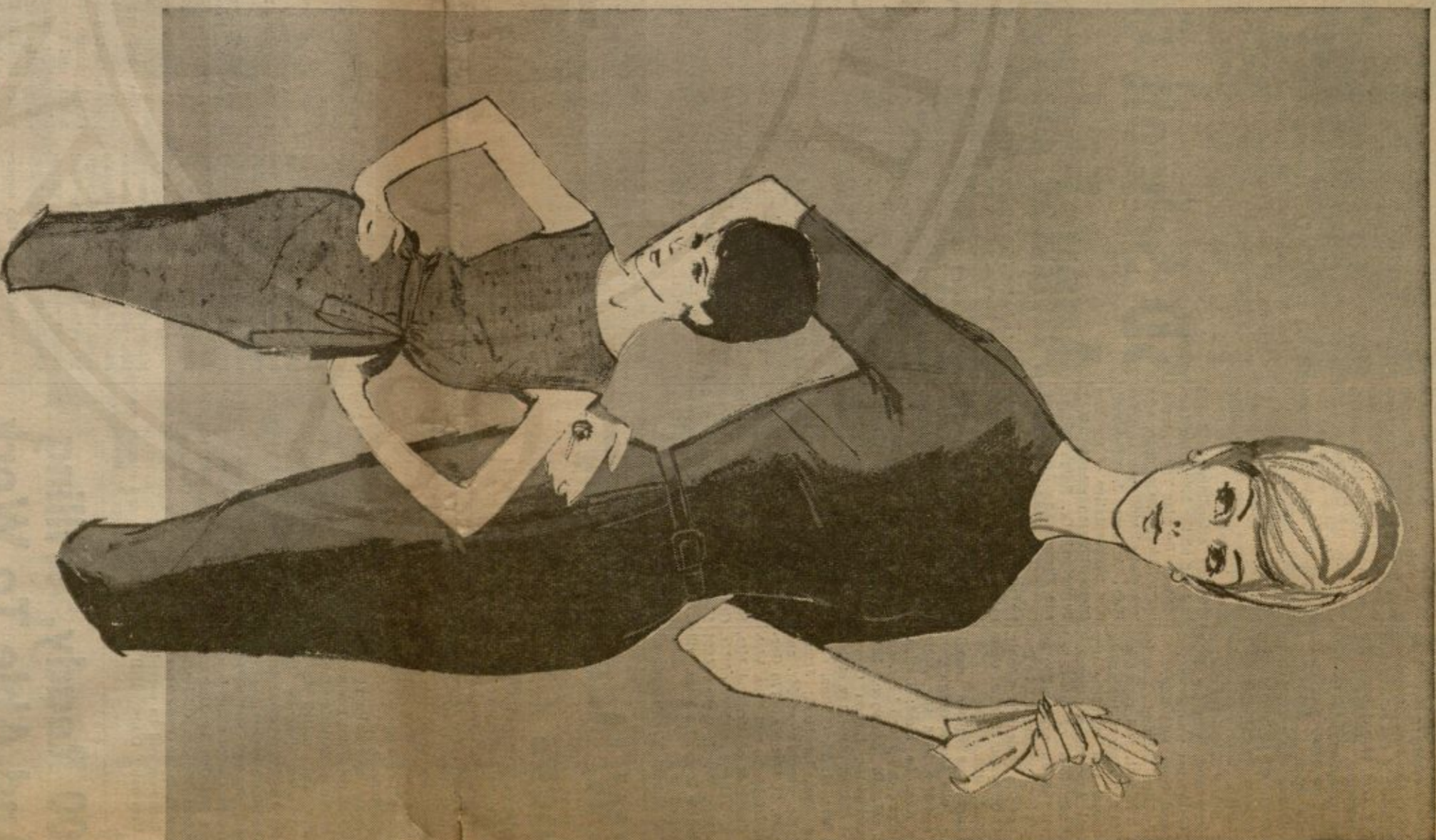
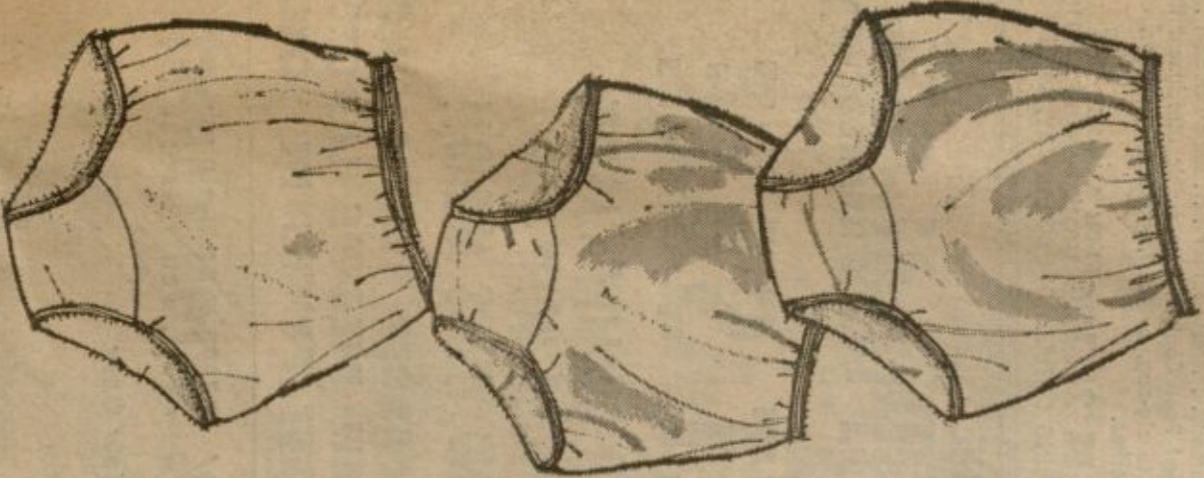
**6 F 2.50**  
**0 R**

COOL SOFT  
ABSORBENT  
COTTON BRIEF

**6 F 3.50**  
**0 R**

White only in sizes 5, 6, 7 . . . at this special price.

phone and mail orders accepted . . . 233-8282  
budget lingerie . . . downtown, college grove and kearny mesa only



## FASHION FINDS

# 888

A tempting new collection of fine sheer wool dresses in the season's best silhouettes, fashions that look twice their very special little price! Shown the basic sheath in red, black or blue, 12-20 sizes . . . and the slim jumper of Crepe Suzette in black, gold, red or blue, 7-15 sizes. Other styles in Misses, Junior and Half sizes . . . but not every style in each size or color.

phone and mail orders accepted . . . 233-8282  
budget dresses . . . downtown, college grove and kearny mesa only

FASHION DOESN'T COST  
A FORTUNE AT.....

# Walker Scott



DOWNTOWN  
COLLEGE GROVE  
LA JOLLA  
KEARNY MESA

SHOP Downtown Mondays and Fridays 9:30-9, other days 9:30-5:30; College Grove Mondays thru Fridays 10-9, Saturdays, 10-6; La Jolla Fridays 9:30-9, other days 9:30-5:30; Kearny Mesa Fridays only 10-9, other days 10-5:30. \$10 MONTHLY BUY'S \$199 . . . NOTHING DOWN on Walker Scott's Easy Pay Optional Account . . . smaller low monthly payments on any amount. FREE PARKING College Grove, La Jolla, and Kearny Mesa. PARK 'N SHOP Validations Downtown, 1 hour with \$3 or more purchases.



**MONTGOMERY WARD**

**November**

**SALE**

**SAVE ON SLIPPERS**  
for all the family



**FREE '64 CHEVELLE**

REGISTER NOW AT  
**WARD'S! YOU MAY WIN!**  
(Get details at your Ward Store)

DRAWING SATURDAY 4:30 P.M.



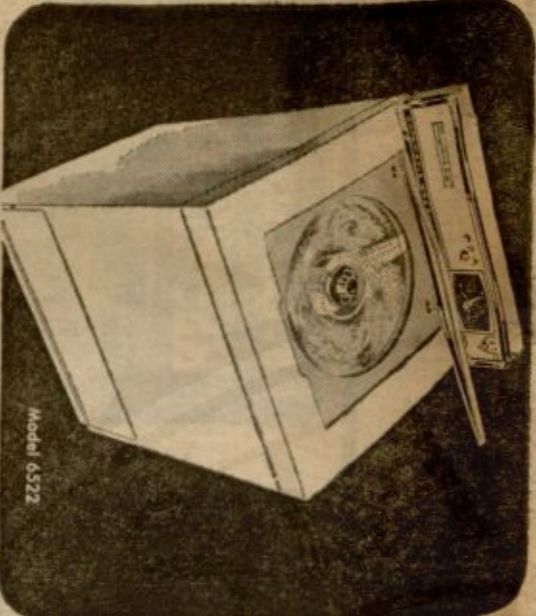
Just see what Ward's has in store for early-bird gift shoppers! Thrifty-priced slippers for all the family. Choose from several styles NOW!

**WOMEN'S REGULAR 2.99 BOOTEE**  
Polars style royon plush; braided trim. Cotton knit lining, crepe rubber soles. Strawberry, light blue. Sizes 5 to 9. **2 44**

**MEN'S REGULAR 3.99 LOUNGERS**  
Glove leather uppers, red cotton fleece lined. Elastic loop side, composition crepe sole. Natural. Sizes 7 to 11. **3 44**

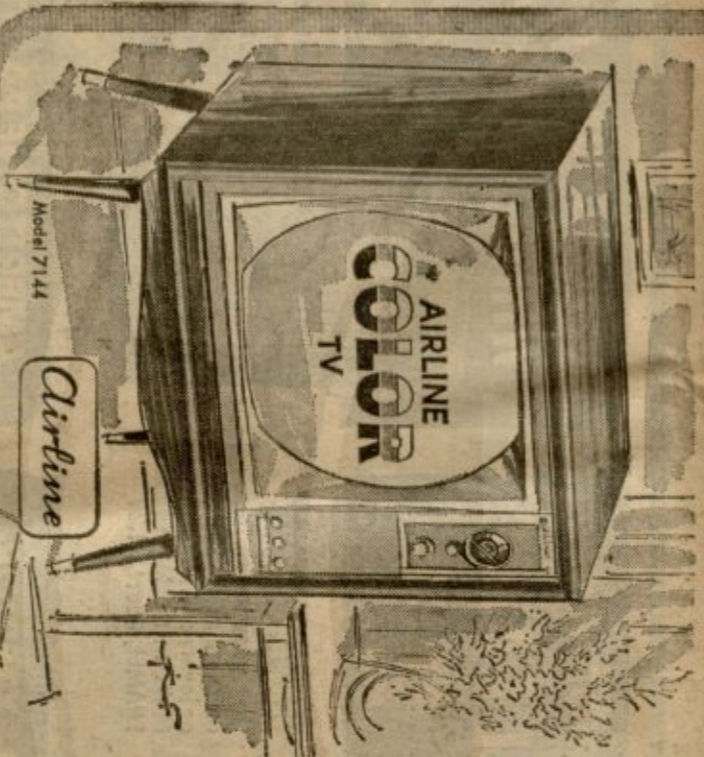
**CHILD'S REGULAR 1.99 SLIPONS**  
Cotton corduroy, elasticized side gore for better fit. Vulcanized composition sole, heel. Red plaid. Sizes 9 to 2. **1 44**

**GIRLS' REGULAR 1.99 SLIPPERS**  
Pretty quilted royon/satin pump with a royon satin bow. Cuth-ton crepe rubber soles, heels. Pink. Sizes 8 to 3. **1 44**



**SAVE! AUTOMATIC**

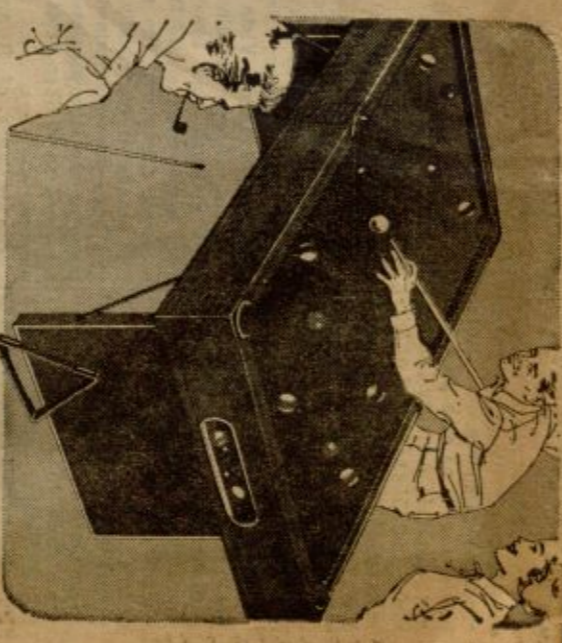
**2-SPEED SIGNATURE WASHER**  
Dependable results and time-saving, too! 2 wash cycles, regular and gentle. Full capacity with 3 wash and 2 rinse temperatures. Lint filter, sediment ejector. **NO MONEY DOWN**  
**\$189**



**COLOR TV AT A LOW PRICE!**

**THRILLING 21" PICTURE, FINE FRINGE RECEPTION**  
**\$499**  
**NO MONEY DOWN**

Airline color TV brings you all the thrills of programs in full color, plus improved black-and-white! You enjoy clear fringe reception; automatic gain control for steady picture, simple front controls. Cabinet is Danish-inspired, in eye-catching walnut finish.  
\*Measured diagonally



**SAVE OVER \$15!**  
**PRO-STYLED, 7-FOOT POOL TABLE FOR MORE FAMILY FUN!**

**7488**

Welcome addition to any home! Similar to illustration. Pine construction with beautiful hammered oak finish. Has green cotton bil-liard cloth; built-in bedlard cloth; built-in bed and leg levelers; molded 2 1/2" balls; two 48" cues. Sets up in minutes, includes all accessories.

**CHRISTMAS LAYAWAY**  
\$5 DOWN . . . holds your pool table 'till December 15.

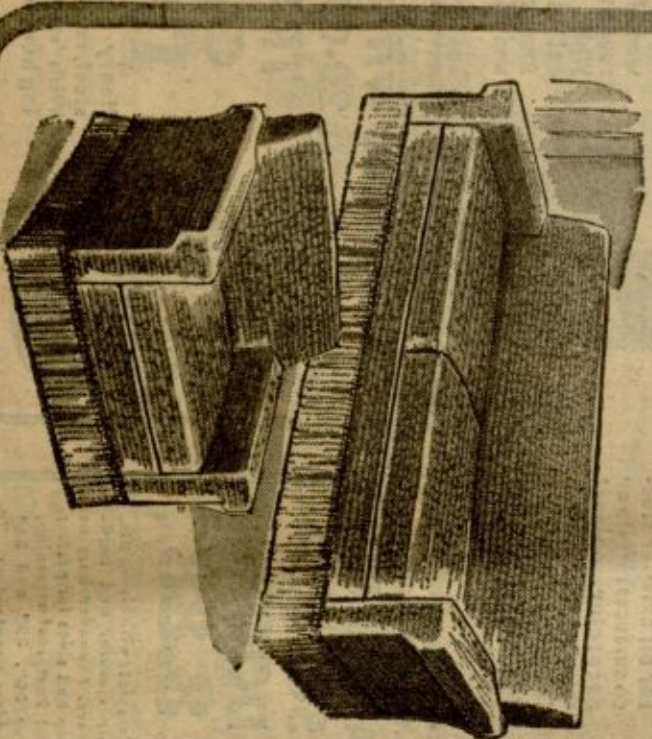
We will deliver in time for Christmas.  
**CHARG-O-IT! STRETCHES YOUR SHOPPING DOLLARS**

get your **CHARG-ALL** plate **now!**



**30" SIGNATURE**

**GAS RANGE WITH CLOCK-TIMED OVEN**  
Oven starts, turns down later to "keep warm" heat, by your clock settings. Lift-off oven door for easier cleaning. Hi-Sim burners have safety lock valves. **NO MONEY DOWN**  
**\$188**



**SAVE 42% ON STRETCH COVERS**

**STRETCH NYLON GIVES THE SMOOTH, SNUG FIT!**  
**\$5.99**  
REG. 10.99  
CHAIR COVER

Wards stretch slip covers fit most furniture shapes. Textured knit cotton/ryon/stretch nylon fabric has line-hugging quality that's tough to beat in ready-made! Stain-resistant finish; washable, need no ironing. 5 smart colors.

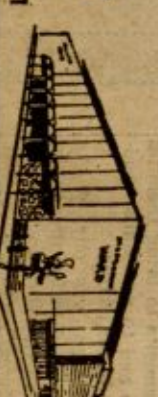
22.98 Sofa . . . . . **12.99**  
16.98 Studio, devene . . . . . **9.99**



**MISSION VALLEY**  
MISSION VALLEY CENTER  
SHOP TIL 9:30 P.M. PHONE 298-8161



**NATIONAL CITY**  
10th AND HIGHLAND  
SHOP TIL 9:00 P.M. PHONE 474-4661



**GROSSMONT**  
GROSSMONT CENTER  
SHOP TIL 9:00 P.M. PHONE 465-2440

**SHOP MONDAY THRU FRIDAY EVENINGS**

ON KEARNY MESA

# Nation's Oldest Shopping Center To Celebrate

A hoodlum, square dance, more than 50 new car models and exhibitions and valuable prizes are some of the attractions of the three day 20th Anniversary celebration getting underway today at rejuvenated Kearny Mesa Shopping Center, America's original shopping center.

Billed as the greatest promotional event ever held in the shopping center, the celebration will take place on the grass mall adjacent to the new Walker Scott store. It has sparked a resurgence of the center.

Today and tomorrow, representatives of four local square dance clubs will provide entertainment from 4 to 5 p.m.

Live music by the Petrick Combo will be featured. From 10 a.m. to 5 p.m. today and tomorrow, an automobile show will be held on the east end of the mall where eight San Diego auto dealers will display their wares.

## Walker Scott: Keystone Store

With the purchase of the 40,000 sq. ft. exterior remodeling has former Linda Vista Department Store in this August, the Walker Scott Company expanded its number of stores in metropolitan San Diego to four. In 1959 the former Stevenson's Department Store in La Jolla was acquired and changed to Walker Scott. La Jolla. In 1960 Walker Scott opened a new store in major regional shopping center, College Grove, San Diego's first.

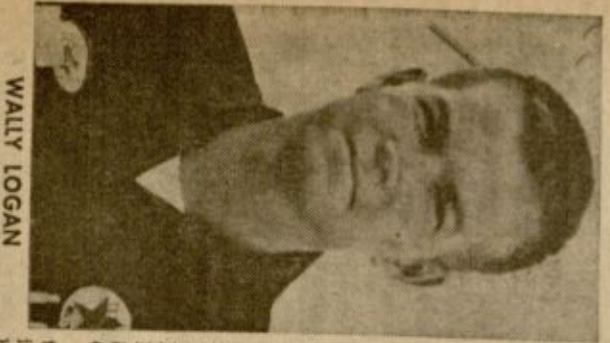
The main store at Fifth and Broadway downtown was opened in 1955 by George A. Scott, just following the death of Walter Walker, President of Walker's Department Store in Los Angeles.

In 1961 Mr. Scott became president of the San Diego Walker's Department Store, having served as vice president and general manager for 16 years. In 1964 the Board of Directors changed the name of the store to Walker Scott Company, following dissolution of the parent store in Los Angeles several years earlier.

When asked to comment on the purchase of Linda Vista Department Store, Mr. Scott made this statement: "We have been watching the retail potentials of this area for many years. We realize the tremendous growth in population and the need for a food store in a good center that's really convenient for shopping in this area. That was one of the reasons we responded to the suggestion of many merchants to change the name of the center to Kearny Mesa in Linda Vista... for we visualize this center becoming a shopping hub for the entire Mesa. Too, we are delighted to be associated with the wonderful merchants who are in this center."

The remodeling and floor expansion program in the Walker Scott Kearny Mesa store brings sales floor area to 40,000 sq. ft.

## Wally's Texaco Opens Friday At Loma Square



WALLY LOGAN

## Expert Says Millions Need Home Repairs

There are 11 million substandard houses in the United States, and many more in need of attention, expansion, or repair, said Edgar V. Hall, vice-president of the National Home Improvement Council in an address before the local chapter of the council last week. Hall revealed that last year American families spent nearly \$15 billion dollars on home improvement, and that there is a potential \$69 billion still to be spent in needed repair and improvement. The local group was told that thousands

## and NOW... use your BANKAMERICARD



OR OUR OWN REVOLVING CREDIT OR 30-DAY ACCOUNTS!  
Yes... San Diego Glass and Paint Buy YOUR kind of credit! Buy your building and decorating needs at savings here... then take the short-or-long way to pay, at all 14 locations!

**BEAUTIFY YOUR HOME!**  
SAN DIEGO GLASS & PAINT CO.  
**35<sup>TH</sup>**  
FREE DELIVERY! SATISFACT

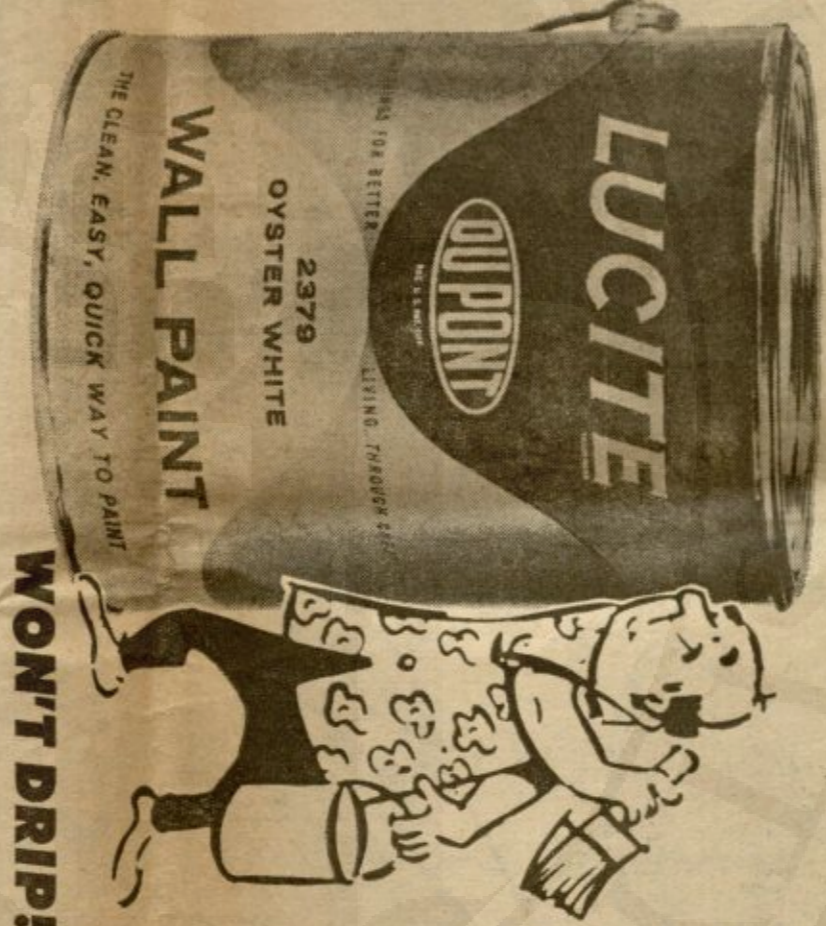
# NEVER BEFORE... PERHAPS NEVER AGAIN!

This Dupont Lucite Offer Expires Sunday, November 10 at 3 p.m.

# FABULOUS LUCITE INTERIOR WALL PAINT



Not 7.50... Not 6.95... Not 5.88... But a Low, Low



# 4.98 GAL.

Washable! Durable!  
Choice of 22 Colors!

LUCITE... the fabulous DU PONT paint, acclaimed everywhere! Never-before low-priced during this event! Lucite needs no thinning or stirring... it's ready to apply. Will not drip or spatter, saving time, preventing damage. Spreads easily with brush or roller... dries in minutes. Gives a beautiful, tough, enduring surface... easy to wash clean. After you've done the paint job, you can clean your hands, brushes and rollers with soap and water! White or beautiful California colors.

MATCHING SATIN SHEEN SEMI-GLOSS - Ct. 2.45

DEVON'S INTERIOR VINYL FLAT WALL PAINT  
**2.98 GAL.**



The scrubable, durable flat wall paint that goes on easily, dries quickly. White or lovely colors. MATCHING SEMI-GLOSS ENAMEL, Quart, \$1.29

DEVON'S SUPER DEVRAL WHITE HOUSE PAINT  
**5.49 GAL.**



Contains Devral, the potent ingredient that gives a brilliant, lasting white sparkle and beauty for years! IN COLORS \$5.98 GAL. PRIMER... \$4.98 GAL.

DEVON DURABLE EASY-ON REDWOOD STAIN  
**1.98 GAL.**



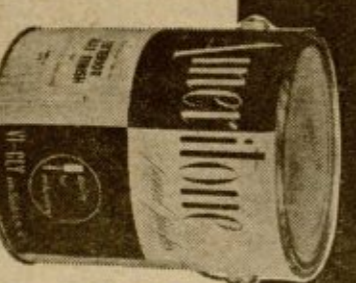
Professional quality! A marvelous, protective stain and sealer. Seals the surface, won't turn black. Amazing natural DEVO-XO 100 OIL. GALLON... \$2.95

AMERTONE EXTERIOR VINYL WALL PAINT  
**4.98 GAL.**



For all exterior stucco surfaces! White or decorator colors! Goes on easily, lasts up with water! The finest of coatings!

AMERTONE PAINT FOR SHAKE & SHINGLE  
**4.98 GAL.**



For shakes, shingles, wood fencing and all rough wood surfaces. White or decorator colors to match Ameritone's house and trim paints!

IN YOUR OWN CONTAINER! PAINT THINNER  
**1.99 GAL.**



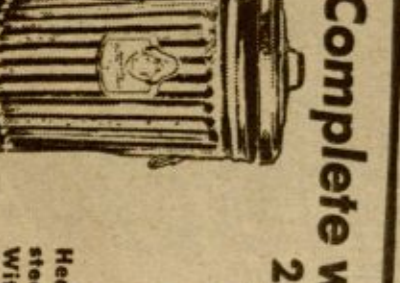
Come and get it... a full gallon at a fabulous low price, but be sure to bring your own container! Excellent, guaranteed quality.

Never Before! ALUMINUM SCREEN DOORS  
**8.88**



Complete with kick-plate, air closure, and hardware. Expander bars at top and sides for perfect fit! Knurled screwing. 30", 32" and 36" widths. Great value!

Complete with Lid! 20-GALLON TRASH CANS  
**1.98**



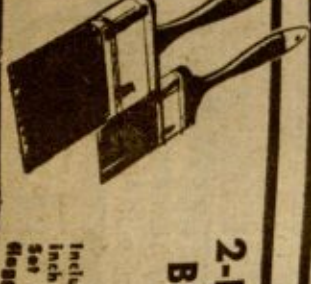
Heavy galvanized steel, rust-resistant! With sturdy carrying handles. Hurry!

16-Ft. Aluminum EXTENSION LADDERS  
**15.88**



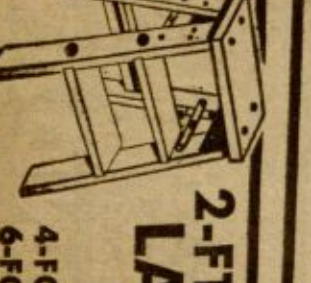
Industrial type. Multi-ribbed rails. 130" safety rings. Vinyl-covered bumpers. Heavy-duty safety steps. 4-Ft. ALUMINUM LADDER, 7.95

2-PC. NYLON BRUSH SET  
**2.95**



Includes a 3 1/2-inch one-4-inch nylon-bristle brush set in rubber, flipped and flipped. Long handle!

2-Ft. WOOD LADDER  
**99c**



4-FOOT... \$2.98  
6-FOOT... \$4.98

PAINT ROLLER & TRAY SET  
**79c**



9" SIZE  
SANDPAPER, SHEET, 1c  
9x12" PAPER DROP CLOTH, 49c



# Lutheran Fete Set for Sunday

Dr. Oswald Hoffmann, of Saint Louis, currently in his eighth year as the Lutheran Hour speaker, will be the speaker for the annual Luthran Fete, a festival of the Reformation Service of the Lutheran Church in Mission Synod in San Diego County this Sunday.

Assisting Dr. Hoffmann will be the Rev. Gerhard Rorhorn pastor of St. James Lutheran Church, Imperial Beach; chairman of the San Diego Pastoral Conference, and the Rev. Eugene W. Bantz, pastor of Faith Lutheran Church, pastoral advisor to the Lutheran Laymen's League, San Diego Sunshine Zone.



OSWALD HOFFMANN

Three choirs will sing hymns of praise and thanksgiving. An adult mixed choir, directed by Gordon Boltz of Chula Vista, a Children's Choir from Lutheran parochial schools, directed by Kenneth Lamb of La Mesa, and a Youth Choir, teenagers, members of the Walther League, directed by Warren Zelt of San Diego. Accompanying the choirs and the congregation will be Douglas Ian Duncan, organist for the 10,000 member Lutheran Church-Mission Synod will be conducted at 4 p.m. at the centrally located, largest, ornate building, First Presbyterian Church, Fourth and Date Streets, San Diego.

# 'Wendy Ward' Leads Teen Charm School

Imagination of a professionally-conducted, personalized charm counseling program for junior high and high school girls in the San Diego area was announced today by E. M. Powell, district manager of the local Montgomery Ward stores. Powell also announced the appointment of Patricia Carlyle as director of the Wendy Ward Charm Center, first of its kind to be offered by a national retailer.

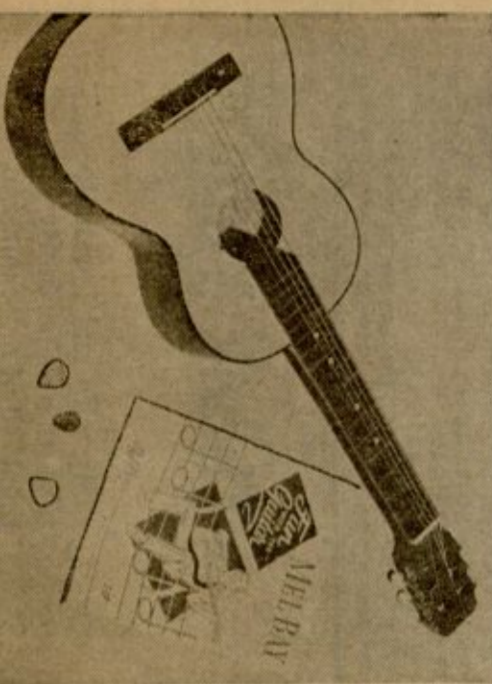


WENDY WARD

Miss Carlyle has just returned from Chicago where she and several other Wendy Ward directors from large Ward stores received special training in fashion counseling, grooming, cosmetics and charm center management. Everything from complexion care to poise, figure control, fashion rightness and conversational arts will be taught in the six-week course. Powell said the store was offering this unique program, comparable to other professional courses costing hundreds of dollars per student, because "We recognize the young girls in this community are seeking competent, professional instruction in personal grooming, etiquette and appearance."

# COAST GUARD SEEKS GRADS

R. Adm. N. W. Sprout, commander, 11th Coast Guard District, has announced that there are a limited number of vacancies open for the Officer Candidate Program of the U. S. Coast Guard. Applicants must be college graduates and those selected will be sent to Yorktown, Va., for 17 weeks of training. Upon graduation, they will be commissioned as Ensigns in the U. S. Coast Guard Reserve. The next Officer Candidate class will convene Feb. 9, 1964. Applications must be submitted by Jan. 1, 1964 for this class. Complete details on OCS may be obtained by contacting Commander, 11th Coast Guard District, 706 Times Bldg., Long Beach, ZIP-90802.



# GUITAR SPECIAL \$29.95

New, famous-name Marco Polo guitar, wood construction, standard size... \$29.95! CALL TODAY: 239-8122

# LAX PARENTS: LOOSE MORALS

As a man of culture and sophistication I seldom address myself to the problems and conduct of the young, as you know, except to caution against permitting them to intrude upon and interfere with adult living.

I find, however, that a slight, but insidious, infiltration has striven that requires my advice. It can be stated simply: The number of illegitimate offspring is rising at year by year, and the age at which young women are having such offspring is falling year by year. Teen-age mothers without benefit of clergy are so common as to barely rate mention in many circles. It adds up to a picture of sexual delinquency by those of tender years that threatens the moral fiber of this Nation. Inevitably, much of the responsibility for such delinquency rests on heavy parents, who have made little or no effort to bring up their children properly.

WELL, DO I remember my dear aunt the Countess remarking one day that whereas Europeans were occupied with sex, the too many Americans were preoccupied with money. She found it shocking that so many of you thought of so little else. But at least the Americans she was talking about were adults.

**UPHOLSTERY and DRAPERY FABRIC SALE**  
 THOUSANDS OF YARDS NOW... San Diego's largest upholstery inventory on sale at savings of 30% to 75% and more.

**Upholstery 99¢** DRAPERY 77¢  
 FABRICS 3rd. UP FABRICS 3rd. UP

If you aren't planning to do the work yourself, we also operate our own complete custom drapery and upholstery shop.

**GOLDEN STATE Upholstery & Drapery**  
 2747 University at 28th Ph. CV 8-8201  
 Use Your BankAmericard Open Friday Nites 7TB 9

# WOULD YOU LIKE TO SAVE MONEY ON FOOD?

If you do, now is the time to start buying direct from us at discount and save hundreds of dollars. At last, here is a way you can feed your family better for a cost so low it will amaze you. Check these unheard of low prices on THIS WEEK'S SPECIAL FOR MEMBERS:

**Folgers or M.J.B. COFFEE 2 lbs. 79¢**

**Peanut Butter, Large 28 oz. SKIPPY Reg. 89¢ 69¢**

Now feed your family the way they WANT to eat instead of the way your BUDGET forces them to eat. Our Meat and Food Company has been serving the large volume buyers in Southern California for many years. Now, for the first time, you can buy direct from us at the same low prices, large restaurants and hotel pay. IN ADDITION TO SAVING HUNDREDS OF DOLLARS ON YOUR GROCERY BILL YOU ENJOY THE SAVINGS ON OUR SPECIALS!

Listed below are examples that may be on special from week to week.

Ground — Reg. 79¢	39¢	Swift's Premium Bacon	lb. 39¢
TIDE	39¢	BACON	lb. 39¢
C & H SUGAR	5 lbs. 39¢	Hunt's #2 1/2 Can PORK 'n BEANS	ea. 9¢
Ardens MARGARINE	lb. 11¢	Palmolive—Bath Size SOAP	ea. 7¢
Garber's Strained—4 1/2 oz. BABY FOOD	ea. 5¢	Best Foods MAAYONNAISE	qt. for 39¢
Former John's WIENERS	lb. 31¢	All Brands, Reg. Size CIGARETTES	Cn. \$173

# DO YOU LIKE TOP QUALITY BEEF? WE FEATURE SWIFT'S PREMIUM PRO-TEN BEEF

YOU DON'T HAVE TO BUY A FREEZER TO PARTICIPATE IN THIS SERVICE. YOU MAY EVEN HAVE AN EMPTY ONE NOW. IF YOU DON'T HAVE A FREEZER, WE FURNISH YOU WITH FREEZER FACILITIES TO USE

**Unconditional Guarantee**

- All of our food is 100% unconditionally guaranteed in writing. Any food which does not meet with your complete satisfaction is replaced at no cost to you.
- A complete line of bottled goods, canned goods, meats, vegetables, chickens, seafood, cereals, bread, etc., all at our lowest prices. (Sorry, no milk or dairy products.)
- Truck service is available for customers at THE DISCOUNT HOUSE for food serving the Greater San Diego area.
- You save time, money and food with facilities besides.
- You have a Super Market right at your finger tips, and rid yourself once and for all of the high cost of food.

**FROSTMASTER FOODS**  
 Serving San Diego County

WE HAVE CONVENIENTLY LOCATED MEAT AND GROCERY WAREHOUSE FACILITIES IN SAN DIEGO PROPER AND THE SURROUNDING COUNTRY. ALSO PROMPT DELIVERY SERVICE AVAILABLE IN MOST COUNTY AREAS

Don't Wait... Call Now... **234-2183**  
 No Obligation



# WIN A 1964 CAR!

**PARK and SHOP DOWNTOWN**

ENTER THE NEW CAR SWEEPSTAKES

At The Stores Displaying This Emblem



You May Win One OF These 1964 Cars

- DEALERS & CARS**
- Boy Shore Motors...Falcon Futura
  - British Motors...Hillman Super Minx
  - Campbell Chevrolet...Monza Coupe
  - City Chevrolet...Monza Coupe
  - Davies Motors...Rambler Classic 500 4 door
  - J. R. Townsend Co....Comet 4-door
  - Howard Taylor Dodge...Dodge Dart
  - Tax and License Included! Drive It Away...

**DRAWING MONDAY DEC. 9TH AT THE PLAZA, 7 p.m.**

These Downtown Stores Give Park and Shop Stamps to Pay For Your Parking

# GET ENTRY BLANKS HERE

<b>FIFTH AVENUE</b>	<b>SIXTH AVENUE</b>	<b>C STREET</b>
<ul style="list-style-type: none"> <li>• ANCKER'S PENDLETON SHOP</li> <li>• EFFERON'S BROTHER'S FOOT COMFORT</li> <li>• GRAY'S FLDS</li> <li>• GRAYSON'S HARTFIELD'S</li> <li>• JESSORS JEWELERS</li> <li>• KAY JEWELERS</li> <li>• LERNER'S</li> <li>• LINEN CLOSET</li> <li>• LOCAL LOAN CO.</li> <li>• MARSTON'S NATIONAL DOLLAR STORE</li> <li>• PITTS THE TRUNK MAN</li> <li>• ROBERT'S SAN DIEGO HARDWARE</li> <li>• SIMON-MULLER PHARMACY</li> <li>• STRECHER'S UNIVERSAL BOOT SHOP</li> <li>• WALKER SCOTT</li> </ul>	<ul style="list-style-type: none"> <li>• BUNNELL PHOTO</li> <li>• CAPITAL FINANCE CO.</li> <li>• HELIBRON ELECTRIC</li> <li>• JERAN'S</li> <li>• ROHAN'S SAN DIEGO FEDERAL SAVINGS</li> <li>• SAN DIEGO STATIONERS</li> <li>• STEWART'S PEN SHOP</li> </ul>	<ul style="list-style-type: none"> <li>• BOLDRICK'S SHOES</li> <li>• CENTRAL FED. SAVINGS</li> <li>• THOMAS ERWIN SHOES</li> <li>• EXCLUSIVE FLORISTS</li> <li>• JOHN HOGAN</li> <li>• HUNECK'S FURS</li> <li>• A. L. JACOB'S &amp; SON</li> <li>• SILVERGATE SAVINGS</li> <li>• SOUTHERN CALIF. MUSIC</li> </ul>

**SHOP DOWNTOWN**

\* MORE STORES \* MORE SELECTION \* MORE OF EVERYTHING GOOD

San Diego Downtown Association



# WALLPAPER-PAINT

## Save 10% to 50%

SAVE ON EVERY ITEM EVERY DAY

OVER 5,400 ITEMS TO CHOOSE FROM

QUALITY CONTROL: Standard Brands Paint Laboratory, staffed by 13 skilled technicians and supervised by qualified production chemists, is your guarantee that the merchandise is of

Interior or "economy" grade. For here you find the most modern and up-to-date conditions possible. Every item offered to the public in our retail stores is tested and analyzed to ensure that the quality is the best possible for the job it is intended to do.

STANDARD BRANDS PAINT CO. Buy the Best Buy the Best Buy the Best

EVERYTHING ALWAYS SOLD WITH AN UNCONDITIONAL MONEY BACK GUARANTEE

FREE EXPERT SERVICE

OPEN 7 DAYS & 5 NIGHTS

MONDAY THRU FRIDAY 8:00 am to 9:00 pm

SATURDAY 8:00 am to 6:30 pm

SUNDAY 8:30 am to 5:30 pm



## FLOOR COVERING SALE!

### INLAID LINOLEUM

• SERVICE GAUGE  
• EXTREMELY DURABLE  
• FINEST QUALITY  
• COMPAREABLE  
RETAIL 15¢  
NOW 7 1/2¢

PURE VINYL  
SQ. FOOT FLOOR TILE  
"DANBURY"  
• FINE QUALITY  
• LARGE SELECTION  
• COMPAREABLE  
RETAIL 50¢  
NOW 39¢



VINYL INLAID  
"PORTOFINO"  
• 6 FT. WIDTHS  
• SOES OVER WOOD AND ABOVE GRADE CONCRETE  
• 5 PATTERNS  
• COMP. RETAIL 2.50 NOW 1.69 SQ. YD.

VINYL ASBESTOS FLOOR TILE  
• GOES OVER WOOD OR CONCRETE  
• LARGE SELECTION  
• COMP. RETAIL 10¢ PER SQ. FT.  
NOW 10¢

VINYL CORTON FLOOR COVERINGS  
• PATRICIAN .. 5.59  
• MONTANA .. 6.95  
• TESSERA .. 5.95

## SAVE! ON FINEST QUALITY ROOF COATINGS

"WON'T CRACK OR RUN"  
PROTECT YOUR ROOF THE EASY DO-IT-YOURSELF WAY

BLACK ASPHALTUM 2.49  
COMPARABLE RETAIL PRICE 1.00-NOW ONLY 79¢ OR 79¢

FIBERED ASBESTOS 2.89  
COMPARABLE RETAIL PRICE 1.20-NOW ONLY 89¢ OR 89¢

PLASTIC ROOF CEMENT NOW 98¢  
ROOFING BRUSH HEAVY DUTY 98¢

PIGMENTED REDWOOD PAINT 1.29 4.95  
ASSORTED COLORS (NO WHITE) 1.69

"SAFEMATE" FINE HOUSE PAINT 1.69

## FAMOUS BRAND QUARTS PAINT SALE

### SAVE 64% ACRYLIC LACQUER

AVAILABLE IN LARGE SELECTION OF ALL NEW COLORS INCLUDING METALLICS  
COMP. 1.65 NOW 1.65

"BPS" PATTERSON SARGENT CO.  
"SATONE" ALKYD FLAT INTERIOR ENAMEL  
• 1 COAT  
• SCRUBBABLE  
• OIL BASE  
• ASSORT. COLORS (NO WHITE)  
COMP. 1.65 NOW 1.65

59¢  
60¢  
25¢  
50¢

## MICA SALE!

COUNTER-TOPPING  
FINEST QUALITY  
• WATER PROOF  
• GREASE PROOF  
• COMPARABLE  
RETAIL PRICE 60¢  
PIECES 2 FT. TO 8 FT. NOW 25¢

PATTERNED  
THESE LOVELY IMPORTED ENAMELS WILL GRACE ORIENTAL OR ANTIQUE THREE COVER-YE-DESIGNS CLOVELEAF, 1-SQUARE OR FLOWER.

WOOD PANELS  
IMPORTED  
FINEST QUALITY  
CUT-OUT DESIGNS  
THE NEWEST IDEA IN DECORATING. USE AS ROOM DIVIDERS, HEAD-BOARDS, PANELING, ETC  
DO-IT-YOURSELF

15 1/2" x 12 1/2" x 1/8" COMP. RETAIL 2.89 NOW ONLY 1.59

15 1/2" x 23 1/2" x 1/8" COMP. RETAIL 98¢ NOW ONLY 49¢

SHELF ARMS & HOLDERS  
STURDY METAL HOLDERS DESIGNED TO HOLD RECORDS, BOOKS, SHAVING AIDS.

6" 18¢ ea. 24" 37¢ ea.  
8" 22¢ ea. 48" 69¢ ea.  
18" 26¢ ea.

## LATEX PAINT



A-1 SUPERTONE INTERIOR  
• DRIES IN ONE HOUR  
• SCRUBBABLE  
• NO PAINTY ODOR  
• TOUGH & DURABLE  
• EASY TO APPLY  
• CLEAN-UP WITH SOAP AND WATER  
• WHITE AND A COMPLETE LINE OF POPULAR COLORS

• MAXIMUM SCRUBBABILITY  
• GARDNER-HOLT SCRUB TEST 5,940 CYCLES

• MAXIMUM COVERAGE  
• MOST CONTRAST RATIO TEST

• MAXIMUM COLOR-RETENTION  
• FIDE-OMETER TEST

RUBBER BASE WASHABLE LATEX FLAT INTERIOR WALL FINISH

"A-1" OIL AND LEAD CO.

NOT AN INFERIOR ECONOMY GRADE, BUT A TOP QUALITY LABORATORY TESTED PRODUCT

NO FINER QUALITY NO MATTER HOW HIGH A PRICE YOU PAY NOW 2.95 GAL.

MATCHING SEMI-GLOSS ENAMEL NOW 1.19 qt.

WALLCOVERING SALE

WASHABLE-SUNFAST  
• PRE-TRIMMED  
• COVERS UP TO 14 FOOT WALL SPACE  
• 6 SCENES TO CHOOSE FROM

COMPARABLE RETAIL PRICE 22.50 NOW 5.95 EACH

MURAL COMPLETE WITH HANGING TOOLS AND PASTE. NOW 7.49 COMPLETE

VINYL UPHOLSTERY MATERIAL SALE  
REINFORCED CANVAS BACK

NATIONALLY FAMOUS BRAND VINYL - FINEST QUALITY TOUGH AND DURABLE THESE VINYL PLASTIC MATERIALS ARE THE NEWEST PATTERNS, COLORS AND DESIGNS. IDEAL FOR DO-IT-YOURSELF. THEY ARE SIMPLE TO CUT, SEW, TACK OR PASTE. JUST WIPE CLEAN WITH A DAMP CLOTH. WON'T CRACK OR TEAR.

48 & 54 INCH WIDTHS  
LARGE SELECTION  
COMP. RETAIL 1.45 NOW ONLY 69¢

ARTIST OILS  
FINE QUALITY 20 C.C. TUBE  
34 COLORS TO CHOOSE FROM  
COMPARABLE RETAIL 40¢ NOW 25¢

WATER COLOR SETS 59¢  
WHITE AND 11 COLORS. NOW 59¢  
CASEIN COLOR SETS 59¢  
WHITE AND 11 COLORS. NOW 29¢  
PALETTE KNIFE. . . . . NOW 29¢  
LINSSEED OIL. 8 OZ. - NOW 35¢  
TORPENTINE - 8 OZ. - NOW 24¢

ALSO AVAILABLE A COMPLETE LINE OF ARTISTS SUPPLIES

MOVABLE PHILIPPINE MAHOGANY LUAN SHUTTERS

HORIZONTAL LOUVER  
HAND SAWN  
REBUILT TO PRINT OR STAIN  
6 1/2" x 3 1/2" COMP. RETAIL 49¢  
PLUS 35 SIZES: 7, 8, 9, 10, 12 IN. WIDTHS. 8x20 IN. 20, 26, 29, 32, 36 IN. LENGTHS AT SLIGHTLY HIGHER PRICES.

VERTICAL LOUVER  
6 1/2" x 3 IN. COMP. RETAIL 59¢  
7-20 IN. 1.09  
7x28 IN. 1.38  
8x20 IN. 1.28  
8x28 IN. 1.39  
9x20 IN. 1.39  
9x28 IN. 1.79  
10x24 IN. 1.89  
10x28 IN. 2.39

IMPORTED DOOR MATS

FINEST QUALITY  
• BEAUTIFUL NATURAL COLOR  
• TOUGH AND LONG LASTING  
• HAND WOVEN SISAL  
• USE INDOORS OR OUT

THREE LOVELY STYLES

HAITI BRAID MAT 1.39  
17 IN. x 27 IN. COMP. RETAIL 1.98 NOW 1.39

LOVERS KNOT MAT 1.59  
18 IN. x 30 IN. COMP. RETAIL 2.69 NOW 1.59

YACHT MAT 1.69  
18 IN. x 30 IN. COMP. RETAIL 2.79 NOW 1.69

SELF-SPRAY ENAMELS  
FINE QUALITY  
WHITE AND 10 COLORS  
"SAFEMATE" ENAMEL  
"A-1" OIL AND LEAD CO.

100% PURE HOUSE PAINT  
FINE QUALITY  
WHITE AND ALL COLORS  
NOW ONLY 3.89

LOG OIL  
SPECIAL PURPOSE  
GOOD GRADE  
1.39

BARN & FENCE PAINT  
COMP. RETAIL 3.00  
NOW 1.39

WIRE BRUSH 1.99  
3 ROW x 13-INCH COMP. RETAIL 3.00

WALLCOVERING SALE

FULL WALL SCENIC MURALS

WASHABLE-SUNFAST  
• PRE-TRIMMED  
• COVERS UP TO 14 FOOT WALL SPACE  
• 6 SCENES TO CHOOSE FROM

COMPARABLE RETAIL PRICE 22.50 NOW 5.95 EACH

MURAL COMPLETE WITH HANGING TOOLS AND PASTE. NOW 7.49 COMPLETE

vinyl wall coverings  
• 100% WASHABLE  
• SUNFAST  
• PRE-TRIMMED  
COMP. RETAIL 1.99  
NOW 1.99



SHOWN ABOVE LOVERS KNOT MAT

SHOJI SWITCH PLATES  
REAL LEAVES AND BUTTERFLY PATTERNS  
24-OZ. POLYURETHANE SELF-SPRAY ENAMEL NOW 98¢

SPECIAL PURCHASE WALLPAPER  
SUNFAST - WASHABLE  
SOME PRE-TRIMMED  
LARGE ASSORT.  
COMP. RETAIL 3.99  
NOW 3.99

PRE-TRIMMED WALLPAPER  
WASHABLE - PRE-TRIMMED  
HUGE SELECTION OF ALL NEW PATTERNS  
COMP. RETAIL 2.25  
NOW 2.25

FOR OVER 37 YEARS

QUALITY SERVICE VALUE

OPEN SUNDAYS 8:30 to 5:30  
SATURDAYS 8:00 to 6:30

LOS ANGELES  
1023 SOUTH BROADWAY  
Corner of Pine Blvd.

VAN NUYS  
6001 SEPULVEDA BLVD.  
Corner of Van Nuys & Linderoth

ANAHEIM  
1 Block East of Brookhurst  
Corner of Brookhurst & Linderoth

FRESNO  
CORNER OF TULLOCK & VENTURA

SANTA MONICA  
1411 LINCOLN BLVD.  
3 Blocks North of Valley

EL MONTE  
360 PECK ROAD  
3 Blocks North of Valley

SAN BERNARDINO  
305 SOUTH "E" STREET

PHOENIX  
221 EAST ADAMS

WEST VALLEY  
WOODLAND HILLS

SAN DIEGO  
CORNER KETTNER & E  
Drive in Parking  
From E of Kettner

LA MESA  
CORNER OF LA MESA & EL CAJON BLVD.

SANTA ANA  
3416 SO. MAIN (Downtown)  
1 Bl. So. of Warner (Downtown)

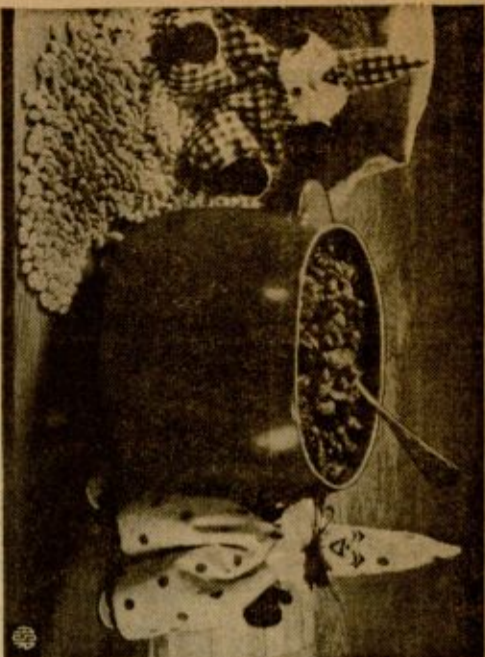
POMONA-ONTARIO  
1 Block East of Hudson  
FAIR OAKS & HOLLY  
2 Blocks North of Colorado

BURBANK  
510 NORTH VICTORY BLVD.  
3/4 Block North of Burbank

SAN DIEGO  
CORNER OF LA MESA & EL CAJON BLVD.

BAKERFIELD  
CORNER OF 13th & "O" STREETS

OPEN 5 NIGHTS  
Mon. Tues. Wed. Thur. Fri.  
8:30 A.M. to 5:00 P.M.



### Old-Time Pot-O-Beans Slow-Baked for Flavor

Out of Idaho's bean bags and your scrap bag comes Beans and the Clown with a partner or three. Fun to make while dinner's Pot-O-Beans slow-bakes unattended, sending its tantalizing fragrance all over the house. These Baked Beans have something which cannot be bought—the flavor of Home!

The bean "recipe" is traditional except for the use of Idaho-grown La Fage white beans. Northern varieties of dried beans. Sometimes, break with tradition and use instead Idaho's dappled Pinto beans, a flavor treat indeed.

### Sandwiches Prove Help To Calorie Counters

Seems many of us are concerned about expanding waistlines these days, and you homemakers planning meals for the whole family know that figuring for calorie counters can be somewhat of a problem as well.

Did you know that sandwich meals—so popular and easy—can be a real help in low-cal meal planning? Many sandwiches are almost complete meals in themselves and are surprisingly low in calories.

To begin with, the bread that supplies the nourishing "wrapper" for the sandwich is comparatively low in calories. One slice of standard white bread contains only 60 calories. Other breads such as whole wheat or French, whole or 65 calories and add delicious flavor and texture interest to sandwiches.

By choosing sandwich fillings wisely and imaginatively you'll have delicious sandwiches the whole family will enjoy and the calorie counter can eat without fear of exceeding his daily calorie requirements.

### Salmon Oriental Table Delicacy

Salmon, sole fillets, halibut, swordfish, albacore, rockfish fillets, and rex sole are to be found fresh or frozen in local markets.

Salmon was an important part of man's menu long before the birth of Christ. In Caesar's time, salmon was well established as a table delicacy. It was Caesar's soldiering who are credited with giving salmon its name. During the march to the conquest of Britain, it is claimed they saw a legion of silver fish leaping above the river and gleaming in the sunlight, and they christened them "leaper" or SALMO.

The nutritional values of salmon are considerable: calcium, iodine, vitamin A, niacin, thiodavin and other B Group vitamins. The fats are unsaturated.

Here is a recipe that does wonders for salmon, giving it the exotic touch with a seasoning of soy sauce.

- SALMON ORIENTALE
- 2 pounds salmon steaks,
- cut 1-inch thick
- 2 teaspoons salt
- Dash pepper
- 1/4 cup flour
- 1/4 cup butter or margarine
- 2 cups celery, chopped
- 1 cup onion rings
- 3 tablespoons green pepper, chopped
- 2 cups whole-kernel corn
- 2 tablespoons soy sauce
- Sprinkle salmon on both sides with 1 teaspoon salt and dash pepper. Roll in

### California Perennial Borders Different

Volunteers have been written on planting a perennial border, and almost to a paragraph, they are useless in California. Most are written for colder climates where a good many months. None consider that in California, the perennial border should be plantable for 12 months each year.

This does not imply in any way that Californians should refrain from planting a perennial border. We merely point out that the problem should be approached from a different angle. Annuals should be incorporated, in part, so that color can be a year-round affair. Perennials of ever-blooming habit are often preferred to those of a showier disposition which put all their bloom in one month. Yet the latter should certainly be included, too.

In checking with the California Association of Nurserymen we find that one perennial which is always recommended is the Blue Marguerite, or Pelicia. This daisy-like plant is in the midst of blooming and in the mildest areas will show some color even in winter. It takes a short time out to form a new framework of branches.

Blue Marguerite is as naturally frostproof as any plant can be, tolerating sun or part shade, poor soil and infrequent watering. When once established, it will often reward itself, too, though don't count on it for conditions must be just right for such a happy circumstance. In the middle and front of a border, combined with Yellow Marguerites, which are also near-ly ever-blooming, it can pro-



### Coffee Raisin Pilau Easy, Exotic Dessert

A practically perfect dessert, we'd say, is one that is quickly and easily made, but manages to look elegant. It has an exotic origin, such as Coffee Raisin Pilau, so much the better. This simple dessert version of the oriental rice and spice combination is studded with raisins and chopped walnuts.

You'll want a fragrant pot-fal of hot coffee to serve with Coffee Raisin Pilau. Coffee, like pilau, originated in the East—which may be why they complement each other so well. Just make certain your coffee is brewed fresh and rich, served steaming.

**milk** FRESH DAILY AT LOW CASH & CARRY PRICES!  
SHOP OUR WEEKEND SPECIALS  
Our Own 1/2 gal. 44¢ NEW 1/2 gal. 44¢  
NEW 1/2 gal. 44¢ NEW 1/2 gal. 44¢  
DE RUYTER'S DAIRY  
Corner 47th & Delle St., San Diego 13, Phone CO 4-3119

WINTER RATES  
**25% OFF**  
**HOUSE PAINTING**  
COMPLETE OUTSIDE AVERAGE ONE BEDROOM HOUSE  
**7950**  
Includes: Preparing and painting of outside trim and walls. Only W. P. FULLER CO. PAINTS used. FREE color consultation with our artists.  
\*Labor estimated on an hourly scale for new work.

SEE OUR LARGE DISPLAY OF OIL PAINTINGS  
**TOM-TOM** SIGN CO. (home decorating div.)  
212, E. 8th St. National City,  
PH. 477-0068  
A COMPLETE SIGN SERVICE ALSO AVAILABLE

**De Falco's** SPECIAL VALUE  
BANQUET  
**DINNERS**  
Chicken, Roast Beef, Turkey, Ham, Salisbury Steak, Mexican, Italian, Beef Enchilada, Chopped Beef, or Haddock.  
quick frozen. Just heat n' eat.

**3 for \$1.00**  
CHICKEN of the SEA  
**CHUNK TUNA**  
Fine light meat tuna, Hi-Protein, so healthful!  
Reg. 89¢  
4 can

**BREAD SHORTENING**  
Choice of white or wheat. No preservatives. 16 oz. loaf.  
**4 for \$1.00**  
GOLDEN CREME  
**SHORTENING**  
Pure all vegetable shortening. Perfect for all you bake or fry. 3-LB. CAN  
**59¢**  
SMUCKERS  
**JELLIES**  
Blackberry, Elderberry, Mint, Cranberry or Cinnamon Apple. 10-oz. Jar  
**5 for \$1.00**  
**MAYONNAISE**  
BEST FOODS  
Made from whole eggs. Ideal for salads or sandwiches.  
**49¢**  
QUARTS

Ocean Spray, whole or jellied, perfect in molded salads or with fowl. Stock up!  
**CRANBERRY SAUCE 2 for 47¢** No. 300 can  
Hunt's, made from vine ripened tomatoes, adds a zest 'ry touch to meats, or fish.  
**TOMATO CATSUP 2 for 29¢** 14-oz. bottle  
**FIRST DAY FRESH CALIFORNIA GROWN FRYERS**  
Only at De Falco's can you buy! First day fresh, California grown golden, plump and tender fryers. Guaranteed to be the best you've ever eaten by De Falco's. Come in today and try one of these truly delicious frying chickens.

**24 hours FRESH**  
**33¢**  
WHOLE BODY  
FARMER JOHN HAM  
FULLY COOKED  
Lean, sweet pink meat. Deliciously smoked. Delicious.  
FULL SHANK HALF  
Wines & Liquors  
IMPORTED SCOTCH  
Carrs, light mellow and so satisfying. Perfect in cocktails or straight.  
**\$3.99**  
FIFTEEN

**CUT UP PAN READY 37¢**  
**De Falco's LUNCHEON MEAT 29¢**  
SLICED, all meat Bologna, all beef Bologna, olive loaf or sandwich loaf. 6-oz. pkg.  
**LEMON MERINGUE PIE 59¢ ea**  
Bakery  
Made from pure lemon juice and butter, baked in a tender, flaky shell topped with egg white meringue.

Golden Ripe  
**BANANAS 10¢**  
Cucumbers 3 for 19¢  
Oranges 4 for 39¢  
Produce  
NOW 10 STORES  
**De Falco's** FOOD GIANT  
PONTIAC • CAMDEN • GAITHERSBURG • NORTH CAMDEN • FEDERAL & BRIDGES • E. CLAY • HAGER ROAD • SPRING WALK • CHILMARK • DON WYATT • CAMPUS SHOPPING CENTER  
PH. 477-0068

PRICES EFFECTIVE  
THURS., FRI., SAT., SUN.  
NOV. 7-8-9-10

ALL THRIFTMARTS OPEN VETERANS  
DAY NOV. 11 - 10 A.M. - 7 P.M.

3333 ROSECRANS AT  
6120 LAKE MURRAY AT EL PASO  
1049 ELKELTON AT JALACHIA

San Diego Independent, Thursday, Nov. 7, 1963

(W-5) Page A11

# Thriftmart

# FRYERS

Grade 'A' Fresh Chickens

U.S.D.A.

EASTERN GRAIN-FED  
**PORK LOIN**  
ROAST END **39c**  
LOIN END ... **49c**



Whole Body **29c**  
CUT UP 33c

**—CHOPS—**  
RIB END ... **45c**  
CENTER CUT  
RIB or **69c**  
LOIN

ICELANDIC FROZEN BREADED HALIBUT	FANCY LARGE GREEN SHRIMP	KIRKPATRICK'S EASTERN OYSTERS	CARNATION FROZ SOLE FILLETS	LEE'S CORNED BEEF	DRUMSTICKS AND THIGHS	BREASTS AND NECKS
1-oz. pkg. <b>69c</b>	1-oz. pkg. <b>79c</b>	1-oz. can <b>59c</b>	1-lb. pkg. <b>59c</b>	4-lb. can <b>59c</b>	<b>53c</b>	<b>53c</b>
OSCAR MAYER EASTERN PORK SPARE RIBS	SMALL SIZE	LEE'S SMOKED PICNICS	FINE QUALITY	BACKS AND NECKS		<b>10c</b>
<b>39c</b>		<b>39c</b>				

MY-T-FINE  
**PUDDINGS** 3 5/8-oz. pkg.  
LEMON, CHOC., VANILLA, CHOC.-NUT

BREAKFAST SPECIAL  
Sliced Bacon **49c**  
Sausage Roll **39c**  
Link Sausage **49c**



**29c**  
PRE-SLICED 35c

**325c**  
P K G S.

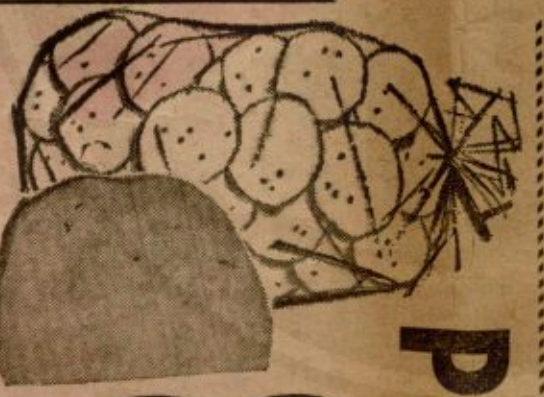


KELLOGG'S  
CORN FLAKES 13 oz. pkg.  
FRUIT LOOPS 7 oz. pkg.  
SHREDDED WHEAT 13 oz. pkg.

10-OZ. PKG.  
**GREEN PEAS,**



**10c**  
EA.



**POTATOES** U.S. No. 1  
RUSSET

**825c**  
LB. CELLO BAG

**APPLES** **10c**  
**BANANAS** **10c**  
lb.

FARMER JOHN'S DELICATESSEN  
WIENERS 1-lb. pkg. **49c**  
CHEESE MONTEREY JACK 6 oz. lb. **69c**  
CHEESE PURITY SLICED EDAM PKG 6 oz. **39c**  
CHEESE PURITY GOUDA 8 oz. pkg. **49c**

BRINSETE CRINKLE CUT POTATOES 16 oz. pkg. **49c**  
TATERIOTS 16 oz. pkg. **49c**  
SMART & FINAL PEANUT BUTTER 1-lb. jar **39c**

VENOR'S GINGER ALE LIMITED OFFER  
28 oz. bottle **19c**  
MILANI'S 16 oz. bottle **39c**  
BBQ Sauce **39c**



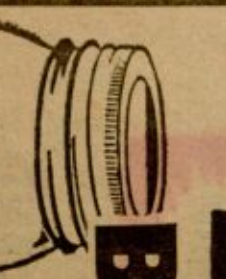
**COFFEE**  
PRICE INCLUDES 5¢ OFF DEAL

KENTUCKY STRAIGHT BOURBON WHISKEY **339**  
KENTUCKY DISTILLER **339**  
SCOTS MIST IMPORTED **398**  
SCOTCH WHISKY **398**

VENOR'S GINGER ALE LIMITED OFFER  
28 oz. bottle **19c**  
MILANI'S 16 oz. bottle **39c**  
BBQ Sauce **39c**

ARIZONA GRAPEFRUIT TABLE SIZE NEW CROP **5c**  
MUSHROOMS FRESH 1/2-lb. PKG. **39c**  
NORTHERN PAPER TOWELS 4c OFF LABEL **33c**

BETTY CROCKER'S SUPREME  
**CAKE MIX**



**BEST FOODS**  
MAYONNAISE

FOR AUTOMATIC DISHWASHERS  
CASCADE 6c OFF DEAL  
DETERGENT 20 OZ. PKG. **39c**  
JESSEYMAID CATERING ICE CREAM 1/2 Gallon Carton **59c**

4c OFF PKG.  
**3**  
P K G S.



**49c**  
FULL QUART

NOW AT THRIFTMART  
**5c** off size HEINZ KETCHUP  
OFFER EXPIRES SUN., NOV. 10, 1963  
Limit One Per Family  
★ GOOD ONLY WITH THIS COUPON ★  
14 OZ. BOTTLE WITH COUPON **19c**  
20 OZ. BOTTLE WITH COUPON **29c**

# ANN LANDERS Writes To You



**DEAR READERS:** Parents often write and ask me what makes some children turn out well and some badly. Why do some youngsters grow up to be responsible, loving, well-adjusted adults while others seem to lose their way?

There are no pat answers to these questions. Heredity is undeniably a factor but there is more and more evidence to support the theory that a child in the net result of what happens to him in his early years.

The following piece came in the mail from a reader. It was signed "Arthur." Others, "Ken," and I would like to share it with you.

If a child lives with criticism he learns to condemn. If a child lives with hostility he learns to fight. If a child lives with fear he learns to be apprehensive. If a child lives with pity he learns to feel sorry for himself. If a child lives with jealousy he learns to hate. If a child lives with encouragement he learns to be confident. If a child lives with praise he learns to be appreciative. If a child lives with acceptance he learns to love. If a child lives with approval he learns to like himself.

If a child lives with recognition he learns to have a goal. If a child lives with fairness he learns justice. If a child lives with honesty he learns what truth is. If a child lives with friendliness he learns that the world is a nice place in which to live.

**DEAR ANN LANDERS:** I'm a Navy wife whose husband is on a Polaris submarine riding the sixth patrol. My man is gone for 14 weeks and is home for 10 weeks. My two children are in school so they don't require much time or attention. I read, sew, clean, shop, bowl, swim, watch TV and go to the movies but still I get lonely, especially for male companionship. It is no secret that some Navy wives run around. Everyone knows who these

profiles, my dear. This is what separates the girls from the women.

**DEAR ANN:** I was disappointed in your all-out jinxed-for dancing schools. You said, "Take that 11-year-old kid out of that silly dancing school and put him in a YMCA swimming class." Just because the kids got into a kissing game at a party for the dancing class was no reason to ban-strap the school. Where were the parents when this foolishness was going on? It is their fault, not the fault of the dancing school.

Please set the record straight. Thank you.

**STILL BOILING**

Dear Boiling: Dancing is fun, lovely, beautiful, ethical, healthy, and I do it myself. But I am NOT in favor of 11-year-old boys taking lessons in ballroom dancing. It puts youngsters in an adult type of setting which is unnatural.

You are right, however, in saying the parents and not the school were to blame for that "Heaven or Hell" game. Those kids should not have been without adult supervision.

If excessive drinking is wrecking your health or destroying someone you love, send for ANN LANDERS' booklet, "Help For The Alcoholic," enclosing with your request 20 cents in coin and a long, self-addressed, stamped envelope.

## Topekans To Picnic

Are you from Topeka, Kansas? If you are, you're invited to the reunion Topekans in San Diego have slated for Saturday, Nov. 16 at the Pepper Grove in Balboa Park. Bring your own picnic lunch and be there by 12:30 p.m. to greet old friends and meet new ones. Coffee will be furnished.

Dear prizes will be awarded the youngest baby, to the couple married the longest and to the family having traveled the longest distance to attend.

**SEATTLE**—Korea is to have a Nylon filament plant by 1965.

**FOR THE BEST FESTIVE TURKEY ANYTIME FREE BOOKLET!**

**TURKEY IS YOUR BEST MEAT BUY!**

COVERS: COOKING, SELECTION, TRUSSING, TOASTING, RECIPES

Best in the world turkey for meat here

**Mr. Callahan's BLESSING**

Mr. Callahan, Turkey House, 343 E. Olive, Room 1, Corl. Phone and Turkey Hen House

NAME \_\_\_\_\_ PHONE \_\_\_\_\_

CITY \_\_\_\_\_ STATE \_\_\_\_\_

# PAY TO THE ORDER OF YOU... 15¢

**Fels and Company**  
SPECIAL HOME-MAKER DIVIDEND CHECK

734 1/2 Street and Walnut  
PHILADELPHIA NATIONAL BANK  
PHILADELPHIA, PA.

ORDER OF: *Mrs. DeLora + 15/00*

NOT GOOD AFTER MARCH 31, 1964

## SPECIAL 15¢ HOMEMAKER DIVIDEND CHECK IN EVERY SPECIALLY-MARKED BOX

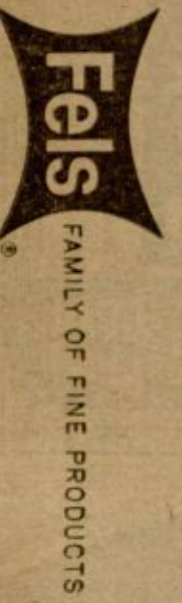
Deposit 15¢ check at your bank or spend it on anything you want! Here's an extra dividend from Fels & Company to remind you of these extra dividends you get every time you use Instant Fels.

**BUILT-IN FABRIC SOFTENER!** You get a soft wash without the bother or expense of adding a fabric softener.

**FRESHER-SMELLING CLOTHES!** No matter whether laundry is dried outdoors or indoors, clothes dry with a fresh, clean outdoor aroma.

**DEEP-DOWN CLEANING!** Everything in the family laundry—sheets, towels, shirts, even grimy playclothes come out cleaner and softer when washed in Instant Fels.

**NATURAL INGREDIENTS!** Instant Fels is real soap. That's why it will not contaminate water supply or cause detergent foam in streams or cesspools.



**BUY INSTANT FELS TODAY! GET HOMEMAKER DIVIDEND CHECK FOR 15¢... AND KEEP GETTING EXTRA DIVIDENDS!**

## TWO REASONS WHY SPUN HONEY WAS THE ONLY HONEY TO GO ON THE 1963 MOUNT EVEREST EXPEDITION

*Jim Whittaker, first American to conquer Mount Everest, tested every major brand of American honey before climbing Mount Everest on May 2, 1963. Results of Whittaker's tests: he chose BRADSHAW'S SPUN HONEY.*

"When you're climbing 29,028 feet of tough mountain," says Jim Whittaker, "everything has to be just right. Especially your food. We chose SPUN Honey for our assault on Everest for two important reasons." **MORE ENERGY PER OUNCE** "Believe it or not," says Whittaker, "honeys vary greatly in the amount of energy per ounce. It's a matter of moisture content, actually. And SPUN Honey has less moisture—and therefore more energy—per ounce than any other honey we tested." **SPUN IS EASY TO HANDLE** We also needed a honey that was easy to handle—one that wouldn't harden or soften too much under conditions of heat or extreme cold. SPUN's semi-solid consistency made it ideal for our purpose. **INCREDIBLE, IT'S SPREADABLE!** This same quality—spreadability—is what makes SPUN ideal as a no-run, no-drip spread in the home. You don't have to climb Mount Everest to appreciate SPUN Honey's easy spreadability. SPUN won't run or harden—always stays smooth and spreadable. It is 100% pure, natural mountain honey in the easiest-to-handle form.

●●● **BRADSHAW ALSO PACKS 3 BEARS BRAND LIQUID HONEY** ●●●

**GET YOUR AMERICAN MOUNT EVEREST T SHIRT** for your little mountain climbers. A real bargain—tough wearing, 3 colors, very handsome. Only 75¢ with a lid from **BRADSHAW'S SPUN**, or side label from **3 BEARS HONEY**.

**HANDY ORDER BLANK**

SIZE  S  M  L (Boys' sizes)

NAME \_\_\_\_\_

ADDRESS \_\_\_\_\_

CITY \_\_\_\_\_ ZONE STATE \_\_\_\_\_

Mail with Lid or Label & 75¢  
To: SPUN HONEY  
WENDELL, IDAHO

Offer expires June 30, 1964.