

# COUNCIL HEARS NEGRO DEMANDS

## Independent

Thursday, Friday, Sunday — 50c a month — 10c a copy  
THURSDAY, AUGUST 1, 1963



POSTERS TELL STORY of United Nations Association opposition of City Council hearing this week. — Photo by Bill Burns

### City Council Decides UNAA Issue Today

The eleventh hour has struck for the City Council to reach a verdict on the United Nations Association lease issue.

When the council convenes this morning it is slated to either approve or reject removal of the lease. Previously the council was stymied by the original standstill motion with the Councilman, Frank Johnson, remaining in the camp of the original standstill motion.

Debate Tuesday had two delegates, but the council was unable to reach a decision. The council is now scheduled for this morning at 10 a. m. in the City Council Chamber.

At this point, the council is expected to reach a decision on the lease issue. The council is expected to reach a decision on the lease issue.

At this point, the council is expected to reach a decision on the lease issue. The council is expected to reach a decision on the lease issue.

At this point, the council is expected to reach a decision on the lease issue. The council is expected to reach a decision on the lease issue.

At this point, the council is expected to reach a decision on the lease issue. The council is expected to reach a decision on the lease issue.



CAPACITY CROWD appeared at this week's small for crowd. Supporters depended on United Nations Association lease hearing, held at El Cortez hotel's International Room because City Council Chambers were too

### Night Visits, Bargaining-in, Draw Scorn

Puzzlement in the Logan Heights area over the rephrasing of certain announcements by the Department of Public Welfare has sparked comment ranging from "I don't understand what they mean" to "However you slice it, it is the same haloney."

### Ramblings of a Scribe

By RUTH A. GREEN  
GOD IN HIS JEWELRY WISDOM took me by surprise. He brought me to the city on July 21. His morning came as quietly as the dawn.

By RUTH A. GREEN  
GOD IN HIS JEWELRY WISDOM took me by surprise. He brought me to the city on July 21. His morning came as quietly as the dawn.

By RUTH A. GREEN  
GOD IN HIS JEWELRY WISDOM took me by surprise. He brought me to the city on July 21. His morning came as quietly as the dawn.

By RUTH A. GREEN  
GOD IN HIS JEWELRY WISDOM took me by surprise. He brought me to the city on July 21. His morning came as quietly as the dawn.

By RUTH A. GREEN  
GOD IN HIS JEWELRY WISDOM took me by surprise. He brought me to the city on July 21. His morning came as quietly as the dawn.

By RUTH A. GREEN  
GOD IN HIS JEWELRY WISDOM took me by surprise. He brought me to the city on July 21. His morning came as quietly as the dawn.

By RUTH A. GREEN  
GOD IN HIS JEWELRY WISDOM took me by surprise. He brought me to the city on July 21. His morning came as quietly as the dawn.

By RUTH A. GREEN  
GOD IN HIS JEWELRY WISDOM took me by surprise. He brought me to the city on July 21. His morning came as quietly as the dawn.



LATIN BEAUTIES pose smartly before four- Mario Anton, Aldo Sanchez, the 1962-63 Latin Conference room in Balboa Park at Queen Marie Casino, Efrer Villanueva, Yolanda Carrillo and Sonia Pulhizy.

### Labor Chief Takes Steps To Wipe Out Hiring Bias

WASHINGTON, D. C. — Secretary of Labor W. W. Willard Wirtz has announced new steps on the part of the Department of Labor to assure that the 1,900 local offices of the Federal-State Employment Service are operated on a racially integrated and non-discriminatory basis.

Under the amendment, three subsections will be added to Section 604.8, Chapter V, titled "Service to Minority Groups."

These relate to equal counseling, testing, selection, and referral services to employers providing relatives to race, creed, color, or national origin, and to State Employment Service operations, with Fair Employment Practices or Anti-Discrimination authorities.

The changes have been announced in General Administration Letter No. 711 of the Department's Bureau of Employment Security. The letter requires the states compliance with the new amendment, and restates an earlier order requiring non-discriminatory personnel practices throughout the service.

About 15,000 new jobs are needed each year to keep up with the growing population of San Diego, says Julius Jensen, city industrial development consultant, who predicts that this expansion will come from industry already in the area.

BELOW OLYMPUS By Interlandi

BELOW OLYMPUS By Interlandi

BELOW OLYMPUS By Interlandi



"As one young American to another, I'd like to apologize for some of the members of my race!"

### Spokesman Suggests Solution

Uncle Tom Dead, Debt Unpaid, Says Speaker

By SHERMAN S. SKEETE  
Independent Staff Writer

Due to the presentation of Joshua Von Wolfolk before the City Council this week, it is likely that efforts are being made to impose stricter requirements for taxpayers to air grievances before the city fathers.

After the fanfare accorded the prospect of hearing from Dennis V. Allen of the Race Relations Committee, publicity seemed to peter to a lowebb when it was known that correction was attempted concerning certain statements.

It is understood that the City Manager rather than the City Clerk will screen applicants and possibly eliminate what may be considered unwarranted criticism.

IN REPRESENTING the 30-minute "response" Von Wolfolk began by explaining the basic economic, political, cultural, and psychological problems confronting black people in America.

A WEIKER AGO, before the City Council, Allen had asserted, "There is no racial discrimination in San Diego."

At this week's session, contrary to general expectation, Von Wolfolk adopted a "response" attitude and his remarks were apt.

"The Afro-American Association aims to free the mind of the black man from the shackles of inferiority by way of teaching and encouraging racial consciousness and pride in his history, culture and heritage," he said.

"The day of the Uncle Tom is dead. At this point Von Wolfolk characterized Allen, Harwell Ragsdale, Percy Steble and (Continued on Page 3)

BULLETIN

Supervisor Judge David Coleman of Los Angeles handed down judgments in the case of eleven black Muslims who it is alleged fled on April 27, 1963.

At that time, one Muslim was killed, six wounded and seven probationers were injured outside the Mosque.

An all-white jury acquitted three defendants and found the others guilty after eight days of deliberation.

Terms of from ninety days to one year plus probation were handed Elmer Carl Jr., 30; Robert Lewis Roger, 19; William Rogers, 27; Randolph Sidle, 31; Charles Henry Zeigler, 30; Monroe Elvin Jones, no. 36; and Roosevelt Walker, 27.

Sentences ranging from one-to-five were meted out to Robert L. Baker, 38; Arthur Coleman Jr., 27; Fred Jerges, 47; 24 and Nathaniel Rivers, 37.

The latter group had been accused of assault.

### Did You Hear Say?

By Benjamin Rivera



Did you hear say that six chapters (Luzpe Nanyly, Ray of course, does not include those suspected of fraud. There will continue to be intensive efforts to detect and prosecute fraud wherever it may exist. Detroit

He went on to say, inevitably, we thank all of you. We feel the Gloyd Leason Green Memorial Campship Fund, established at the Southeast YMCA, is a great honor to Gloyd who was so interested in culturally deprived children. The fund will help carry on his interests and will be a perpetual one. Anyone wishing to contribute to it may do so. The Southeast YMCA is located at 151 N. 54th St.

WE ARE GRATEFUL, and we thank all of you. We feel the Gloyd Leason Green Memorial Campship Fund, established at the Southeast YMCA, is a great honor to Gloyd who was so interested in culturally deprived children. The fund will help carry on his interests and will be a perpetual one. Anyone wishing to contribute to it may do so. The Southeast YMCA is located at 151 N. 54th St.

WE ARE GRATEFUL, and we thank all of you. We feel the Gloyd Leason Green Memorial Campship Fund, established at the Southeast YMCA, is a great honor to Gloyd who was so interested in culturally deprived children. The fund will help carry on his interests and will be a perpetual one. Anyone wishing to contribute to it may do so. The Southeast YMCA is located at 151 N. 54th St.

WE ARE GRATEFUL, and we thank all of you. We feel the Gloyd Leason Green Memorial Campship Fund, established at the Southeast YMCA, is a great honor to Gloyd who was so interested in culturally deprived children. The fund will help carry on his interests and will be a perpetual one. Anyone wishing to contribute to it may do so. The Southeast YMCA is located at 151 N. 54th St.

WE ARE GRATEFUL, and we thank all of you. We feel the Gloyd Leason Green Memorial Campship Fund, established at the Southeast YMCA, is a great honor to Gloyd who was so interested in culturally deprived children. The fund will help carry on his interests and will be a perpetual one. Anyone wishing to contribute to it may do so. The Southeast YMCA is located at 151 N. 54th St.

WE ARE GRATEFUL, and we thank all of you. We feel the Gloyd Leason Green Memorial Campship Fund, established at the Southeast YMCA, is a great honor to Gloyd who was so interested in culturally deprived children. The fund will help carry on his interests and will be a perpetual one. Anyone wishing to contribute to it may do so. The Southeast YMCA is located at 151 N. 54th St.

WE ARE GRATEFUL, and we thank all of you. We feel the Gloyd Leason Green Memorial Campship Fund, established at the Southeast YMCA, is a great honor to Gloyd who was so interested in culturally deprived children. The fund will help carry on his interests and will be a perpetual one. Anyone wishing to contribute to it may do so. The Southeast YMCA is located at 151 N. 54th St.

WE ARE GRATEFUL, and we thank all of you. We feel the Gloyd Leason Green Memorial Campship Fund, established at the Southeast YMCA, is a great honor to Gloyd who was so interested in culturally deprived children. The fund will help carry on his interests and will be a perpetual one. Anyone wishing to contribute to it may do so. The Southeast YMCA is located at 151 N. 54th St.

WE ARE GRATEFUL, and we thank all of you. We feel the Gloyd Leason Green Memorial Campship Fund, established at the Southeast YMCA, is a great honor to Gloyd who was so interested in culturally deprived children. The fund will help carry on his interests and will be a perpetual one. Anyone wishing to contribute to it may do so. The Southeast YMCA is located at 151 N. 54th St.

WE ARE GRATEFUL, and we thank all of you. We feel the Gloyd Leason Green Memorial Campship Fund, established at the Southeast YMCA, is a great honor to Gloyd who was so interested in culturally deprived children. The fund will help carry on his interests and will be a perpetual one. Anyone wishing to contribute to it may do so. The Southeast YMCA is located at 151 N. 54th St.

WE ARE GRATEFUL, and we thank all of you. We feel the Gloyd Leason Green Memorial Campship Fund, established at the Southeast YMCA, is a great honor to Gloyd who was so interested in culturally deprived children. The fund will help carry on his interests and will be a perpetual one. Anyone wishing to contribute to it may do so. The Southeast YMCA is located at 151 N. 54th St.

WE ARE GRATEFUL, and we thank all of you. We feel the Gloyd Leason Green Memorial Campship Fund, established at the Southeast YMCA, is a great honor to Gloyd who was so interested in culturally deprived children. The fund will help carry on his interests and will be a perpetual one. Anyone wishing to contribute to it may do so. The Southeast YMCA is located at 151 N. 54th St.

### Minister Honored

By Sherman S. Skeete

The Rev. S. M. Lockridge of Calvary Baptist Church has been honored during the past four Sundays with "appreciation sermons" for his 11 years with the church.

Guests, churches, last Sunday were New Hope Fellowship Baptist, Mt. Sinai Baptist, Mt. Zion Baptist and Bethel Baptist. Dr. Charles Hampton was guest speaker, accompanied by Rev. Wanda Banks secretary of the church.

Honored guests included Dr. Jack O'Neil of Southern Baptist Convention and director of the work of the national convention. The Rev. Lockridge and his (Continued on Page 2)

Honored guests included Dr. Jack O'Neil of Southern Baptist Convention and director of the work of the national convention. The Rev. Lockridge and his (Continued on Page 2)

Honored guests included Dr. Jack O'Neil of Southern Baptist Convention and director of the work of the national convention. The Rev. Lockridge and his (Continued on Page 2)

Honored guests included Dr. Jack O'Neil of Southern Baptist Convention and director of the work of the national convention. The Rev. Lockridge and his (Continued on Page 2)

Honored guests included Dr. Jack O'Neil of Southern Baptist Convention and director of the work of the national convention. The Rev. Lockridge and his (Continued on Page 2)

Honored guests included Dr. Jack O'Neil of Southern Baptist Convention and director of the work of the national convention. The Rev. Lockridge and his (Continued on Page 2)

Honored guests included Dr. Jack O'Neil of Southern Baptist Convention and director of the work of the national convention. The Rev. Lockridge and his (Continued on Page 2)

Honored guests included Dr. Jack O'Neil of Southern Baptist Convention and director of the work of the national convention. The Rev. Lockridge and his (Continued on Page 2)

Honored guests included Dr. Jack O'Neil of Southern Baptist Convention and director of the work of the national convention. The Rev. Lockridge and his (Continued on Page 2)

Honored guests included Dr. Jack O'Neil of Southern Baptist Convention and director of the work of the national convention. The Rev. Lockridge and his (Continued on Page 2)

Honored guests included Dr. Jack O'Neil of Southern Baptist Convention and director of the work of the national convention. The Rev. Lockridge and his (Continued on Page 2)

Honored guests included Dr. Jack O'Neil of Southern Baptist Convention and director of the work of the national convention. The Rev. Lockridge and his (Continued on Page 2)

Honored guests included Dr. Jack O'Neil of Southern Baptist Convention and director of the work of the national convention. The Rev. Lockridge and his (Continued on Page 2)

BELOW OLYMPUS By Interlandi





FAMILY OF THE WEEK—Dr. and Mrs. Nolan Johnson with two-year-old son and six-year-old daughter. Photo by Sherman S. Steeler.

# FAMILY NEWS

## of the week in brief

By RUTH GREEN

Our family of the week are the 14th generation Californians, Dr. and Mrs. Nolan Johnson, who until moving to San Diego two years ago called Los Angeles home.

Nolan, six feet and seven inches in height, was a star athlete on the varsity basketball team while a student at UCLA where he won many honors. He graduated from UCLA and Meharry Medical School in Nashville, Tenn., and selected the San Diego County Hospital as the place to do his internship, after having spent many delightful summers in San Diego visiting his maternal aunt, Mrs. Jack J. Kimbrough, and family. "Dr. Nolan" as he is called by his intimate friends, is in his second year residence in a surgery at the same hospital, and after the completion of his training, from all indications this will continue to be home.

IN 1938, OIR TALL hand, soon doctor married pretty and talented Caroline Coleman, daughter of Dr. and Mrs. John Coleman of Los Angeles. At the time Caroline was a student at Stanford University with goals already set to become an engineer. She has since earned a Master of Science degree from Stanford and is one of the few women thermodynamic engineers employed at General Dynamics/Astronautics.

SINCE THE PROFESSIONS of Nolan and Carole are so demanding, they have very little leisure time. They do enjoy entertaining small, intimate groups where word-of-mouth jobs can be openly and honestly discussed. They hobnob to the reading and listening to music of all kinds.

For the moment, they are involved in the study of Negro history, a subject about which they say they know very little. Children? Oh, yes, they plan to have a family, when they are more permanently settled... the center of attention in the home now is "Puffin," a white Persian kitten, who pretty much dominates the scene.

**Bought for Safety**  
IMPERIAL BEACH—A safety boat purchased by the Healey Tibbitts Construction Co. will go into operation at the \$300,000 pier being built by the company here.

**ATTENTION:**  
HOTEL MANAGERS, MOTEL MANAGERS, APARTMENT HOUSE OWNERS, DO-IT-YOURSELF CARPENTERS and WISE SHOPPERS

## Council Hears Demands

(Continued from Page 1)

some local preachers as "Uncle Tom's."  
Mayor Charles Dull rippled his gravel as he told the speaker to stick to his original subject.

Continuing his line of reasoning, Von Wolford blasted the white man's idea of Negro leadership.  
"In a cracker town like San Diego, what do you really know about the Negro who washes your dishes, feeds your baby and mows your lawn?" he asked. "You don't mix with him socially and you don't know his dreams."

**DECLARING THAT** there is a debt outstanding on behalf of the Negro, Von Wolford reminded "At the time of emancipation, Lincoln promised the slaves 20 acres of land and a mule. That promise was never kept. We have no land and no jobs today."

**SO WHEN YOU ASK** for statistics on discriminatory practices, you couldn't be satisfied. You created the statistics and the ground rules to maintain them.

"Today, there is a new Negro who is not interested in what the white man thinks. He is only interested in what he thinks of himself. And I may assure you, we are going to act according to what we think and not by the rules you've made." In his demand that the black man share in the power structure of this city, he related to the council that non-white people on the global scene represent the majority and that the eyes of these people are fixed, by the act of American against the Negro, the treatment they may expect.

**HE CONTINUED,** beseeching, "This is not a Negro problem, other than it is the Negro who suffers. It is a white man's problem which he has brought upon himself, and if he doesn't solve it promptly, it will disintegrate him."

**HE SUGGESTED** four methods to stem the tide of discrimination: Preferential job opportunities both in hiring and training; A share in the San Diego power structure; Enforcement of a policy that the Police Department "start treating black citizens like human beings and not like dogs," and the formation of a Human Relations Commission.

In conclusion, he warned about the manipulation of news by the press which, he charged, does delete passages and distort his conservative. He said that this is a disservice paying around is a disservice to the American people who are going to find out, when the terrible starts, that they have been deceived.

"Forget the American dream," he said, "our motto of the hand of the free and the wheel of the brave should be labeled 'white only.'"

To the accompaniment of a burst of applause he threatened, "If you can't do the right, we'll get on with the revolution."

**CHULA VISTA**—In a semi-annual police auction of unclaimed items, 29 bicycles, a number of bicycle parts, sleeping bags and small sporting equipment were auctioned this week. Bicycles sold as low as \$2.

## Accolades Stated for 'Mrs. Navy'

NATIONAL CITY — Wives of Navy men will be included in ceremonies during the Sixth Annual Salute to Navy Week, Oct. 20-27. For the first year, a Mrs. Navy will be chosen from wives nominated by their families and she will reign over the festivities. Mrs. Edith Sherman, Chamber of Commerce manager, said:

The first baby born to a Navy family during the week will be christened the *Newest Bluejacket* and receive gifts from merchants.

A luncheon honoring the outstanding enlisted man from each Naval installation will begin the week's scheduled activities. Sweeping in ceremonies will be held at a luncheon in Kimball Park on Oct. 23.

A talent contest for Navy men will be held Oct. 24, with the first prize being a dinner at a dance at the Community Center.

Navy bakers will compete in a cake-decorating contest, presiding a barbecue Oct. 26 in the park, at 4 p.m.

Churches of the city will have Naval personnel as guests Sunday, Oct. 27. The visitors will have dinner at the church reception halls afterward on private homes.

The Salute to the Navy Week committee will meet with Navy representatives tomorrow at a luncheon at El Juna restaurant, DeLeon Respublic, chairman, said.

## Oriskany Departs

The attack carrier USS Oriskany, commanded by Capt. Herman Trunn, USN, departs this morning for an extended cruise to the Far East. The 44,000 ton San Diego based carrier is carrying Carrier Air Group 16.

The Salute to the Navy Week committee will meet with Navy representatives tomorrow at a luncheon at El Juna restaurant, DeLeon Respublic, chairman, said.

A talent contest for Navy men will be held Oct. 24, with the first prize being a dinner at a dance at the Community Center.

Navy bakers will compete in a cake-decorating contest, presiding a barbecue Oct. 26 in the park, at 4 p.m.

Churches of the city will have Naval personnel as guests Sunday, Oct. 27. The visitors will have dinner at the church reception halls afterward on private homes.

The Salute to the Navy Week committee will meet with Navy representatives tomorrow at a luncheon at El Juna restaurant, DeLeon Respublic, chairman, said.

A talent contest for Navy men will be held Oct. 24, with the first prize being a dinner at a dance at the Community Center.

Navy bakers will compete in a cake-decorating contest, presiding a barbecue Oct. 26 in the park, at 4 p.m.

Churches of the city will have Naval personnel as guests Sunday, Oct. 27. The visitors will have dinner at the church reception halls afterward on private homes.

The Salute to the Navy Week committee will meet with Navy representatives tomorrow at a luncheon at El Juna restaurant, DeLeon Respublic, chairman, said.

A talent contest for Navy men will be held Oct. 24, with the first prize being a dinner at a dance at the Community Center.

Navy bakers will compete in a cake-decorating contest, presiding a barbecue Oct. 26 in the park, at 4 p.m.

Churches of the city will have Naval personnel as guests Sunday, Oct. 27. The visitors will have dinner at the church reception halls afterward on private homes.

The Salute to the Navy Week committee will meet with Navy representatives tomorrow at a luncheon at El Juna restaurant, DeLeon Respublic, chairman, said.

A talent contest for Navy men will be held Oct. 24, with the first prize being a dinner at a dance at the Community Center.

Navy bakers will compete in a cake-decorating contest, presiding a barbecue Oct. 26 in the park, at 4 p.m.

Churches of the city will have Naval personnel as guests Sunday, Oct. 27. The visitors will have dinner at the church reception halls afterward on private homes.

## Tour Departing

There is just time to sign on The Independent-Ambler Holiday tour to Hawaii which sets off next Wednesday for the Paradise Islands.

The 10-day tour is designed for comfort and a minimum of waste time with something to do—and a free time—whether it is touring the verdant islands or dining on the exquisite cuisine of the islands or seeing such sights as the large pineapple canneries or Pearl Harbor.

Entire cost of the tour, which travels by United Airlines DC-8 jet, is \$398. For further information, clip and mail coupon on this page.

**Presumed Dead**  
Scott Callison, 61, an El Cajon auto shop owner, is missing and presumed dead at Jackson Lake, in the Grand Teton National Park, Wyoming. He disappeared while fishing. His speared boat was found later.

**Command Changes**  
Lt. Carl Patrick, USN, will relieve Lt. K. J. Collins, USN, as commanding officer of Flag Administrative Unit (FAIU), Commander Naval Air Force, Pacific Fleet, tomorrow at the \$300,000 pier being built by the company here.

**200 Convening**  
The annual state conference of Plasterers and Cement Masons at the U.S. Grant Hotel tomorrow and Saturday is expected to draw about 200 delegates.

**\$16,300 Netted**  
More than \$16,300 was raised by the "Children's Hour" for the cystic fibrosis research fund this week throughout San Diego County, doubling the amount collected last year.

**Cops Try Speakers**  
Police used loud-speakers to find the mother of a boy injured by an auto this week. The child, Calvin Daniel, 4, 2814 Cole Dr., was unidentified until loud-speakers drew his mother to the scene.

**Presumed Dead**  
Scott Callison, 61, an El Cajon auto shop owner, is missing and presumed dead at Jackson Lake, in the Grand Teton National Park, Wyoming. He disappeared while fishing. His speared boat was found later.

**Command Changes**  
Lt. Carl Patrick, USN, will relieve Lt. K. J. Collins, USN, as commanding officer of Flag Administrative Unit (FAIU), Commander Naval Air Force, Pacific Fleet, tomorrow at the \$300,000 pier being built by the company here.

**200 Convening**  
The annual state conference of Plasterers and Cement Masons at the U.S. Grant Hotel tomorrow and Saturday is expected to draw about 200 delegates.

**\$16,300 Netted**  
More than \$16,300 was raised by the "Children's Hour" for the cystic fibrosis research fund this week throughout San Diego County, doubling the amount collected last year.

**Cops Try Speakers**  
Police used loud-speakers to find the mother of a boy injured by an auto this week. The child, Calvin Daniel, 4, 2814 Cole Dr., was unidentified until loud-speakers drew his mother to the scene.

**Presumed Dead**  
Scott Callison, 61, an El Cajon auto shop owner, is missing and presumed dead at Jackson Lake, in the Grand Teton National Park, Wyoming. He disappeared while fishing. His speared boat was found later.

**Command Changes**  
Lt. Carl Patrick, USN, will relieve Lt. K. J. Collins, USN, as commanding officer of Flag Administrative Unit (FAIU), Commander Naval Air Force, Pacific Fleet, tomorrow at the \$300,000 pier being built by the company here.

**200 Convening**  
The annual state conference of Plasterers and Cement Masons at the U.S. Grant Hotel tomorrow and Saturday is expected to draw about 200 delegates.

**\$16,300 Netted**  
More than \$16,300 was raised by the "Children's Hour" for the cystic fibrosis research fund this week throughout San Diego County, doubling the amount collected last year.

## Very Special for back-to-school sewing...

Very Special for back-to-school sewing...

Very Special for back-to-school sewing...

Very Special for back-to-school sewing...

Very Special for back-to-school sewing...

Very Special for back-to-school sewing...

Very Special for back-to-school sewing...

Very Special for back-to-school sewing...

Very Special for back-to-school sewing...

Very Special for back-to-school sewing...

Very Special for back-to-school sewing...

Very Special for back-to-school sewing...

Very Special for back-to-school sewing...

Very Special for back-to-school sewing...

Very Special for back-to-school sewing...

Very Special for back-to-school sewing...

Very Special for back-to-school sewing...

Very Special for back-to-school sewing...

## Why Pay More?

Why Pay More?

Why Pay More?

Why Pay More?

Why Pay More?

Why Pay More?

Why Pay More?

Why Pay More?

Why Pay More?

Why Pay More?

Why Pay More?

Why Pay More?

Why Pay More?

Why Pay More?

Why Pay More?

Why Pay More?

Why Pay More?

Why Pay More?

## ATTENTION:

ATTENTION:

ATTENTION:

ATTENTION:

ATTENTION:

ATTENTION:

ATTENTION:

ATTENTION:

ATTENTION:

ATTENTION:

ATTENTION:

ATTENTION:

ATTENTION:

ATTENTION:

ATTENTION:

ATTENTION:

ATTENTION:

ATTENTION:

## FACTORY SURPLUS!

FACTORY SURPLUS!

FACTORY SURPLUS!

FACTORY SURPLUS!

FACTORY SURPLUS!

FACTORY SURPLUS!

FACTORY SURPLUS!

FACTORY SURPLUS!

FACTORY SURPLUS!

FACTORY SURPLUS!

FACTORY SURPLUS!

FACTORY SURPLUS!

FACTORY SURPLUS!

FACTORY SURPLUS!

FACTORY SURPLUS!

FACTORY SURPLUS!

FACTORY SURPLUS!

FACTORY SURPLUS!

## 5 P.C. DINETTE SETS

5 P.C. DINETTE SETS

5 P.C. DINETTE SETS

5 P.C. DINETTE SETS

5 P.C. DINETTE SETS

5 P.C. DINETTE SETS

5 P.C. DINETTE SETS

5 P.C. DINETTE SETS

5 P.C. DINETTE SETS

5 P.C. DINETTE SETS

5 P.C. DINETTE SETS

5 P.C. DINETTE SETS

5 P.C. DINETTE SETS

5 P.C. DINETTE SETS

5 P.C. DINETTE SETS

5 P.C. DINETTE SETS

5 P.C. DINETTE SETS

5 P.C. DINETTE SETS

## 188 Wool Carpet

188 Wool Carpet

188 Wool Carpet

188 Wool Carpet

188 Wool Carpet

188 Wool Carpet

188 Wool Carpet

188 Wool Carpet

188 Wool Carpet

188 Wool Carpet

188 Wool Carpet

188 Wool Carpet

188 Wool Carpet

188 Wool Carpet

188 Wool Carpet

188 Wool Carpet

188 Wool Carpet

188 Wool Carpet

## 225 Luxurious Candy Stripe Carpet

225 Luxurious Candy Stripe Carpet

225 Luxurious Candy Stripe Carpet

225 Luxurious Candy Stripe Carpet

225 Luxurious Candy Stripe Carpet

225 Luxurious Candy Stripe Carpet

225 Luxurious Candy Stripe Carpet

225 Luxurious Candy Stripe Carpet

225 Luxurious Candy Stripe Carpet

225 Luxurious Candy Stripe Carpet

225 Luxurious Candy Stripe Carpet

225 Luxurious Candy Stripe Carpet

225 Luxurious Candy Stripe Carpet

225 Luxurious Candy Stripe Carpet

225 Luxurious Candy Stripe Carpet

225 Luxurious Candy Stripe Carpet

225 Luxurious Candy Stripe Carpet

225 Luxurious Candy Stripe Carpet

## 49c Padding

49c Padding

49c Padding

49c Padding

49c Padding

49c Padding

49c Padding

49c Padding

49c Padding

49c Padding

49c Padding

49c Padding

49c Padding

49c Padding

49c Padding

49c Padding

49c Padding

49c Padding

## 29.95 Large 30x40x85

29.95 Large 30x40x85

29.95 Large 30x40x85

29.95 Large 30x40x85

29.95 Large 30x40x85

29.95 Large 30x40x85

29.95 Large 30x40x85

29.95 Large 30x40x85

29.95 Large 30x40x85

29.95 Large 30x40x85

29.95 Large 30x40x85

29.95 Large 30x40x85

29.95 Large 30x40x85

29.95 Large 30x40x85

29.95 Large 30x40x85

29.95 Large 30x40x85

29.95 Large 30x40x85

29.95 Large 30x40x85

## 4344 Home Ave.

4344 Home Ave.

4344 Home Ave.

4344 Home Ave.

4344 Home Ave.

4344 Home Ave.

4344 Home Ave.

4344 Home Ave.

4344 Home Ave.

4344 Home Ave.

4344 Home Ave.

4344 Home Ave.

4344 Home Ave.

4344 Home Ave.

4344 Home Ave.

4344 Home Ave.

4344 Home Ave.

4344 Home Ave.



## Green Garden Needs 'Spice' Of Contrasts

You see gardens occasionally in which monotony reigns as king. They are green, green and more green, without a single annual or shrub to pick things up with their bloom.

Now there's nothing wrong with an all-evergreen garden. If a man lacks time to putter with such niceties as annuals and perennials, but let's plant evergreens with some color to them... many-be even some that occasionally bloom. You can find any number of shrubs which give you colorful blossoms and demand no attention in return. Like oleander, may-be, or rock-roses. A local member of the California Association of Nurserymen can show you many other low-maintenance or no-maintenance shrubs.

But back to the idea of contrasting colors from evergreen foliage alone. There is a great diversity in the color of "evergreen" foliage. Some of it is on the reddish or purple side. Some is blue-gray in tone and some is silvery gray. Here's the making of some interesting color contrasts whether we have much bloom or not. And if you stretch the point to include a deciduous shrub or tree, you have even more variety.

Gardeners who care will carry this idea of contrasting colors into all phases of gardening. In the border, they will pair a red Japanese Maple or against the blue-green of a dwarf conifer such as White's Silver King Juniper. Or on a larger scale, they will plant a gray-green Pinyon Apple next to a purple flowered Bush. In the flower border, they contrast the blue Lily of the Nile with some fiery Red Hot Pokers, blue violas with yellow violas, white stock with pink snapdragons—always on the lookout for pleasing color combinations.

Such practice adds interest not only to the garden, but to gardening, for the planning itself becomes interesting.

For the benefit of those who would try their hand at this garden game, the C.A.N. offers the following list of shrubs and plants which give you color in their foliage alone:

For gray tones try the old-fashioned English Lavender with its fragrant spikes of lavender bloom. Or try Bush Germander, either as an individual shrub in the border or as a silvery-gray hedge. On a sunny bank, or in a hanging container, the trailing Berthollet Lotus adds a nice gray pattern or refined foliage, and for tall backgrounds, the Olive tree is about as gray as any tree can be.

For red or purple tones, we've already mentioned two—the red Japanese Maples and the purple Hopeday Bush. Try also Fuchsia, Begonia, which combine well incidentally, with Dusky Miller, and Ruby Glow Leplopernum, a member of the tea tree family with striking purple stems and purple-red flowers. The Showy Hebe or Veronica, if you prefer, has an overall purplish cast to it which derives from the purple veins in the leaves. Japanese Pinks, of course, add big splashes of purple foliage to California gardens.

Gardeners should guard against planting too much in the way of colored foliage plants, for after all, green is the basic color of nature. Here and there, however, they break the monotony and add more interest to the landscape.

## Picnic Planning Makes More Fun

All picnics involve planning what to take and how to get it there. Ways to make the Grand Picnic more fun and more manageable, as well as the menus and recipes, are featured in the August issue of Sunset.

For these occasions you can have steaks broiled on the barbecue, a salad to toss, soup, steaming hot, melon ice cold. A camp cot loaded with picnic items is surprisingly easy to carry; at the beach the cot serves as a table and keeps food above the sand. Two people can easily tote an assortment of baskets and vacuum jug hung on a closet pole.

Rucksacks and back packs leave the picnickers' hands free for climbing. Sunset has menus for each kind of pack and tote meal ranging from a Beach Bunch featuring pineapple-banana, skewers and fresh strawberries, to a Kampack Picnic with chicken tastes, fresh fruit, cheese and chilled wine.

## Dryer's QUALITY HOME FURNISHINGS

3 Big Locations

SAN DIEGO

GROSSMONT CENTER

SOLANA BEACH

## Greatest AUGUST SALE!

### 3-Pc. COLONIAL BEDROOM GROUP with PLASTIC TOPS



NIGHT STAND... \$19

Six Drawer Double Dresser  
Large Size Framed Mirror  
Full or Twin Panel Bed

Finished in Rich Salem Maple

**\$99**

\$129 VALUE!  
\$5 monthly

## Fine Rugs in the Sizes & Colors You Want! All Top Quality Broadloom!

### Special Sale of over

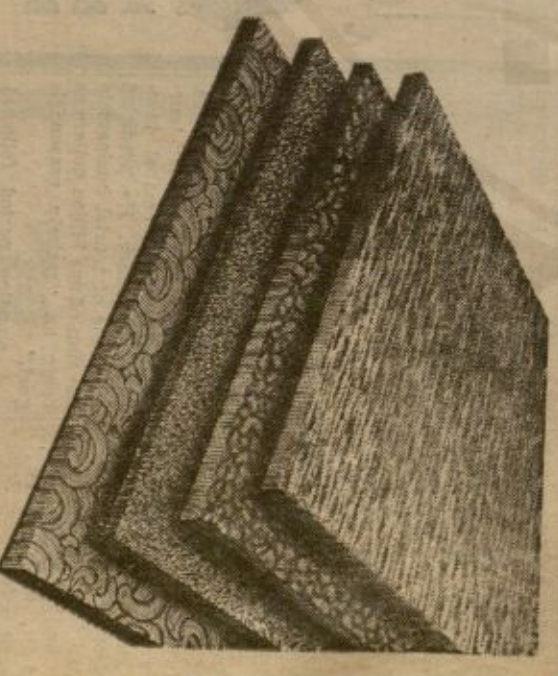
## 100 OVERSIZE RUGS

choice

**\$66**

- Wool pile • Nylon pile
- Nylon and wool pile
- In sizes up to 12'x18'

Amazing Values to \$119!  
Any rug only \$5 monthly!



## YOU PAY ONLY \$6! REGARDLESS OF SIZE!

|                                    |           |
|------------------------------------|-----------|
| Antique gold Tweed, 100% Wool      | 12'x16'   |
| Woodland Tweed, 100% Nylon         | 12'x14'8" |
| Cinnamon, 100% Wool                | 12'x14'   |
| Sandalwood, 100% Wool              | 12'x14'   |
| Pine Tweed, 100% Nylon             | 12'x16'   |
| Nutmeg Stripe, 70% Wool, 30% Nylon | 12'x17'   |
| Sandstone Beige, 100% Nylon        | 12'x15'   |
| Brown Tweed, 100% Nylon            | 12'x17'   |
| Pecantone, 100% Nylon              | 12'x15'   |
| Green and brown, 100% Wool         | 12'x17'   |

### REPEAT OF A ELLOUT!

You'd for it so we went to factory and made and huge special purchase over 100 oversize rugs. Here are just a few these amazing rug buyshy rug, any size only \$6! You'll find just the rug you want in the color you want. Hurry, all are sold prior sale. Guaranteed savings on every rug!

**MAIN FLOOR RUGS LISTED!**

|  |           |
|--|-----------|
| Brown Tweed, 70% Wool, 30% Nylon       | 12'x17'   |
| Spice, 100% Wool                       | 10'x18'   |
| Spanish Gold, 100% Nylon               | 12'x19'8" |
| Turquoise, 100% Cont. Filament Nylon   | 12'x11'6" |
| Pecock, 100% Cont. Filament Nylon      | 12'x11'4" |
| Earth Tweed, 100% Cont. Filament Nylon | 12'x10'   |
| Chiffon Green, 100% Wool               | 9'x16'    |
| Fire Red, 100% Acrylic                 | 12'x15'   |
| Cordovan, 100% Wool                    | 12'x12'   |
| Martini, 100% Wool                     | 12'x13'   |



**SAN DIEGO**  
2400 Kettner Blvd. — 233-6421  
Open Mondays & Fridays, 9 a.m. to 5:30 p.m., daily 9 to 5:30



**SOLANA BEACH**  
243 No. Highway 101 — 755-9317  
Open Mondays & Fridays, 9 a.m. to 5:30 p.m., daily 9 to 5:30



**GROSSMONT CENTER**  
In La Mesa — 465-3111  
Open daily 10 a.m. to 9:30 p.m., Sat. 10 to 6





**CHILDREN LISTEN INTENTLY** to Kathleen Freeman of the San Diego Children's Home which, with the San Diego County Epilepsy Society, will benefit from the "Bowl for Charity" opening of La Mesa Bowl today, starting at 4 p.m. and continuing until 3:30 a.m., on Highway 80 near Fletcher Parkway. Miss Freeman is one of many stage, screen and TV stars who are donating their services to this benefit. Photo by Photography House

## Candidates Meet at Forum, Show Views

El Cajon Boulevard Civic Association gave time to mayor candidates this week at a public hearing at the El Cajon Community Center. Along with an old fashion box lunch social, eleven out of the 18 were present. It was the first major campaign forum for the candidates.

Prior to the time allotted for five minute speeches, applicants cheering, manlyer, supporters for both Murray Good-peter and Joseph P. Goetz. Goetz rounded the hall, wearing campaign hats, carrying black gloves and posters.

James of candidates were pulled from a hat to establish speaking order, with the exception of Allen Hinch and Goodrich who asked to speak in order to have early.

Mich told the audience of 200 persons that he had worked closely with business people of El Cajon Boulevard and East San Diego Merchants Association and had been responsible for removal of parking meters, and had been responsible for the removal of the five cent parking charge. "Older San Diego needs attention and a fine planning commission and a fair share of capital outlay funds," he said. Hinch advocated an international space and science fair for San Diego while building the tourist business in the fastest way to improve the local economy. He also favored the Port Authority, a second port entrance, low level highway to the East and lessening of San Diego's feeling of sub-dependence to Los Angeles.

Kidding Goetz's supporters, Murray Goodpeter said he "found a way to convert" in the audience. He went on to say that he had had fields of success in the financial field and having achieved this goal, he wanted to serve his government. He said he believed that he could represent all segments of the population.

Jack Snyder stated he had a record of 21 years service in politics in Chicago, Ill., and felt California was a state for young people. He said he was confident about the 32,000 unemployed San Diegans. Referring to Jobs and Growth, Snyder criticized it, saying that "it would profit a few."

Hein Cobb stressed her faith in the city manager form of government. "I have researched it and say that this is the high level of service at low cost." She said there were areas needing improvement.

Mrs. Cobb said the San Diego form is not good and the mayor's office needs a strong leadership. To further encourage and develop interest in jobs and industries in San Diego, she said she carries a complete portfolio of details whenever she leaves the city.

Six phases of diversification for San Diego were supported by Harry Porter. They are: industry, tourist trade, agriculture, port development, education and research and recreational attractions such as Mission Bay. "I have heard nothing but gloom for the past two weeks. Let's not fear San Diego," Porter said. He told the group to look at the candidates records and their experience before making a choice.

Server and water cost figures were quoted by Gerald Douglas to illustrate the "unjust taxation imposed by city council tax and again and who have defied the wishes of taxpayers." He said the new city charter was an example of unjust treatment by the taxpayer and called it "bossism in the highest form."

Frank Curran said after hearing all of the candidates speak, he would not vote for any of them. He said that he was "bored" and San Diego "boom town" that he wished to stress one point, "I make no promise. If I become mayor I will work hard."

The largest and most widely attended ceremonies on the opening morning. Major addresses during the annual Clinical Congress of the American College of Surgeons, will be held during the College's semi-annual year in San Francisco, Oct. 25 through Nov. 1. More than 11,000 Fellows of the College will gather to discuss the world's latest developments of surgical developments of benefit to thousands of patients.

Every phase of surgery will be presented during the five-day program, through 208 research reports, ten post-graduate courses, 42 panels in general and specialty fields, 21 clinics, 57 medical films, 12 operative telecasts, and 329 exhibits.

Dr. Loyd Davis, Chicago, president of the College, will inaugurate the 50th anniversary.

## Surgeons to San Francisco For Golden Anniversary

LUKE HALPIN learns underwater secrets of dolphins' fishing grounds in "Flipper," delightful M-G-M production in color which opened last night locally. Chuck Connors stars, Ivan Tors produced. James B. Clark directed. Second feature is "Toran's Three Challenges."



## Bishop Buddy Hosts Catholic Women's Lunch

His Excellency The Most Rev. introduced and reports from the executive board. The Legion of Decency Report was read by Mrs. M. E. Cole. Women for a combined luncheon and business meeting held recently at Alcala Park, San Diego. Highlighting the day's events was the presentation to each member a gift edition of His Excellency's latest book titled "For Thom Also."

Addressing his guests, the Bishop spoke of the great importance of the lay apostolate in assisting the clergy with grade school and P. H. S. of Religion. Mrs. Henry Jones, of Ontario, president of the organization, called the business meeting to order.

New Deaconry presidents were:

**OPEN MONDAY and FRIDAY TIL 9:00 P.M. SEE OUR WINDOWS!**

Shop at Thearle Music Company, and you buy complete! from the courteous attention you receive on shopping to the expert after-sale service always available. (We service everything we sell.) Convenient terms, Thearle private financing, too. AND NOW... parking is no problem downtown... and free, when you buy!

# URGENT!

## SALE ENDS SOON!

# AT THEARLE'S...

# SWEEPING STOREWIDE SAVINGS!

# CLEARANCE SALE!

# PIANOS, NEW & RECONDITIONED

5 days exchange privilege, 90 days free service. HURRY! ALL ITEMS SUBJECT TO PRIOR SALE

**STAR SPECIAL!**  
NEWBY & EVANS  
used upright  
**\$569**

**STAR SPECIAL!**  
NEW MAGNUS  
Chord Organ  
**\$195**

**STAR TV SPECIAL!**  
NEW COLOR TV  
RCA Victor 21" w/v  
w/ \$695, now \$245  
**\$450**

**STAR TV SPECIAL!**  
NEW PORTABLE TV  
DELMONICO, 16" m/b or w/v  
SENTINEL, 21" con., 189.95, 149.95  
ALL ITEMS SUBJECT TO PRIOR SALE

**STAR SPECIAL!**  
NEW RADDIS  
LLOYD 6 1/2 inch  
pedal, 21" w/v  
**\$8.95**

**STAR SPECIAL!**  
SHEET MUSIC  
LLOYD 6 1/2 inch  
pedal, 21" w/v  
**\$8.95**

**STAR SPECIAL!**  
ZIPPER PORTABLE  
several coloristic...  
**48c**

**STAR SPECIAL!**  
CHRISTMAS-IN-JULY  
BOUTIQUE SPECIAL!  
Christmas cards  
and gift wrap  
**50% OFF**

**STAR SPECIAL!**  
NEW RECORDS  
50% OFF

**USED UPRIGHTS**

|                 |      |
|-----------------|------|
| HARDMAN         | 5 75 |
| H. P. NELSON    | 129  |
| SCHERKE         | 129  |
| H. P. NELSON    | 139  |
| LEONARD         | 149  |
| CUMMINGS        | 149  |
| WINSTON         | 149  |
| BRITNERHOFF     | 159  |
| HOWARD          | 159  |
| SONNAR          | 169  |
| PIANO, SCHAEFER | 169  |
| STEINWAY        | 875  |

**NEW SPINETS**

|                    |       |       |
|--------------------|-------|-------|
| WAS NOW            | \$445 | \$454 |
| STALTER, mah.      | 425   | 488   |
| HUNTINGTON, mah.   | 675   | 525   |
| WURZELER, mah.     | 875   | 525   |
| WURZELER, mah.     | 885   | 545   |
| W. P. HAINES, mah. | 885   | 545   |
| CABLE NELSON, mah. | 745   | 595   |
| CABLE NELSON, mah. | 745   | 595   |
| CABLE NELSON, mah. | 745   | 595   |
| FISHER, mah.       | 725   | 675   |
| FISHER, mah.       | 725   | 675   |
| FISHER, mah.       | 725   | 675   |
| FISHER, mah.       | 725   | 675   |
| FISHER, mah.       | 725   | 675   |

**GRANDS**

|                         |       |       |
|-------------------------|-------|-------|
| STAR                    | \$350 | \$349 |
| LESTER                  | 800   | 575   |
| LINDEMAN                | 895   | 595   |
| BRANBACH                | 1350  | 895   |
| KURTZMAN                | 1395  | 995   |
| IMPERIAL                | 1650  | 1295  |
| KIMBALL                 | 1650  | 1295  |
| MASSON & MAMUTH, 5 1/2" | 2295  | 1795  |
| MASSON & MAMUTH, 5 1/2" | 2450  | 1995  |
| KNABE, 5 1/2"           | 2450  | 1995  |
| RAIDWIN, 5 1/2"         | 2450  | 1995  |
| KNABE, 5 1/2"           | 2950  | 2295  |
| KNABE, 5 1/2"           | 2950  | 2295  |
| STEINWAY, 5 1/2"        | 3850  | 2895  |

**NEW STEREO RADIO-PHONOS**

|                     |          |          |
|---------------------|----------|----------|
| FISHER, mah., AM/FM | \$399.95 | \$299.95 |
| FISHER, mah., AM/FM | 695.00   | 399.50   |
| FISHER, mah., AM/FM | 500.00   | 425.00   |
| FISHER, mah., AM/FM | 595.00   | 475.00   |
| FISHER, mah., AM/FM | 695.00   | 495.00   |

**NEW PORTABLE PHONOS**

|                     |         |         |
|---------------------|---------|---------|
| PHONOMASTER, 4 spd. | \$19.95 | \$14.95 |
| PHONOMASTER, 4 spd. | 99.95   | 24.95   |
| PHONOMASTER, 4 spd. | 99.95   | 24.95   |
| PHONOMASTER, 4 spd. | 99.95   | 24.95   |
| PHONOMASTER, 4 spd. | 99.95   | 24.95   |

**NEW TAPES**

|                      |         |
|----------------------|---------|
| LLOYD, mah., battery | \$19.95 |
| LLOYD, mah., battery | 39.95   |
| LLOYD, mah., battery | 86.95   |
| LLOYD, mah., battery | 86.95   |
| LLOYD, mah., battery | 86.95   |

**NEW TAPES**

|                          |         |
|--------------------------|---------|
| MAJESTIC, all-wave, mono | \$19.95 |
| PHILHARMONIC, mono       | 34.95   |
| MAAGNAVOX                | 34.95   |
| MAAGNAVOX                | 34.95   |
| MAAGNAVOX                | 34.95   |
| MAAGNAVOX                | 34.95   |
| MAAGNAVOX                | 34.95   |
| MAAGNAVOX                | 34.95   |
| MAAGNAVOX                | 34.95   |
| MAAGNAVOX                | 34.95   |
| MAAGNAVOX                | 34.95   |

**STAR SPECIAL!**  
NEW RADDIS  
LLOYD 6 1/2 inch  
pedal, 21" w/v  
**\$8.95**

**STAR SPECIAL!**  
SHEET MUSIC  
LLOYD 6 1/2 inch  
pedal, 21" w/v  
**\$8.95**

**STAR SPECIAL!**  
ZIPPER PORTABLE  
several coloristic...  
**48c**

**STAR SPECIAL!**  
CHRISTMAS-IN-JULY  
BOUTIQUE SPECIAL!  
Christmas cards  
and gift wrap  
**50% OFF**

**STAR SPECIAL!**  
NEW RECORDS  
50% OFF

**USED UPRIGHTS**

|                 |      |
|-----------------|------|
| HARDMAN         | 5 75 |
| H. P. NELSON    | 129  |
| SCHERKE         | 129  |
| H. P. NELSON    | 139  |
| LEONARD         | 149  |
| CUMMINGS        | 149  |
| WINSTON         | 149  |
| BRITNERHOFF     | 159  |
| HOWARD          | 159  |
| SONNAR          | 169  |
| PIANO, SCHAEFER | 169  |
| STEINWAY        | 875  |

**NEW SPINETS**

|                    |       |       |
|--------------------|-------|-------|
| WAS NOW            | \$445 | \$454 |
| STALTER, mah.      | 425   | 488   |
| HUNTINGTON, mah.   | 675   | 525   |
| WURZELER, mah.     | 875   | 525   |
| WURZELER, mah.     | 885   | 545   |
| W. P. HAINES, mah. | 885   | 545   |
| CABLE NELSON, mah. | 745   | 595   |
| CABLE NELSON, mah. | 745   | 595   |
| CABLE NELSON, mah. | 745   | 595   |
| FISHER, mah.       | 725   | 675   |
| FISHER, mah.       | 725   | 675   |
| FISHER, mah.       | 725   | 675   |
| FISHER, mah.       | 725   | 675   |
| FISHER, mah.       | 725   | 675   |

**GRANDS**

|                         |       |       |
|-------------------------|-------|-------|
| STAR                    | \$350 | \$349 |
| LESTER                  | 800   | 575   |
| LINDEMAN                | 895   | 595   |
| BRANBACH                | 1350  | 895   |
| KURTZMAN                | 1395  | 995   |
| IMPERIAL                | 1650  | 1295  |
| KIMBALL                 | 1650  | 1295  |
| MASSON & MAMUTH, 5 1/2" | 2295  | 1795  |
| MASSON & MAMUTH, 5 1/2" | 2450  | 1995  |
| KNABE, 5 1/2"           | 2450  | 1995  |
| RAIDWIN, 5 1/2"         | 2450  | 1995  |
| KNABE, 5 1/2"           | 2950  | 2295  |
| KNABE, 5 1/2"           | 2950  | 2295  |
| STEINWAY, 5 1/2"        | 3850  | 2895  |

**NEW STEREO RADIO-PHONOS**

|                     |          |          |
|---------------------|----------|----------|
| FISHER, mah., AM/FM | \$399.95 | \$299.95 |
| FISHER, mah., AM/FM | 695.00   | 399.50   |
| FISHER, mah., AM/FM | 500.00   | 425.00   |
| FISHER, mah., AM/FM | 595.00   | 475.00   |
| FISHER, mah., AM/FM | 695.00   | 495.00   |

**NEW PORTABLE PHONOS**

|                     |         |         |
|---------------------|---------|---------|
| PHONOMASTER, 4 spd. | \$19.95 | \$14.95 |
| PHONOMASTER, 4 spd. | 99.95   | 24.95   |
| PHONOMASTER, 4 spd. | 99.95   | 24.95   |
| PHONOMASTER, 4 spd. | 99.95   | 24.95   |
| PHONOMASTER, 4 spd. | 99.95   | 24.95   |

**NEW TAPES**

|                      |         |
|----------------------|---------|
| LLOYD, mah., battery | \$19.95 |
| LLOYD, mah., battery | 39.95   |
| LLOYD, mah., battery | 86.95   |
| LLOYD, mah., battery | 86.95   |
| LLOYD, mah., battery | 86.95   |

**NEW TAPES**

|                          |         |
|--------------------------|---------|
| MAJESTIC, all-wave, mono | \$19.95 |
| PHILHARMONIC, mono       | 34.95   |
| MAAGNAVOX                | 34.95   |
| MAAGNAVOX                | 34.95   |
| MAAGNAVOX                | 34.95   |
| MAAGNAVOX                | 34.95   |
| MAAGNAVOX                | 34.95   |
| MAAGNAVOX                | 34.95   |
| MAAGNAVOX                | 34.95   |
| MAAGNAVOX                | 34.95   |
| MAAGNAVOX                | 34.95   |



### Contest Has Many Prizes For Children

Children 4 years or younger are invited to enter the annual JayCo. Children's Photograph Contest between now and Sept. 7. More than 270 prizes, including a Caribbean cruise for winner and parents, a swimming pool, and a Rembrandt automobile, will be awarded monthly.

A San Diego-born girl, Cathy Tyler of 3617 E. Acadia Blvd., was fourth prize recipient when in last year's contest.

To enter, a child must be photographed, the May Co. Photo Redefinition between now and Sept. 7, inclusive. A duplicate of the pose selected by parents will be sent to judges with extra charges. All entries will be judged on basis of personality and character, as portrayed in the photograph.

Final selections will be made Monday, Jan. 14, at the JayCo. Photo Redefinition by four judges: They are Hugh Fonda, motion picture stars; Ann Lytine, a city school system clerk; Joanne Woodward, Maureen O'Hara, and Henry Fonda, motion picture stars.



**NATIONAL WINNER** in May Co. photo contest last year was Cathy Tyler of Clairemont, who placed fourth. Contest offers hundreds of prizes.

## Clerk Answers Moms' Questions

Ann Lytine, a city school system clerk, doesn't have to rely on the calendar or the temperature to tell her if it's mid-summer. The telephone tells her.

Miss Lytine is the information clerk who presides over the lobby of the city schools' Education Center. The volume of calls from parents seeking opening-of-school information is picking up, she reports, as it always does at this time.

Most callers seek information about entrance age requirements, registration dates for new students, and school boundaries. Here are the answers to the most frequently asked questions:

To be enrolled in kindergarten this fall, a child must be five years of age on or before December 2, 1963.

To be enrolled in the first grade a child must be six years of age on or before December 2, 1963.

School officials emphasize that this is state law and there can be no exceptions except for certain categories of physically handicapped children.

All elementary pupils enrolling for the first time must present evidence of the date of birth.

A birth certificate is the preferred evidence, but if it cannot be obtained a baptismal certificate, family Bible record, five-year-old insurance policy, or a dated news clipping of a birth announcement may be accepted.

Registration date for all elementary school children enrolling for the first time in the city schools is Thursday, Sept. 12, from 1 to 4:30 p.m. in the neighborhood school of residence.

New junior and senior high school students will register Thursday, Sept. 5, between 8:30 and 11:30 a.m. in the neighborhood school of residence, or during the same hours on Sept. 6, 11 and 12.

All pupils who were in attendance at the end of the 1962-63 school year in June are automatically registered — including those promoted from elementary school to junior high and from junior high to senior high—unless they have moved into a new attendance district.

New residents and other parents who have moved and are not sure of the school of residence should call the Education Center public information desk, 298-4881, extension 200. That's Miss Lytine's number and she has the necessary maps to verify the school of residence for every address in the city.

## Cal-Western Adds to Dorm

Construction is now underway at California Western University of a new \$225,000 addition to the present women's residence hall, according to Dr. William C. Rust, president.

The new 17,000 square-foot addition will be ready for occupancy in the latter part of October. The modern structure, built of wood, stucco, and concrete block, will add 48 rooms for 92 women students. Total resident housing will be available for some 748 students when the addition is completed.

A food lubricant used in the wrong place is a bad lubricant. This is especially true today when several varieties of oil and grease are used in various parts of the car.

## Music Camp in Seventh Year

For the seventh year, Southland Music Camp will give junior high school and high school musicians of San Diego County a week's special music instruction in a summer camp program suited to each age and program group.

Sponsored by El Cajon Valley High School Band and Orchestra Parents' Club, the camp will conduct two sessions at Camp Cuyamaca during August, under the experienced camp and music director of four of San Diego County's school music instructors. It is a non-profit venture. Session I, for junior high school musicians, is an expanded and enlarged program for hand, music camp will give junior high school and high school musicians of San Diego County a week's special music instruction in a summer camp program suited to each age and program group.

Sponsored by El Cajon Valley High School Band and Orchestra Parents' Club, the camp will conduct two sessions at Camp Cuyamaca during August, under the experienced camp and music director of four of San Diego County's school music instructors. It is a non-profit venture. Session I, for junior high school musicians, is an expanded and enlarged program for

San Diego Independent, Thursday, August 1, 1963

# CARPET SALE

## WOOL and NYLON PILE

ONE PRICE INCLUDES ALL

FOAM 1/2" 2.00  
 CARPET 3.99  
 REGUR 5.99  
 NOW ALL FAR

9' x 12 ROOM SIZE REMNANTS 9' x 12 RAYON VISCOSE PILE TWEED RUGS 1.95

100% Nylon Pile with foam back (no flannel).  
 Choose from 100% Nylon or all wool. Fabulous selection, all reduced to clear.

50% OFF 1.95

WE MEASURE, SEW, PAD, INSTALL ANYWHERE  
**CARPET CITY**  
 610 W. Washington  
 MISSION HILLS AREA

OTHER CARPET LOCATIONS: ★ Sherman Oaks ★ Los Angeles ★ Anaheim ★ Long Beach ★ W. Covina

DAILY 9-9, SAT. 9-6, CLOSE SUNDAY  
 FREE ESTIMATES  
**CY 7-1631**

OPEN

**SDSC Expects 1,800 in Summer School Classes**

More than 1,800 students are expected to enroll in San Diego State's Summer Session. Term I, beginning Monday, according to Dr. Manfred H. Schnapp, dean of education and extended services.

Schnapp explained that students who were not enrolled in Term I of Summer Sessions, or who have not made application for Term II should apply at the Admissions Office in the administration building on or before Monday.

Any person who is over 21 years of age, or who has attended college, is eligible to enroll in the three-week term. Term II students may enroll for a maximum of three units of college credit. Late registrars.

Registration for fall semester classes at San Diego Junior College starts Tuesday and will last one week.

Registration will be held at the college, 825 13th Avenue, from 9 a.m. to 2 p.m. for day students and from 4 to 9 p.m. for evening students.

**SDJC's Set To Register**

Registration for fall semester classes at San Diego Junior College starts Tuesday and will last one week.

Registration will be held at the college, 825 13th Avenue, from 9 a.m. to 2 p.m. for day students and from 4 to 9 p.m. for evening students.

**WARRIORS**

**GROSSMONT CENTER ONLY**

**DRESSES**  
 Regular 16.00 to 20.00  
 Regular 23.00 to 30.00  
 Regular 36.00 to 46.00

**KNIT DRESSES**  
 UP TO 1/2 OFF

**GROSSMONT CENTER ONLY**

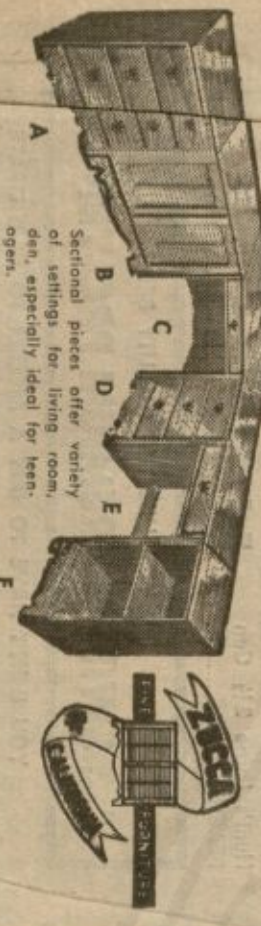
**13th ANNIVERSARY SALE FINAL**

CORNER HIGHWAY 395 AT CAIRNWOOD MESA BLVD. WEST

FRANKIE LAINE  
 PAINT YOUR WAAGON!  
 TICKETS: 50c  
 Children under 8 with adult 1.00

# August PROVINCIAL AND Sells

Pieces on Both Popular Styles Slashed Up to 20% OFF!



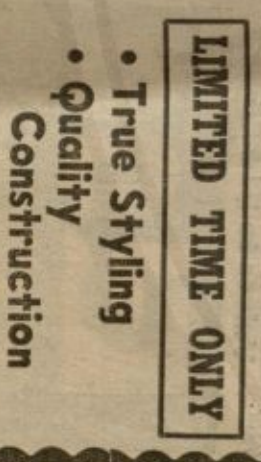
Sectional pieces offer variety of settings for living room, den, especially ideal for teenagers.

A. 3-Dr. Ch. 23" W. NOW 20.98  
 B. Cabinet " W. NOW 21.98  
 C. Comm. D. NOW 24.98  
 D. 3-Dr. Chest, 16" W. NOW 13.98  
 E. 1-Dr. Desk, 22" W. NOW 8.98  
 F. Bookcase, 16" W. NOW 11.98



Apply The Finish You Desire!  
 Provincial in Hemlock

NIGHT STANDS 16" wide NOW 19.98  
 13-DRAWER MR. & MRS. NOW 69.98



LIMITED TIME ONLY

- True Styling
- Quality Construction
- Budget Prices

**COLONIAL STYLES IN HEMLOCK OR MAPLE**

**UPRIGHT HEADBOARDS**  
 Available in Twin, Queen or Double Size  
 NOW 1498

**Free Delivery**

**3-DRAWER CHEST**  
 22" Wide  
 NOW 16.98

**High Boy CHEST**  
 34" Wide  
 NOW 39.98

**4-DRAWER CHEST**  
 34" Wide  
 NOW 37.98

**7-DRAWER DESK 46" W**  
 NOW 52.98

**5-DRAWER DESK 37 1/2" W**  
 NOW 35.98

**9-DRAWER MR. & MRS. DRESSER**  
 NOW 49.98

**LAMINATED TOPS**  
 Choice of White or Salem Maple  
 PROVINCIAL — Veneer Only

**5-DRAWER DESK 37 1/2" W**  
 NOW 35.98

**New Tone 'n Tique ANTIQUING KIT**

Developed by professional finishers, it is easy to use. Available in oil or enamel finish. Available on wood or metal furniture and fixtures.

**5.00** each

TONES AVAILABLE



**3 EASY Credit Plans**

BANKAMCARD. OPEN MON. & FRI. 'TIL 9 P M

801 University at 8th • 298-7231

**WARRIORS**

**GROSSMONT CENTER ONLY**

**DRESSES**  
 Regular 16.00 to 20.00  
 Regular 23.00 to 30.00  
 Regular 36.00 to 46.00

**KNIT DRESSES**  
 UP TO 1/2 OFF

**GROSSMONT CENTER ONLY**

**13th ANNIVERSARY SALE FINAL**

CORNER HIGHWAY 395 AT CAIRNWOOD MESA BLVD. WEST

FRANKIE LAINE  
 PAINT YOUR WAAGON!  
 TICKETS: 50c  
 Children under 8 with adult 1.00

**Cashmere Sweaters**  
 Reg. 110.00  
**\$79**

**Cashmere Sweaters**  
 Reg. 5.00 to 7.00  
**2 for \$7 \$4 ea.**

**Cashmere Sweaters**  
 Reg. 110.00  
**\$79**

**COORDINATED SPORTSWEAR**  
 Reg. 14.00 - 125.00  
 up to 1/2 OFF

**CAPRIS, SLACKS, JAMACAS, BLOUSES**  
 Reg. 4.00 - 40.00  
 up to 1/2 OFF

**ALL SALES FINAL**

**ALL WOOL COATS \$18**

**ODDS 'N' ENDS SHOES \$6.00**

**DE LISO D SHOES 890 to 1290**

**WARRIORS**

**GROSSMONT Shopping Center**

ALSO STORES IN EL CAJON • CHULA VISTA • LA JOLLA



# LOCAL CADETS PARTICIPATE IN USAF ENCAMPMENT



An Air Force Reserve Officer Training Corps summer encampment was held at Williams Air Force Base, Ariz., in which 16 local area youths participated.

All are cadets in the Air Force reserve officer program. They took part in various phases of base operations during the encampment. The cadets are eligible for appointments as Air Force second lieutenants upon completion of their AFROTC training and graduation from college.

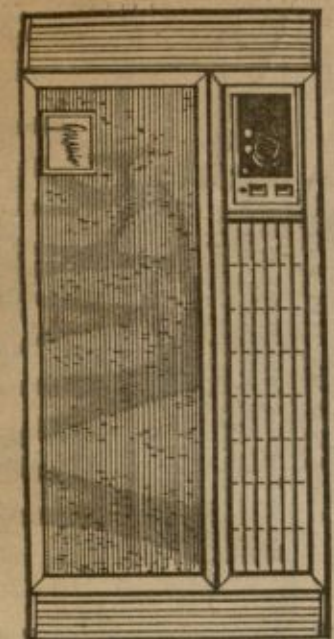
Francisco Munoz, Richard Boljack, Joseph Stengel, Patrick Galetta, James Clark, Keith Douglas, and Oliver Frey.

Other participants include: Glenn Caldwell, Lynn Leberenz, Eugene Rathwohl, William Parrott, John Nordin II, Rowland Stanley, Eric Ebel, and William Pine.

**A ROOM AIR CONDITIONER KEEPS YOU COOL**



**EASY TO BUY • EASY TO INSTALL**  
To determine what size you need, phone us at 232-4252. We'll be glad to help you.



SAN DIEGO GAS & ELECTRIC CO.

**Sandy's ANNUAL SUMMER CLEARANCE**

Expert fitting and service on San Diego's original collection store.

THOUSANDS OF PAIRS OF NATIONAL ADV. BRANDS We urge you to hurry for the very best selection in this our greatest sale of the year. Values to \$16.95

**5.00 PAIR** Other selected values to \$32.95 now only \$9 and \$11 pr.

**3.00 PAIR** Values to \$21.95

**7.00 PAIR**

Special Selection of **MEN'S SHOES** Another great feature of our annual summer sale. HURRY FOR BEST SELECTION.

**\$7.00 PAIR** 2 pr. for \$13.00

Sale at the Park store only! **3034 UNIVERSITY AVENUE** Open Monday and Friday Until 9p.m.

**Sandys** CHARGE ACCOUNTS & BIANERICARD

**ENGINEERS READ BETWEEN LINES**

Those mysterious white lines in the streets and on the hillsides throughout San Diego will be removed some time next week following the completion of this year's aerial survey mapping by city engineers.

But the 14-inch wide, 16-foot long lines will appear at about the same time next year, and every year throughout 1967 until the current program is completed. City Engineer Ed Gabrielson said, however, that in the future all markings will be stenciled "aerial survey". He said this year's unmarked indicators created considerable curiosity.

The marks on streets, hillsides and on the beaches are used by mapping plane pilots as guide lines for flight direction during photo runs back-and-forth over the city, Gabrielson said. Some 225 indicators were marked on the ground throughout the city for this year's portion of the program, he said.

**WOULD YOU LIKE TO SAVE MONEY ON FOOD?**

If you do, now is the time to start buying direct from us at discount and savings of dollars. At last, here is a way you can feed your family better for a cent or so a pound every day. Check these unheard of low prices on THIS WEEK'S SPECIAL FOR MEMBERS:

**5 lb SUGAR 53¢**  
**9¢**

Cleaner—Giant Size  
EAG

**DO YOU LIKE TOP QUALITY BEEF? WE FEATURE SWIFT'S PREMIUM PRO-TEN BEEF**

YOU DON'T HAVE TO BUY A FREEZER TO PARTICIPATE IN THIS SERVICE. YOU MAY EVEN HAVE AN EMPTY ONE NOW IF YOU DON'T HAVE A FREEZER. WE FURNISH YOU WITH FREEZER FACILITIES TO USE

Now feed your family the way they WANT to eat instead of the way they SUFFER. Let them eat. Our Meat and Food Company has been serving the large volume bulk in Southern California for many years. Now, for the first time, you can buy direct from the same low priced large restaurants and hotels you. IN ADDITION TO SAVING HUNDREDS OF DOLLARS ON YOUR GROCERY BILL YOU ENJOY THE SAVINGS ON OUR SPECIAL

Listed below are examples that may be on special from week to week.

|                                |     |     |                                  |                         |     |
|--------------------------------|-----|-----|----------------------------------|-------------------------|-----|
| Folger's COFFEE                | lb. | 39¢ | Campbell's SOUP                  | 6 varieties, choose fro | 71¢ |
| Farmer John's WIENERS          | lb. | 31¢ | Giant — Reg. 79¢ TIDE            |                         | 39¢ |
| Ardan MARGARINE                | lb. | 11¢ | Maxwell House — 1 lb. COFFEE     |                         | 39¢ |
| Swift's BACON                  | lb. | 29¢ | Best Foods MAYONNAISE            | qt. jar                 | 39¢ |
| Hunt's Large 2 1/2 Can PEACHES | ea. | 14¢ | All Brands, Reg. Size CIGARETTES | Size Cin.               | 173 |

**Unconditional Guarantee**

1. All of our food is 100% unconditionally guaranteed in writing. Any food which does not meet with your complete satisfaction is replaced at no cost to you.

2. A complete line of bottled goods, canned goods, meats, vegetables, chickens, sea foods, eggs, bread, etc., all at Discount Prices (batteries, no milk or dairy products).

3. Truck service is available for delivery to THE DISCOUNT HOUSE for members of The Greater San Diego area.

4. You save time, money and health in this service and have the use of our facilities besides.

5. You have a Super Market right in your finger tips and rid your refrigerator for all of the high cost of food.

Find Out MORE About This Amazing Service TODAY!

Simply phone us TODAY, ask for more information about buying your food at discount prices. Absolutely no obligation. You can't afford NOT to find out more about this wonderful service. Don't put off answering this announcement even for one day. The best time starts scoring money is NOW. It will only take a minute to find out how.

**FROSTMASTER FOODS**  
Serving San Diego County

WE HAVE CONVENIENTLY LOCATED MEAT AND GROCERY WAREHOUSE FACILITIES IN SAN DIEGO COUNTY AND THE SURROUNDING COUNTY. ALSO PROMPT DELIVERY SERVICE AVAILABLE IN MOST COUNTY AREAS

Don't Wait... Call Now... 234-2183  
No Obligation



# WALLPAPER-PAINT

## Save 10% to 50%

**ON EVERY ITEM EVERY DAY**  
**QUALITY CONTROL:** Standard Quality Control Laboratory, staffed by 13 skilled technicians and equipped with qualified produce chemists, is your guarantee that none of the merchandise is of inferior or "economy" grade. For here only the most modern up-to-date conditions possible, every item offered to the public, our retail store is stored and analyzed to assure that the quality is as good as possible for the job it is intended to do.

**EVERYTHING ALWAYS SOLD WITH AN UNCONDITIONAL MONEY BACK GUARANTEE**

**STANDARD BRAND PAINT CO.**  
*Buy the Best*  
 They Have a Cow Store Certified by Our Buying Laboratory

**FREE EXPERT SERVICE**  
**OPEN 7 DAYS & 5 NIGHTS**  
 MONDAY THRU FRIDAY 8:00 am to 9:00 pm  
 SATURDAY 8:00 am to 6:30 pm  
 SUNDAY 8:30 am to 5:30 pm

**PAIN** OBTAINABLE IN YOUR OWN CAN NOW **19c**

**ROLLER & PAN** VERY GOOD GRADE NOW **69c**

**7 IN. PAINT SET** NOW **89c**

**4 IN. PURE BRISTLE PAINT BRUSH** NOW **89c**

**MASKING TAPE** 1/2 IN. X 60 FT. NOW **8c**

### FLOOR TILE SALE!

#### INLAID LINOLEUM

**"ARMSTRONG" "BIRD"**

- SERVICE GAUGE
- EXTREMELY DURABLE
- FIRST QUALITY
- IDEAL FOR ANY FLOOR
- IN THE HOUSE
- LARGE SELECTION OF STYLES AND PATTERNS

COMP. RETAIL PRICE NOW **7 1/2c** ONLY

PER 9x9 INCH TILE

FINEST IMPORTED LINOLEUM PASTE SPREADER **29c**

FINEST IMPORTED LINOLEUM **19c**

• EASY TO INSTALL

• COLORS GO THRU TO BACKING

• LONG WEARINGS

• "ARMSTRONG" VINYL ASBESTOS FLOOR TILE

• DISK OR CONCRETE OR WOOD

• LARGE SELECTION

COMP. RETAIL PRICE NOW **11 1/2c** ONLY

"GOODYEAR" PURE VINYL TILE

• LIFE TIME GUARANTEE

• EASY TO INSTALL

• NO WAXING

COMP. RETAIL PRICE NOW **18c** ONLY

### VERTICAL SHUTTERS

FINEST GRADE MOVABLE LOUVER PHILIPPINE MAHOGANY SHUTTERS. HAND SANDED READY TO PAINT OR STAIN

6 1/2 x 13 in. COMP. RETAIL 99c NOW **59c** EA.

7 1/2 x 13 in. COMP. RETAIL 1.19 NOW **1.29** EA.

8 1/2 x 13 in. COMP. RETAIL 1.29 NOW **1.39** EA.

9 1/2 x 13 in. COMP. RETAIL 1.39 NOW **1.49** EA.

10 1/2 x 13 in. COMP. RETAIL 1.49 NOW **1.59** EA.

11 1/2 x 13 in. COMP. RETAIL 1.59 NOW **1.69** EA.

12 1/2 x 13 in. COMP. RETAIL 1.69 NOW **1.79** EA.

ALSO AVAILABLE 33 SIZES OF HORIZONTAL LOUVER SHUTTERS

FOLDING WOODEN ACCORDION DOORS

FINEST QUALITY EASY TO INSTALL 32"-36" TYPE COMP. RETAIL 89c NOW **49c** EA.

MANY OTHER SIZES AVAILABLE

### BAMBOO BLINDS

• FINEST QUALITY

• IMPORTED

• NATURAL TONE

2x6 FT. COMP. RETAIL 82c NOW **65c** EA.

4x6 FT. NOW **1.39**

6x6 FT. NOW **1.89**

8x6 FT. NOW **2.39**

10x6 FT. NOW **2.89**

12x6 FT. NOW **3.39**

14x6 FT. NOW **3.89**

16x6 FT. NOW **4.39**

18x6 FT. NOW **4.89**

20x6 FT. NOW **5.39**

22x6 FT. NOW **5.89**

24x6 FT. NOW **6.39**

26x6 FT. NOW **6.89**

28x6 FT. NOW **7.39**

30x6 FT. NOW **7.89**

32x6 FT. NOW **8.39**

34x6 FT. NOW **8.89**

36x6 FT. NOW **9.39**

38x6 FT. NOW **9.89**

40x6 FT. NOW **10.39**

42x6 FT. NOW **10.89**

44x6 FT. NOW **11.39**

46x6 FT. NOW **11.89**

48x6 FT. NOW **12.39**

50x6 FT. NOW **12.89**

52x6 FT. NOW **13.39**

54x6 FT. NOW **13.89**

56x6 FT. NOW **14.39**

58x6 FT. NOW **14.89**

60x6 FT. NOW **15.39**

62x6 FT. NOW **15.89**

64x6 FT. NOW **16.39**

66x6 FT. NOW **16.89**

68x6 FT. NOW **17.39**

70x6 FT. NOW **17.89**

72x6 FT. NOW **18.39**

74x6 FT. NOW **18.89**

76x6 FT. NOW **19.39**

78x6 FT. NOW **19.89**

80x6 FT. NOW **20.39**

82x6 FT. NOW **20.89**

84x6 FT. NOW **21.39**

86x6 FT. NOW **21.89**

88x6 FT. NOW **22.39**

90x6 FT. NOW **22.89**

92x6 FT. NOW **23.39**

94x6 FT. NOW **23.89**

96x6 FT. NOW **24.39**

98x6 FT. NOW **24.89**

100x6 FT. NOW **25.39**

102x6 FT. NOW **25.89**

104x6 FT. NOW **26.39**

106x6 FT. NOW **26.89**

108x6 FT. NOW **27.39**

110x6 FT. NOW **27.89**

112x6 FT. NOW **28.39**

114x6 FT. NOW **28.89**

116x6 FT. NOW **29.39**

118x6 FT. NOW **29.89**

120x6 FT. NOW **30.39**

122x6 FT. NOW **30.89**

124x6 FT. NOW **31.39**

126x6 FT. NOW **31.89**

128x6 FT. NOW **32.39**

130x6 FT. NOW **32.89**

132x6 FT. NOW **33.39**

134x6 FT. NOW **33.89**

136x6 FT. NOW **34.39**

138x6 FT. NOW **34.89**

140x6 FT. NOW **35.39**

142x6 FT. NOW **35.89**

144x6 FT. NOW **36.39**

146x6 FT. NOW **36.89**

148x6 FT. NOW **37.39**

150x6 FT. NOW **37.89**

152x6 FT. NOW **38.39**

154x6 FT. NOW **38.89**

156x6 FT. NOW **39.39**

158x6 FT. NOW **39.89**

160x6 FT. NOW **40.39**

162x6 FT. NOW **40.89**

164x6 FT. NOW **41.39**

166x6 FT. NOW **41.89**

168x6 FT. NOW **42.39**

170x6 FT. NOW **42.89**

172x6 FT. NOW **43.39**

174x6 FT. NOW **43.89**

176x6 FT. NOW **44.39**

178x6 FT. NOW **44.89**

180x6 FT. NOW **45.39**

182x6 FT. NOW **45.89**

184x6 FT. NOW **46.39**

186x6 FT. NOW **46.89**

188x6 FT. NOW **47.39**

190x6 FT. NOW **47.89**

192x6 FT. NOW **48.39**

194x6 FT. NOW **48.89**

196x6 FT. NOW **49.39**

198x6 FT. NOW **49.89**

200x6 FT. NOW **50.39**

202x6 FT. NOW **50.89**

204x6 FT. NOW **51.39**

206x6 FT. NOW **51.89**

208x6 FT. NOW **52.39**

210x6 FT. NOW **52.89**

212x6 FT. NOW **53.39**

214x6 FT. NOW **53.89**

216x6 FT. NOW **54.39**

218x6 FT. NOW **54.89**

220x6 FT. NOW **55.39**

222x6 FT. NOW **55.89**

224x6 FT. NOW **56.39**

226x6 FT. NOW **56.89**

228x6 FT. NOW **57.39**

230x6 FT. NOW **57.89**

232x6 FT. NOW **58.39**

234x6 FT. NOW **58.89**

236x6 FT. NOW **59.39**

238x6 FT. NOW **59.89**

240x6 FT. NOW **60.39**

242x6 FT. NOW **60.89**

244x6 FT. NOW **61.39**

246x6 FT. NOW **61.89**

248x6 FT. NOW **62.39**

250x6 FT. NOW **62.89**

252x6 FT. NOW **63.39**

254x6 FT. NOW **63.89**

256x6 FT. NOW **64.39**

258x6 FT. NOW **64.89**

260x6 FT. NOW **65.39**

262x6 FT. NOW **65.89**

264x6 FT. NOW **66.39**

266x6 FT. NOW **66.89**

268x6 FT. NOW **67.39**

270x6 FT. NOW **67.89**

272x6 FT. NOW **68.39**

274x6 FT. NOW **68.89**

276x6 FT. NOW **69.39**

278x6 FT. NOW **69.89**

280x6 FT. NOW **70.39**

282x6 FT. NOW **70.89**

284x6 FT. NOW **71.39**

286x6 FT. NOW **71.89**

288x6 FT. NOW **72.39**

290x6 FT. NOW **72.89**

292x6 FT. NOW **73.39**

294x6 FT. NOW **73.89**

296x6 FT. NOW **74.39**

298x6 FT. NOW **74.89**

300x6 FT. NOW **75.39**

302x6 FT. NOW **75.89**

304x6 FT. NOW **76.39**

306x6 FT. NOW **76.89**

308x6 FT. NOW **77.39**

310x6 FT. NOW **77.89**

312x6 FT. NOW **78.39**

314x6 FT. NOW **78.89**

316x6 FT. NOW **79.39**

318x6 FT. NOW **79.89**

320x6 FT. NOW **80.39**

322x6 FT. NOW **80.89**

324x6 FT. NOW **81.39**

326x6 FT. NOW **81.89**

328x6 FT. NOW **82.39**

330x6 FT. NOW **82.89**

332x6 FT. NOW **83.39**

334x6 FT. NOW **83.89**

336x6 FT. NOW **84.39**

338x6 FT. NOW **84.89**

340x6 FT. NOW **85.39**

342x6 FT. NOW **85.89**

344x6 FT. NOW **86.39**

346x6 FT. NOW **86.89**

348x6 FT. NOW **87.39**

350x6 FT. NOW **87.89**

352x6 FT. NOW **88.39**

354x6 FT. NOW **88.89**

356x6 FT. NOW **89.39**

358x6 FT. NOW **89.89**

360x6 FT. NOW **90.39**

362x6 FT. NOW **90.89**

364x6 FT. NOW **91.39**

366x6 FT. NOW **91.89**

368x6 FT. NOW **92.39**

370x6 FT. NOW **92.89**

372x6 FT. NOW **93.39**

374x6 FT. NOW **93.89**

376x6 FT. NOW **94.39**

378x6 FT. NOW **94.89**

380x6 FT. NOW **95.39**

382x6 FT. NOW **95.89**

384x6 FT. NOW **96.39**

386x6 FT. NOW **96.89**

388x6 FT. NOW **97.39**

390x6 FT. NOW **97.89**

392x6 FT. NOW **98.39**

394x6 FT. NOW **98.89**

396x6 FT. NOW **99.39**

398x6 FT. NOW **99.89**

400x6 FT. NOW **100.39**

402x6 FT. NOW **100.89**

404x6 FT. NOW **101.39**

406x6 FT. NOW **101.89**

408x6 FT. NOW **102.39**

410x6 FT. NOW **102.89**

412x6 FT. NOW **103.39**

414x6 FT. NOW **103.89**

416x6 FT. NOW **104.39**

418x6 FT. NOW **104.89**

420x6 FT. NOW **105.39**

422x6 FT. NOW **105.89**

424x6 FT. NOW **106.39**

426x6 FT. NOW **106.89**

428x6 FT. NOW **107.39**

430x6 FT. NOW **107.89**

432x6 FT. NOW **108.39**

434x6 FT. NOW **108.89**

436x6 FT. NOW **109.39**

438x6 FT. NOW **109.89**

440x6 FT. NOW **110.39**

442x6 FT. NOW **110.89**

444x6 FT. NOW **111.39**

446x6 FT. NOW **111.89**

448x6 FT. NOW **112.39**

450x6 FT. NOW **112.89**

452x6 FT. NOW **113.39**

454x6 FT. NOW **113.89**

456x6 FT. NOW **114.39**

458x6 FT. NOW **114.89**

460x6 FT. NOW **115.39**

462x6 FT. NOW **115.89**

464x6 FT. NOW **116.39**

466x6 FT. NOW **116.89**

468x6 FT. NOW **117.39**

470x6 FT. NOW **117.89**

472x6 FT. NOW **118.39**

474x6 FT. NOW **118.89**

476x6 FT. NOW **119.39**

478x6 FT. NOW **119.89**

480x6 FT. NOW **120.39**

482x6 FT. NOW **120.89**

484x6 FT. NOW **121.39**

486x6 FT. NOW **121.89**

488x6 FT. NOW **122.39**

490x6 FT. NOW **122.89**

492x6 FT. NOW **123.39**

494x6 FT. NOW **123.89**

496x6 FT. NOW **124.39**

498x6 FT. NOW **124.89**

500x6 FT. NOW **125.39**

502x6 FT. NOW **125.89**

504x6 FT. NOW **126.39**

506x6 FT. NOW **126.89**

508x6 FT. NOW **127.39**

510x6 FT. NOW **127.89**

512x6 FT. NOW **128.39**

514x6 FT. NOW **128.89**

516x6 FT. NOW **129.39**

518x6 FT. NOW **129.89**

520x6 FT. NOW **130.39**

522x6 FT. NOW **130.89**

524x6 FT. NOW **131.39**

526x6 FT. NOW **131.89**

528x6 FT. NOW **132.39**

530x6 FT. NOW **132.89**

532x6 FT. NOW **133.39**

534x6 FT. NOW **133.89**

536x6 FT. NOW **134.39**

538x6 FT. NOW **134.89**

540x6 FT. NOW **135.39**

542x6 FT. NOW **135.89**

544x6 FT. NOW **136.39**

546x6 FT. NOW **136.89**

548x6 FT. NOW **137.39**

550x6 FT. NOW **137.89**

552x6 FT. NOW **138.39**

554x6 FT. NOW **138.89**

556x6 FT. NOW **139.39**

558x6 FT. NOW **139.89**

560x6 FT. NOW **140.39**

562x6 FT. NOW **140.89**

564x6 FT. NOW **141.39**

566x6 FT. NOW **141.89**

568x6 FT. NOW **142.39**

570x6 FT. NOW **142.89**

572x6 FT. NOW **143.39**

574x6 FT. NOW **143.89**

576x6 FT. NOW **144.39**

578x6 FT. NOW **144.89**

580x6 FT. NOW **145.39**

582x6 FT. NOW **145.89**

584x6 FT. NOW **146.39**

586x6 FT. NOW **146.89**

588x6 FT. NOW **147.39**

590x6 FT. NOW **147.89**

592x6 FT. NOW **148.39**

594x6 FT. NOW **148.89**

596x6 FT. NOW **149.39**

598x6 FT. NOW **149.89**

600x6 FT. NOW **150.39**

602x6 FT. NOW **150.89**

604x6 FT. NOW **151.39**

606x6 FT. NOW **151.89**

608x6 FT. NOW **152.39**

610x6 FT. NOW **152.89**

612x6 FT. NOW **153.39**

614x6 FT. NOW **153.89**

616x6 FT. NOW **154.39**

618x6 FT. NOW **154.89**

620x6 FT. NOW **155.39**

622x6 FT. NOW **155.89**

624x6 FT. NOW **156.39**

626x6 FT. NOW **156.89**

628x6 FT. NOW **157.39**

630x6 FT. NOW **157.89**

632x6 FT. NOW **158.39**

634x6 FT. NOW **158.89**

636x6 FT. NOW **159.39**

638x6 FT. NOW **159.89**

640x6 FT. NOW **160.39**

642x6 FT. NOW **160.89**

644x6 FT. NOW **161.39**

646x6 FT. NOW **161.89**

648x6 FT. NOW **162.39**

650x6 FT. NOW **162.89**

652x6 FT. NOW **163.39**

654x6 FT. NOW **163.89**

656x6 FT. NOW **164.39**

658x6 FT. NOW **164.89**

660x6 FT. NOW **165.39**

662x6 FT. NOW **165.89**

664x6 FT. NOW **166.39**

666x6 FT. NOW **166.89**

668x6 FT. NOW **167.39**

670x6 FT. NOW **167.89**

672x6 FT. NOW **168.39**

674x6 FT. NOW **168.89**

676x6 FT. NOW **169.39**

678x6 FT. NOW **169.89**

680x6 FT. NOW **170.39**

682x6 FT. NOW **170.89**

684x6 FT. NOW **171.39**

686x6 FT. NOW **171.89**

688x6 FT. NOW **172.39**

690x6 FT. NOW **172.89**

692x6 FT. NOW **173.39**

694x6 FT. NOW **173.89**

696x6 FT. NOW **174.39**

698x6 FT. NOW **174.89**

700x6 FT. NOW **175.39**

702x6 FT. NOW **175.89**

704x6 FT. NOW **176.39**

706x6 FT. NOW **176.89**

708x6 FT. NOW **177.39**

710x6 FT. NOW **177.89**

712x6 FT. NOW **178.39**

714x6 FT. NOW **178.89**

716x6 FT. NOW **179.39**

718x6 FT. NOW **179.89**

720x6 FT. NOW **180.39**

722x6 FT. NOW **180.89**

724x6 FT. NOW **181.39**

726x6 FT. NOW **181.89**

728x6 FT. NOW **182.39**

730x6 FT. NOW **182.89**

732x6 FT. NOW **183.39**

734x6 FT. NOW **183.89**

736x6 FT. NOW **184.39**

738x6 FT. NOW **184.89**

740x6 FT. NOW **185.39**

742x6 FT. NOW **185.89**

744x6 FT. NOW **186.39**

746x6 FT. NOW **186.89**

748x6 FT. NOW **187.39**

750x6 FT. NOW **187.89**

752x6 FT. NOW **188.39**

754x6 FT. NOW **188.89**

756x6 FT. NOW **189.39**

758x6 FT. NOW **189.89**

760x6 FT. NOW **190.39**

762x6 FT. NOW **190.89**

764x6 FT. NOW **191.39**

766x6 FT. NOW **191.89**

768x6 FT. NOW **192.39**

770x6 FT. NOW **192.89**

772x6 FT. NOW **193.39**

774x6 FT. NOW **193.89**

776x6 FT. NOW **194.39**

778x6 FT. NOW **194.89**

780x6 FT. NOW **195.39**

782x6 FT. NOW **195.89**

784x6 FT. NOW **196.39**

786x6 FT. NOW **196.89**

788x6 FT. NOW **197.39**

790x6 FT. NOW **197.89**

792x6 FT. NOW **198.39**

794x6 FT. NOW **198.89**

796x6 FT. NOW **199.39**

798x6 FT. NOW **199.89**

800x6 FT. NOW **200.39**

802x6 FT. NOW **200.89**

804x6 FT. NOW **201.39**

806x6 FT. NOW **201.89**

808x6 FT. NOW **202.39**

810x6 FT. NOW **202.89**

812x6 FT. NOW **203.39**

814x6 FT. NOW **203.89**

816x6 FT. NOW **204.39**

818x6 FT. NOW **204.89**

820x6 FT. NOW **205.39**

822x6 FT. NOW **205.89**

824x6 FT. NOW **206.39**

826x6 FT. NOW **206.89**

828x6 FT. NOW **207.39**

830x6 FT. NOW **207.89**

832x6 FT. NOW **208.39**

834x6 FT. NOW **208.89**

836x6 FT. NOW **209.39**

838x6 FT. NOW **209.89**

840x6 FT. NOW **210.39**

842x6 FT. NOW **210.89**

844x6 FT. NOW **211.39**

846x6 FT. NOW **211.89**

848x6 FT. NOW **212.39**

850x6 FT. NOW **212.89**

852x6 FT. NOW **213.39**

854x6 FT. NOW **213.89**

856x6 FT. NOW **214.39**

858x6 FT. NOW **214.89**

860x6 FT. NOW **215.39**

862x6 FT. NOW **215.89**

864x6 FT. NOW **216.39**

866x6 FT. NOW **216.89**

868x6 FT. NOW **217.39**

870x6 FT. NOW **217.89**

872x6 FT. NOW **218.39**

874x6 FT. NOW **218.89**

876x6 FT. NOW **219.39**

878x6 FT. NOW **219.89**

880x6 FT. NOW **220.39**

882x6 FT. NOW **220.89**

884x6 FT. NOW **221.39**

886x6 FT. NOW **221.89**



# Independent Food and Family



**SEDUCING THE APETITE** for an unusual breakfast, lunch or "brunch," this Omelette à la Suisse was chosen the best sandwich in the United States in over-all professional

## Omelet 'Tops' in U.S. Sandwiches

In creating this top prize-winning sandwich, Chef Robert E. Rieger made an ideal breakfast breakfast... a small omelet filled with mushrooms, sausage, green onions and parsley, served on a slice of sour dough bread and accompanied by a second bread slice topped with Swiss cheese.

**OMELETTE A LA SWISS**

- 6 eggs, beaten
- 6 cooled milk sausages, thinly sliced
- 6 tablespoons sliced cooked fresh or canned mushrooms
- 2 tablespoons chopped green onions
- 1 tablespoon chopped parsley
- 1/4 teaspoon salt

Dash pepper  
1 1/2-inch slices white sour dough or Vienna bread (1 pound loaf)  
Butter or margarine, softened  
6 slices Swiss cheese  
6 French fried potatoes  
6 lettuce cups  
6 wedges tomato (1 large tomato)  
12 pinhead-stuffed green olives

Paralyze  
Combine eggs, sausage, mushrooms, onions, parsley, salt and pepper. Pour about 1/3 cup egg mixture into lightly greased hot iron skillet, pan or six-inch skillet. Cook, stirring gently, until top is set but still moist and bottom is lightly browned. Remove omelet from heat and fold in half. Keep warm while preparing five remaining omelets. Toast and spread with butter or margarine. Place omelets on a slice of toast slice. Fold cheese slices to cover remaining toast slice. Place cheese and omelet-topped slice under broiler or in oven until cheese is melted. Serve one cheese-topped and one omelet-topped slice per sandwich. Garnish each with French fried potatoes and lettuce cup filled with tomato wedges, two olives and parsley sprig. Serve open-faced. Makes 6 sandwiches.

## Sandwich Is King In August

Today marks the official opening of National Sandwich Month and it is particularly appropriate that the announcement of the three top sandwiches in the United States were released yesterday afternoon, in time to introduce them to San Diego housewives. Variations of these three prize winners no doubt will be made in each household according to family tastes and purse.

The three winning creations were served yesterday at Coronation ceremonies in the Hotel Pierre, New York City, at which Chef Robert Rieger of Reno's Coffee Shoppe in Mojave, California, was crowned "King of Sandwich Makers." With Carmen Threlia, executive chef at the Martin-Skaretta Corp., Omaha, Nebraska, and Mrs. Lorraine Goyne, pantry girl at the Sky Lanes and Cimarron Room, Omaha, Nebraska, crown princess.

Recipes for the three prize winning sandwiches are given on this page, together with pictures.

Rieger's "Omelette à la Suisse" sandwich, featuring a small omelet filled with mushrooms, sausage, green onions and parsley, served on a slice of sour dough bread, topped with Swiss cheese, won for him an all-expense paid two-week trip for two anywhere in the world plus \$600 cash.

Threlia's "Stromboli" was worth \$1,000 cash. Mrs. Goyne's "Shrimp Luncheon Sandwich" brought her \$500 cash. Prizes will all be winners with these delectable summer sandwiches.



**ONE SANDWICH FOR THE WHOLE family** is the Vienna meatloaf which hides its goodness inside a loaf of Vienna bread, with a hidden frankfurter surprise underneath.

## Swedish 'Lox' Delight In Sandwich

Many Southern Californians have discovered the delight of sliced smoked salmon, familiarly known as lox, a term derived from the Scandinavian word for this savory, salty-smoky, sensational fish. One's first experience is frequently at a delicatessen restaurant, possibly with a lox and cream cheese sandwich.

Such a sandwich is in itself a light meal for warm summer days, served with salad, beverage and dessert. The sandwich may be prepared at home with rye bread, a kaiser roll or a bagel. The smoked salmon is available in 3 ounce packages at the delicatessen department of your market.

To prepare the sandwich, split the bagel or kaiser roll or bagel with butter, then soft cream cheese. Place slices of smoked salmon on top, then one or two slices of onion. Top with the bread and serve.

Variation: Instead of, or in addition to onion, use sliced tomatoes, cucumbers, hard-boiled eggs, a sprinkling of frozen chopped olives, or any combination of these.

## Vienna Meatloaf Fine For Barbeque Meal

A Vienna Meatloaf? No, it's not as you might think it sounds—just every bit as delicious as the barbecued meatloaf in long Vienna bread that it is.

There's more to the goodness of this meat-in-one sandwich, though. Baked inside, beneath the meatloaf, are sliced frankfurters that give which a flavor treat the youngsters will especially like.

During August, National Sandwich Month, and all year round, serve Vienna Meatloaf Sandwich with a crisp green salad, cool refreshers, iced tea and homemade pie. This menu is one you'll use often with other sandwich favorites.

The Vienna Meatloaf is a simpler item that cooks over charcoal flavor. Be certain to wrap each loaf carefully in heavy-duty aluminum foil. After packing the loaf down over the coals, prick the foil a few times with a fork to allow the steam to escape.

**VIENNA MEATLOAF SANDWICH**

- 1-pound loaf crusty Vienna bread, unsplit
- 1-pound ground beef

1 1/3 cup pickle relish  
2 tablespoons barbecue sauce  
1 tablespoon dried shredded green onion  
1 1/2 teaspoon pepper  
4 frankfurters, sliced in half lengthwise  
Barbecue sauce  
Cut bread in half lengthwise. Scoop out center of top and bottom halves of loaf. Tear bread into small pieces and reserve 3 cups. Blend eggs, pickle relish, 2 tablespoons barbecue sauce, green onion, salt and pepper. Mix together. Form and bake 1 hour. Turn over and bake 1 hour. Remove from oven and let stand 10 minutes. Slice bread into 1 1/2 inch slices. Spread with barbecue sauce. Place frankfurters in bottom of loaf. Press ground beef mixture over frankfurters. Wrap each loaf in heavy-duty aluminum foil with a double-fold seam on top. Prick meatloaf several times with a fork. Cook 1 1/2 hours with a few times with a fork to allow steam to escape. Bake for 1 hour or until meat is cooked. Or, bake in slow oven (325-F.) for 1 hour. Remove loaf and pour additional barbecue sauce over meat in design. Cut into 1 1/2-inch slices. Serve hot. Makes 8 servings. Total preparation time: 1 hour and 30 minutes.

## Dorothy Draper Funds Saved By Work To Develop Flair

OUR FAVORITE clump of words is "more flair than funds." And if we use them over and over again it's on purpose. Since flair is easier to attain than funds and yet not something you can catch like measles or chicken pox, you have to work at it. What is it, anyway?

Flair can be as simple a thing as whether to use yellow daffodils or red geraniums as a centerpiece. Or whether to let a single pink rose in a bud vase speak its piece, or would a mass of yellow roses in an ornate green glass jug look more effective?

It's the using of an old fish-poor, painted Spanish pink for the top of a color table. It's the daring use of black lamp shades in a room that needs some definite punctuation marks.

IT'S THE ADDING of a wide fringe to your area carpet that you cut down from the old wall-to-wall model. It's a collage of familiar things of your favorite theme, pasted onto felt and framed with plain narrow pine (cut from one pine board from your local lumber company). Don't be stingy about the size.

IT'S ADDING a fat red or pink or black tasseled fringe to a plain-lane bedroom curtain, or putting three rows of ruffled fringe on the bottom of your circular table cloth.

Flair is sort of an intangible thing and if you've got it, you're lucky. And if you haven't got it—work at getting it!

**MRS. J.B.W. ASKS:**

"For many months I have been watching to see an article on how to curtain windows with Venetian blinds. Mine are in a bedroom with very old English walnut furniture. Dark woodwork, huge walls. It needs curtains, rugs and spread. Could you help me? My favorite color is blue. . . I wouldn't want browns, oranges, etc."

**DEAR MRS. J.B.W.:**

Could you possibly paint the beige walls frosty white or blue mist? Curtains and spread could be in hues of shades of blue, with green leaves on a white background. Side draperies, tied back, would go with your old English furniture. Rugs could be a deep geranium blue. A pot of red geraniums would lend the right spot of contrast.

"Be Your Own Decorator," a fascinating and most informative booklet by Dorothy Draper, is available to read 25 cents in coin and year-name and address paid to Dorothy Draper, care of this newspaper. Mrs. Draper cannot answer personal mail, but will use questions of wide general appeal in her column. Booklets should be delivered within four weeks. Copyright 1963 Dorothy Draper

**A SPECIAL TAFETTA** slip to be worn under knit, is sold in all better lingerie departments and stores. The firm material acts as an innerlining, prevents stretching and sagging.

## Women Excel Men At 'Do-It'

**MORE THAN HALF** of America's married homemakers are more skillful than their husbands when it comes to do-it-yourself projects to improve their homes, according to a nationwide study of more than 22,000 families.

While the men actually do most of the work, the women can do it better! This declaration of feminine superiority was made in 85% of the joint husband-wife responses in the study, which was conducted in all 50 states by the Research Center of the Pan-Boards Manufacturing Company, Inc., in Newark, N.J.

Most of the families interviewed also credited the women with being the "brains" behind their husbands' "brawn"—prompting the undertaking of most do-it-yourself projects in 74% of the households and deciding on decorating schemes, project design and materials for the majority of projects in 84% of the homes.

**THE NATIONWIDE** survey, aimed at learning the extent of husband-wife participation in do-it-yourself-ism, uncovered several surprising and interesting facts about the male of the species. For example, although only minority choices, the husbands were declared better skilled in handiwork in 17% of the homes, better in floor or arranging in 12%, sewing in 4% and knitting in 1%.



**NAMED FOR A VOLCANO**, this Stromboli, Carmen Trelia combined beef tenderloin, Sandwich erupts into beautifully blended flavors to tickle any man's palate. Second prize winner in national competition, Chef Smithfield ham and Mozzarella cheese on

## Stromboli Designed for Man's Meal

Taking second place in the national sandwich competition was the open-faced Stromboli, a real man-sized meal which combines beef tenderloin, Smithfield or Virginia ham and Mozzarella cheese in a delectable full-fat treatment. It was the creation of Carmen Threlia, executive dining room chef of the Martin-Skaretta Corp., Orlando, Florida.

**OPEN-FACED STROMBOLI SANDWICH**

- 18 1/4-inch slices French bread, trimmed (if desired)
- 18 1 1/2-ounce slices beef tenderloin (1 pound, 11 ounces)
- Butter or margarine
- Salt
- White pepper
- 18 paper-thin slices Smithfield ham or salt-cured field ham

Virginia ham (6 ounces)  
1 1/2-ounce slices Mozzarella cheese  
9 pitted ripe olives, halve  
6 Broiled Tomato Halves  
6 leaves lettuce  
18 small pickled sweet red peppers  
18 sherman pickles  
Toast bread on one side. Butter or margarine hot butter or margarine hot skillet. Place tenderloin on toasted side of bread, soon with salt and pepper over each tenderloin with ham slice and 1 cheese slice. Broil until cheese softens a golden brown. Place 1 1/2 olive half over each slice and add cheese. Pipe three sandwiches on each serving plate. Garnish with sliced Tomato Halves, lettuce, red peppers, pickles attractively.

**MAKES 6 SANDWICHES.**  
Browned Artichoke Hearts  
Beat 2 eggs. Add small artichoke hearts 3 tablespoons enriched ur, then dip in beaten egg whites in hot butter or margarine in skillet until gold brown.  
**Broiled Tomato Halves**  
Spread six thin halves with butter, margarine and sprinkle w Parmesan cheese. Broil till golden brown.

## Gardeners' Checklist Keeps Beds Lively

By the California Association of Nurseries

1. Food is the key to continued bloom from hibiscus. Use an acid type fertilizer for best results.

2. Water camellias with overhead spray. Moisture on the leaves is important for bud set this time of year.

3. Lift spring-blooming bulbs when the foliage has died back. Store the bulbs until September or October, then plant them again.

4. Plant berried shrubs such as pyracantha now for color from late summer into fall and winter.

5. Late summer-fall color can be had from tuberos begonias planted now. Nurseries have well developed plants by this time.

## Shrimp Basis for Luncheon Dish

A pantry girl for Sky Lanes and Cimarron Room in Omaha, Nebraska, Lorraine Goyne, came up with the third prize winner in national competition, a combination of shrimp with a special cheese sauce on Russian rye bread which she titled "Shrimp Luncheon." A fine meal for a special luncheon party, this open faced sandwich needs no accompaniment but cole slaw, one sliced crab apple and parsley.

**SHRIMP A LA GOYNE**

- 1/2 cup chopped celery
- 1/4 cup chopped green pepper
- 1/4 cup chopped onion
- 3 tablespoons butter or margarine
- 2 pounds cooked shrimp, cleaned and dried
- 1 cup chili sauce
- 1 pound Worcester-shire sauce

1 tablespoon lemon juice  
1/2 teaspoon salt  
1/2 teaspoon pepper  
1/2 teaspoon Tabasco  
12 slices Russian rye bread, Cheese Sauce  
Paprika  
Feta cheese  
6 cups cole slaw  
Cook celery, green pepper and onion in butter or margarine about five minutes, or until tender. Stir in shrimp, chili sauce. Worcester-shire sauce, lemon juice, salt, pepper and Tabasco. Place six least slices on baking sheet or heat resistant serving plates. Cut remaining toast slices in half and place on opposite ends of whole slices. Spread shrimp mixture over plates. Cover with Cheese Sauce and sprinkle with paprika. Broil until lightly browned. Garnish each with

1/4 cup cole slaw, one sliced crab apple and parsley. Serve open-faced.  
Note: For milder version, decrease pepper to 1/4 teaspoon and Tabasco to dash.  
**CHEESE SAUCE**  
3 tablespoons butter or margarine  
3 tablespoons enriched flour  
1 1/2 cups milk  
1/4 teaspoon salt  
1/4 teaspoon white pepper  
1 cup pasteurized process cheese spread  
Melt butter or margarine in saucepan. Stir in flour to make smooth paste. Gradually add milk, stirring constantly. Cook over moderate heat until thickened, stirring frequently. Blend in salt and pepper. Stir in cheese. Stir in cheese spread over low heat, blending until smooth. Makes 6 sandwiches.



**CREATED FOR CULINARY competition**, Shrimp Luncheon is sure to impress at a ladies' luncheon. Based on Russian rye bread, the shrimp hot cheese sauce which brings out the spicy flavor of the shrimp. It was created by

## Be Your Own Decorator

"Be Your Own Decorator," a fascinating and most informative booklet by Dorothy Draper, is available to read 25 cents in coin and year-name and address paid to Dorothy Draper, care of this newspaper. Mrs. Draper cannot answer personal mail, but will use questions of wide general appeal in her column. Booklets should be delivered within four weeks. Copyright 1963 Dorothy Draper

**A SPECIAL TAFETTA** slip to be worn under knit, is sold in all better lingerie departments and stores. The firm material acts as an innerlining, prevents stretching and sagging.



# 500 to Honor Fair Board Al Bahr Head In Annual Luau

In honor of Al Bahr Temple Potentate Delavan Dickson and his lady, Edith, 500 persons including temple nobles, their friends and ladies will attend a gala luau at the Kona Kai Club on Aug. 10.

It is the fourth annual luau of the Al Bahr Temple

# Colorado Alumni To Cruise

Alumni of the University of Colorado will hold their annual reunion in San Diego on Saturday, Aug. 17, during a harbor excursion on board the Maritella beginning at 8:30 p.m.

Donald Ketchum, social chairman, announces that the reunion party will have a "Tiki Cruise" theme, with guests invited to wear South Seas island attire. Dancing and games will continue to midnight.

The event is planned as a benefit for a University of Colorado Scholarship Fund to 277-4778.

# Fair Board Sees 63 as Best Ever

The county fair board met this week and reviewed details of the most successful San Diego county fair in history.

In a comment preceding the secretary-manager's report, John Strzau, former board president, commended D. Robert Jones, fair manager, and Eric Atherbury, manager of the National Horse Show, together with their "troops" for a good job well done.

The 10-day fair, which closed July 7, set an attendance record of 358,144. Far beyond the old mark, set in 1951 by 45,569.

The fair was marred by a few problems, some of which were discussed at the meeting.

One was the virus epidemic which infected entries in the National Horse Show almost simultaneously with other major horse shows elsewhere in the country.

The question of refunding entry fees to exhibitors whose horses had to be scratched because of sickness was discussed. This was approved by the board in three cases where horses did not arrive at the fairgrounds or

# State's Writers Workshop To Present Top Authors

With writers flocking from all over the United States to attend San Diego State's Workshop in Writing for Publication, it is noteworthy that the 2 and 8 p.m. lectures are open to the public without charge, giving San Diego authors and those interested in the writing field a chance to absorb the information offered for credits at the college level.

Among the noted authors who are guest lecturers for the workshop and whose talks are open to the public are these 2 p.m. speakers: Professor Arthur P. Wimer, "Writing the Breadand-Butter Feature Article;" Frank (Pales of Earp)" Tuesday, August 13.

The 8 p.m. lectures start next Monday with Robert (Flamingo Road) Willard, "I Write to Make a Living;" John Hal G. Ewarts, "The Slick Short Story Cation;" it is noteworthy that the 2 and 8 p.m. lectures are open to the public without charge, giving San Diego authors and those interested in the writing field a chance to absorb the information offered for credits at the college level.

# FRONTIER TOWN

at Big Oak Ranch  
Horshorn Canyon Rd., only 25 minutes from Downtown S.D.

Stage Coach Rides  
watch out for hold ups!

Early West Train Rides  
THERE'S LOTS TO SEE & DO

- Gunfighters, Indian dances
- Beer & Cocktail Lounge
- Arcade & Music Hall
- Oilie Ice Cream Parlor
- Tacos and Tortillas
- Curio & Antique Shops

Adults 75c  
Children Under 6 Free  
Under 12, 50c—

REDUCED RATES FOR GROUPS  
PHONE HI 5-3047

From: Two Heated Pools & All Park facilities.

**GROUP COUPON**

GOOD FOR ONE  
**FREE ADULT ADMISSION**  
PER CAR

Coupons Not Good Sundays & Holidays

# "HIT 100"

No Purchase Necessary — FREE "HIT 100" Cards at all San Diego Safeway Stores

Plus \$1,000 Cash Weekly Sweepstakes



**\$1,000 Winner**  
**MRS. CAROL BRODERDORF**  
4919 Geneva  
La Mesa, Calif.

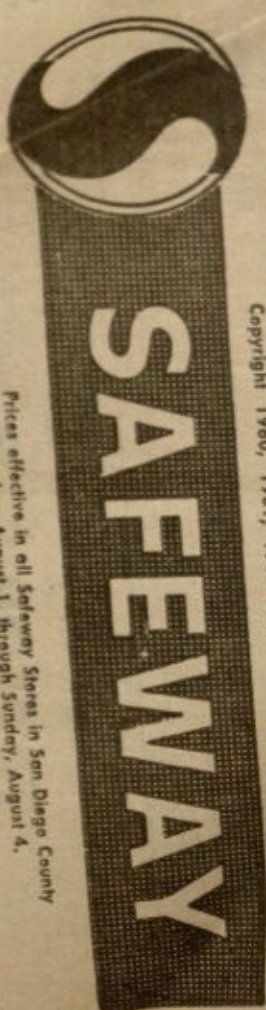
Plus \$49,600 Product Awards

**7,068 Product Awards Given Away To Date**

## Safeway Gigantic Del Monte Canned Food Sale

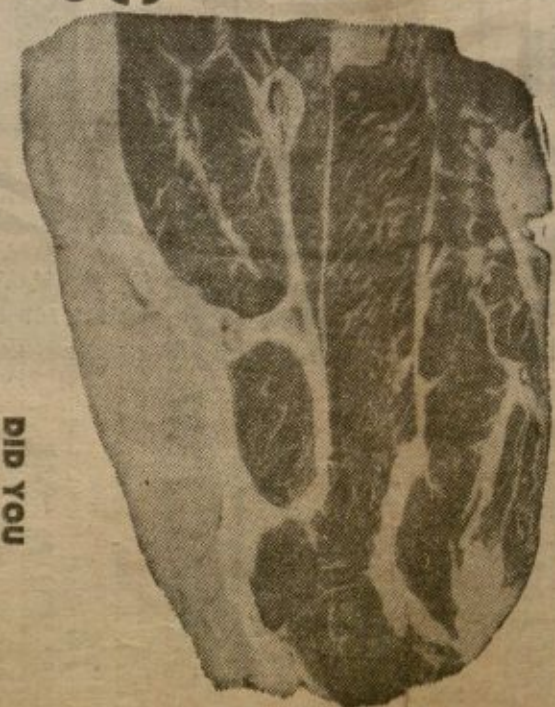
- |   |   |   |
|---|---|---|
| <b>DEL MONTE</b><br>Early Garden<br><b>Green Peas</b><br>Regular or Seasoned<br>4 303 Cans <b>79c</b> | <b>DEL MONTE</b><br>Helves or Sliced<br><b>Peaches</b><br>3 No. 2 1/2 Cans <b>89c</b> | <b>DEL MONTE</b><br>Rich-Red<br><b>Catsup</b><br>6 1-4-oz. Bottles <b>\$1</b> |
| <b>DEL MONTE</b><br>Tomato<br>Sauce<br>13 Buffet Cans <b>\$1</b>                                      | <b>DEL MONTE</b><br>Fruit<br>Cocktail<br>5 303 Cans <b>\$1</b>                        | <b>DEL MONTE</b><br>Zucchini<br>3 303 Cans <b>69c</b>                         |
| <b>DEL MONTE</b><br>Del Monte Pineapple or Pineapple-Grapefruit Juice<br>3 46-oz. Cans <b>89c</b>     | <b>DEL MONTE</b><br>Green Beans<br>4 303 Cans <b>\$1</b>                              | <b>DEL MONTE</b><br>Pickles<br>3 22-oz. Bottles <b>\$1</b>                    |
| <b>DEL MONTE</b><br>Prune Juice<br>2 61-oz. Bottles <b>89c</b>  | <b>DEL MONTE</b><br>Gold Corn<br>5 303 Cans <b>\$1</b>                                | <b>DEL MONTE</b><br>Catsup<br>6 1-4-oz. Bottles <b>\$1</b>                    |
| <b>DEL MONTE</b><br>Tomato Juice<br>4 46-oz. Cans <b>\$1</b>  | <b>DEL MONTE</b><br>Potatoes<br>6 303 Cans <b>\$1</b>                                 | <b>DEL MONTE</b><br>Zucchini<br>3 303 Cans <b>69c</b>                         |
| <b>DEL MONTE</b><br>Prunes<br>3 No. 300 Stewed <b>89c</b>   | <b>DEL MONTE</b><br>Tomatoes<br>3 303 Cans <b>69c</b>                                 | <b>DEL MONTE</b><br>Pickles<br>3 22-oz. Bottles <b>\$1</b>                    |

Blue Chip Stamps given with each purchase except Fluid Milk Products, Cigarettes, Tobacco, or Alcoholic Beverages.



Prices effective in all Safeway Stores in San Diego County Thursday, August 1, through Sunday, August 4.

- |   |   |   |  |                                       |   |  |   |
|---|---|---|--|---------------------------------------|---|--|---|
| <b>BLADE CUT</b><br>7-Bone Roast... 49c<br>Shoulder Roast... 59c<br>Round Bone... 59c | <b>CHUCK STEAK</b><br>USDA Choice... 49c<br>Center Cut... 79c | <b>GROUND BEEF</b><br>and Tenderloin... 39c | <b>ROLL SAUSAGE</b><br>Hormel Brand... 39c | <b>SLICED BACON</b><br>Pan Fry... 49c | <b>GROUND SHOULDER</b><br>and Tenderloin... 59c | <b>GROUND ROUND</b><br>Lean and Delicious... 69c | <b>ZWAN BACON</b><br>Canadian... 8-lb. tin... \$299 |
| <b>BLADE CUT</b><br>7-Bone Roast... 49c<br>Shoulder Roast... 59c<br>Round Bone... 59c | <b>CHUCK STEAK</b><br>USDA Choice... 49c<br>Center Cut... 79c | <b>GROUND BEEF</b><br>and Tenderloin... 39c | <b>ROLL SAUSAGE</b><br>Hormel Brand... 39c | <b>SLICED BACON</b><br>Pan Fry... 49c | <b>GROUND SHOULDER</b><br>and Tenderloin... 59c | <b>GROUND ROUND</b><br>Lean and Delicious... 69c | <b>ZWAN BACON</b><br>Canadian... 8-lb. tin... \$299 |



**CHUCK ROAST**  
BLADE CUT  
39c

BAKED GOODS  
DELICATESSEN  
SWEET CORN  
SWEET POTATOS  
SWEET PEAS  
SWEET SPINACH  
SWEET TOMATOES  
SWEET YAM BEANS  
SWEET ZUCCHINI

- |   |   |   |                                  |                                 |
|---|---|---|----------------------------------|---------------------------------|
| <b>ICE CREAM</b><br>Snow Sher... 49c<br>5 Flavors... 1/2-gal. 49c | <b>CAKE MIXES</b><br>Duncan Hines... 3 19-oz. \$1<br>9 Varieties... 19c | <b>GIANT TIDE</b><br>Delegent... 46-oz. 67c<br>Scot Deal... 67c | <b>SCOT TISSUE</b><br>9 Reg. 99c | <b>HAIR SPRAY</b><br>13-oz. 59c |
|---|---|---|----------------------------------|---------------------------------|

DEL MONTE  
Pineapple  
Pineapple-Grapefruit  
Prune Juice  
Tomato Juice  
Tomatoes  
Zucchini  
Pickles











